

POST-CONSTRUCTION BMPs

INSPECTION & MAINTENANCE

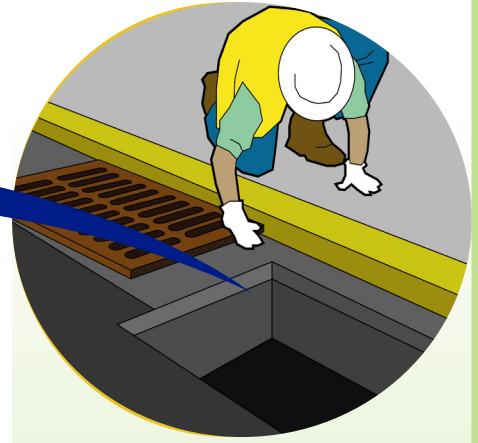
Property owners are responsible for maintaining their storm water Post-Construction Best Management Practices (BMPs). Property owners with drain connection licenses or a Storm Water Quality Report should have an Operations & Maintenance (O&M) Plan with inspection and maintenance requirements.

WHAT KINDS OF POST-CONSTRUCTION BMPs REQUIRE MAINTENANCE?

All BMPs will need some degree of maintenance to treat storm water runoff and reduce water quality impacts. Recommended maintenance may be different for each device. Schedule inspections and maintenance at regular intervals and after major rain events.

WHAT ARE THE INSPECTION AND MAINTENANCE REQUIREMENTS?

The City requires quarterly inspections and annual maintenance of Post-Construction BMPs. These actions should be tracked in the O&M Inspection and Maintenance Forms and logged for review by City inspectors.



**CITY FINES FOR
UNAUTHORIZED DISCHARGES
CAN BE UP TO \$25,000
PER VIOLATION, PER DAY.**

O&M Inspection and Maintenance Forms

These forms are found in your permanent storm water BMP O&M Plan (Appendix H on the Department of Planning and Permitting website:

[HonoluluDPP.org/
ApplicationsForms/
StormWaterQuality.aspx](http://HonoluluDPP.org/ApplicationsForms/StormWaterQuality.aspx))

O&M Service Specialists

A list of Post-Construction BMP service providers is available at [Honolulu.gov/rep/site/dfmswq/
Post-ConstBMP_OMflyer_rev1.
pdf](http://Honolulu.gov/rep/site/dfmswq/Post-ConstBMP_OMflyer_rev1.pdf).



Manufactured Treatment Devices



Catch Basin Inserts



Grass Swales



Permeable Pavement

