

# PAINTING

## INTERIOR & EXTERIOR SURFACES

Prevent painting projects from impacting storm water by following procedures for preparation and handling of paint and chemicals and using proper disposal methods.

### SURFACE PREPARATION & PAINT REMOVAL

- Remove loose paint using methods such as sandblasting, wet scraping, or a heat gun, scraper and sandpaper with a drop cloth. Sweep or vacuum paint chips and dust. Do not wash loose paint down with water.
- Do not pressure wash to remove paint.
- Avoid working in windy conditions when stripping or cleaning building exteriors, or ensure the area is sheltered.
- Install inlet protection or block nearby storm drain inlets with geotextile fabric to prevent particulate matter from entering.

### PAINTING & SPILL PREPARATION



Mix paint indoors or in a contained area using a drop cloth underneath.



Ensure all painters are familiar with spill containment and clean up procedures and make spill kits and absorbents easily accessible.



PAINTING

**Storm drain water flows untreated into our streams and ocean.**

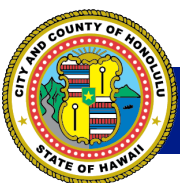
**Water that is discolored or has been in contact with chemicals, dust, or other residue resulting from painting activities may NOT enter the street or storm drain.**

R.O.H. 43-11.23

---

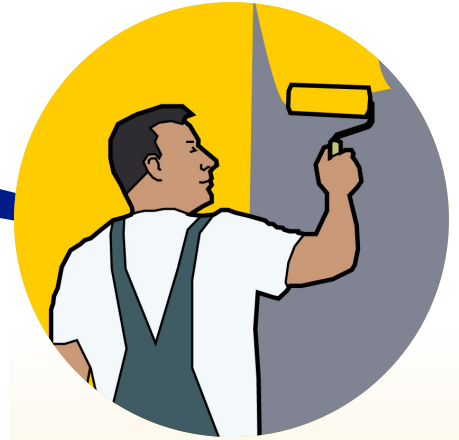
**CITY FINES FOR UNAUTHORIZED DISCHARGES CAN BE UP TO \$25,000 PER VIOLATION, PER DAY.**

---



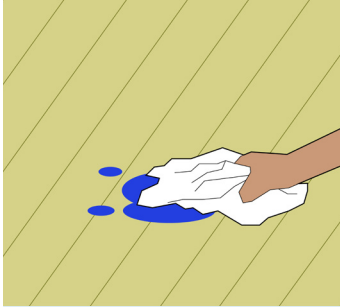
# PAINTING

INTERIOR & EXTERIOR SURFACES

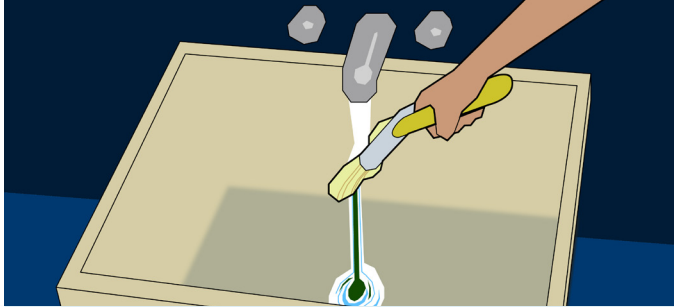


PAINTING

## CLEAN UP AND DISPOSAL



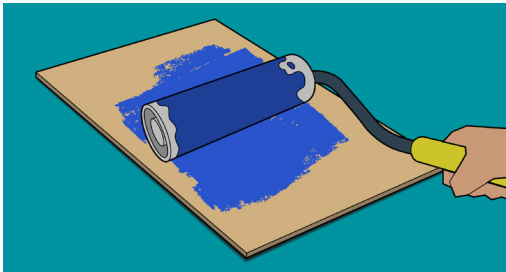
Clean up spills immediately.



Wash latex paint brushes and pans into a sink that is plumbed to the sanitary sewer system.

## HANDLING EXCESS OIL-BASED PAINTS, STAINS AND SOLVENTS

### Oil-Based Paints and Stains



#### Recycle

Use a wire paint comb to squeeze the residual back into the can to be recycled for future projects.

#### Absorb and Dispose

Paint out the excess or absorb using materials such as shredded paper, sawdust, or an oil change box. Seal in a plastic bag before disposing in the regular trash.

### Solvents



#### Recycle

Pour used solvent into a glass or metal container and let solids separate out. Skim off residue and dispose of in the trash. Save the remaining solvent for your next project.

#### Dispose

Paint thinner and paint stripper **MUST** be treated as hazardous waste and require special handling.<sup>†</sup>

**DO NOT WASH OIL-BASED PAINTS, STAINS AND SOLVENTS DOWN THE SINK.**

**Never clean or rinse paint brushes or containers, or dump rinse water, into the street or storm drain.**

**Use sinks connected to the sanitary sewer.**

### † HAZARDOUS WASTE DISPOSAL

Visit the City and County of Honolulu Environmental Services (ENV) Household Hazardous Waste website at [Honolulu.gov/Opala](http://Honolulu.gov/Opala) for more tips on handling paint and other hazardous substances.

