

OFFICE OF THE CITY AUDITOR
CITY AND COUNTY OF HONOLULU

1001 KAMOKILA BOULEVARD, SUITE 216, KAPOLEI, HAWAII 96707 / PHONE: (808) 768-3134 / FAX: (808) 768-3135

EDWIN S.W. YOUNG
CITY AUDITOR

December 21, 2011

Mr. David K. Tanoue, Director
Department of Planning and Permitting
City and County of Honolulu
650 South King Street, 7th Floor
Honolulu, Hawai'i 96813

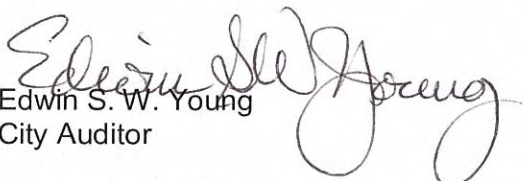
Dear Mr. Tanoue,

As part of our fieldwork for the *Audit of the Span of Control of Selected Departments of the City and County of Honolulu*, we created detailed organizational charts for each department in our sample. Attached is a copy of the organizational chart that we have produced for your department.

Administrative Directive No. 96 requires that all departments and agencies submit updated organizational and functional charts through the Department of Budget and Fiscal Services to the managing director by the first working day after July 1 of each year. We hope your department can use this organization chart to fulfill this requirement.

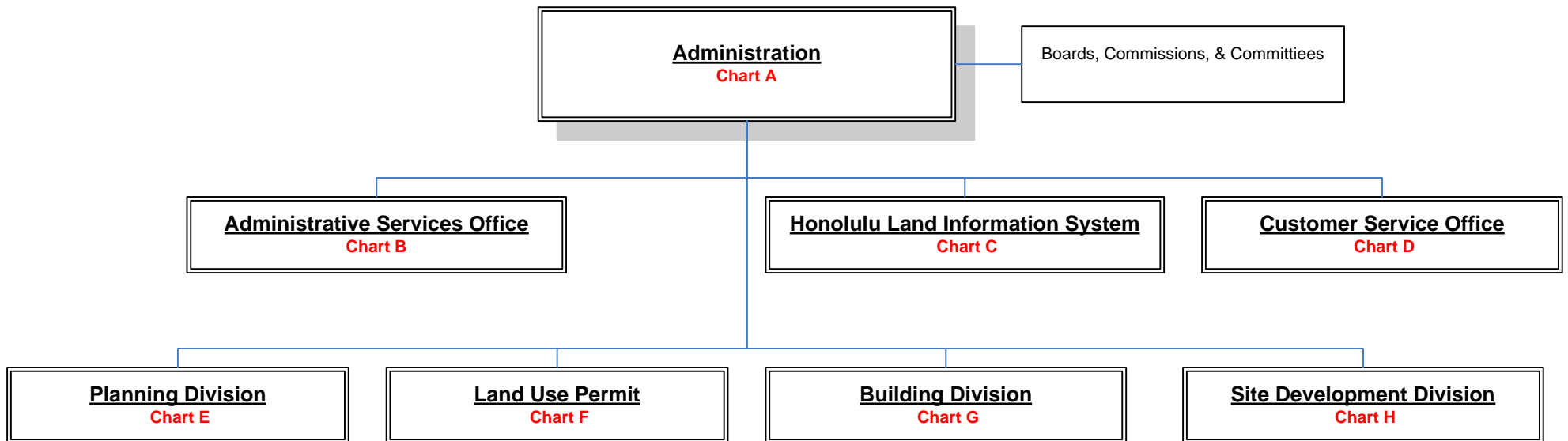
If you have any questions or concerns, please do not hesitate to contact me at 768-3130.

Sincerely,

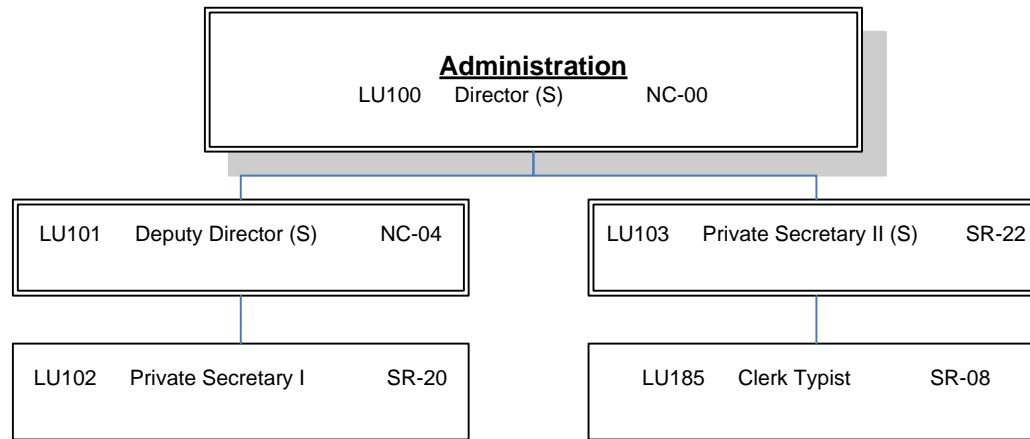

Edwin S. W. Young
City Auditor

c: Doug Chin, Managing Director

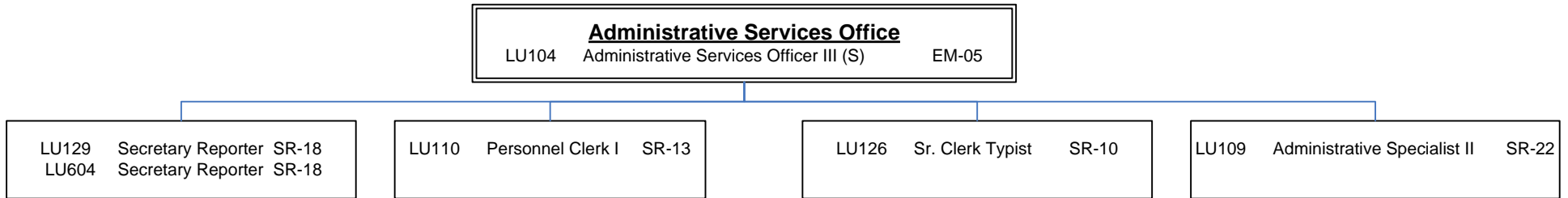
City & County of Honolulu
Department of Planning & Permitting
Organization Chart



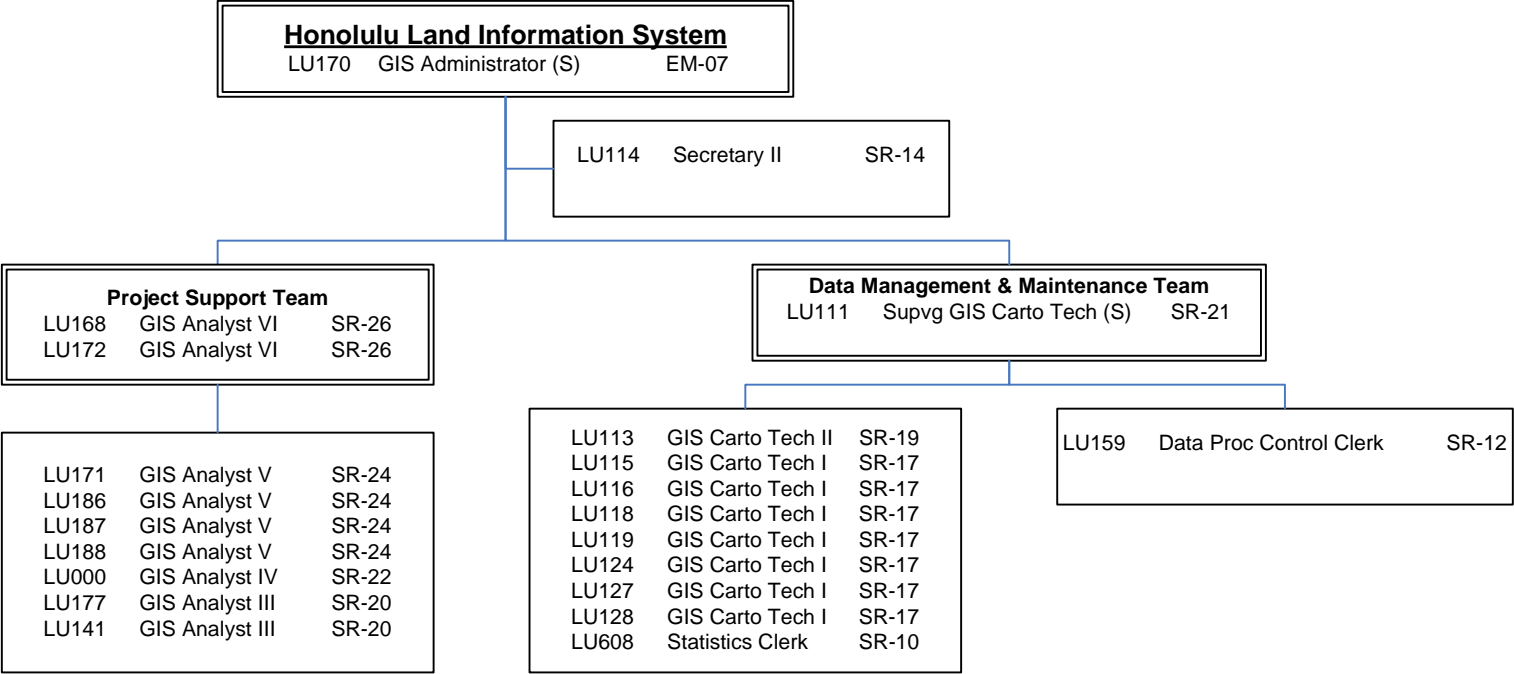
City & County of Honolulu
Department of Planning & Permitting
Organization Chart
Chart A: Administration



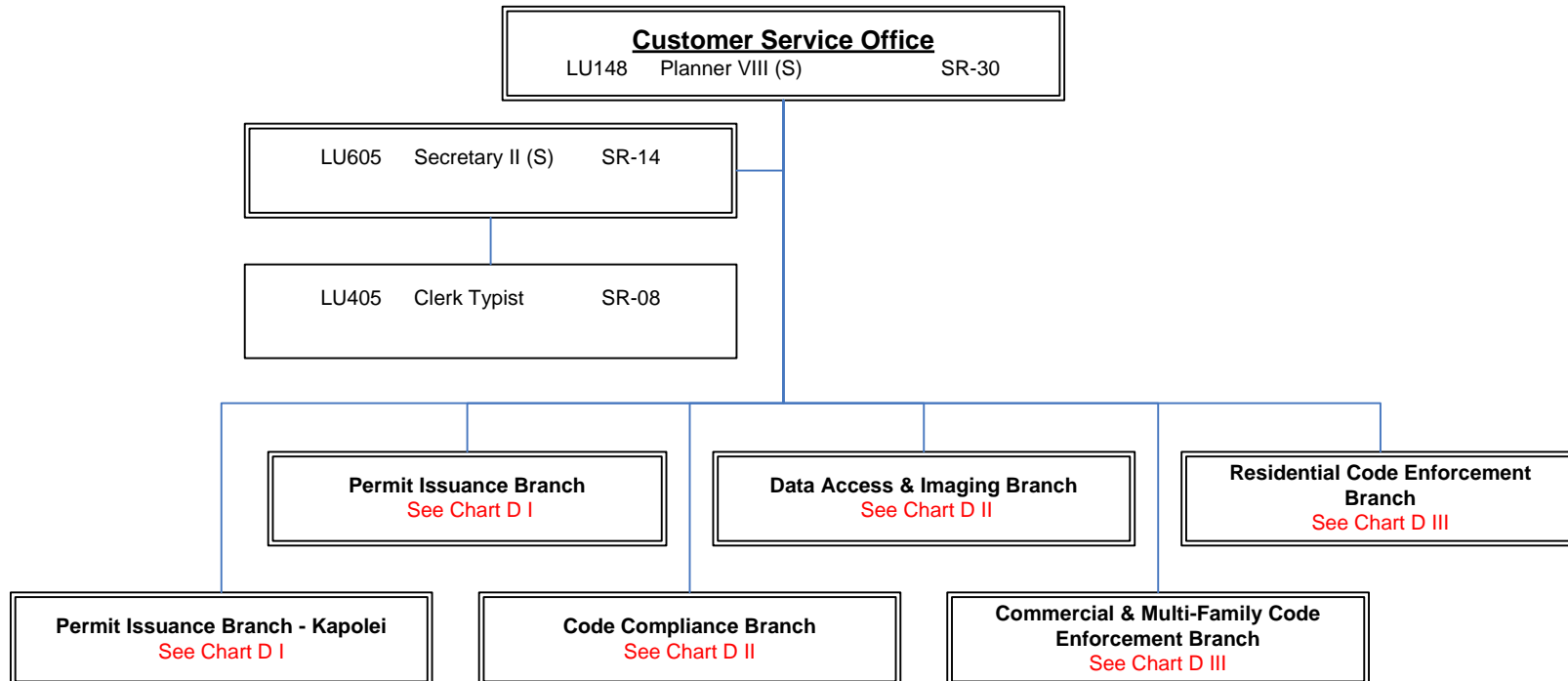
City & County of Honolulu
Department of Planning & Permitting
Organization Chart
Chart B: Administrative Services Office



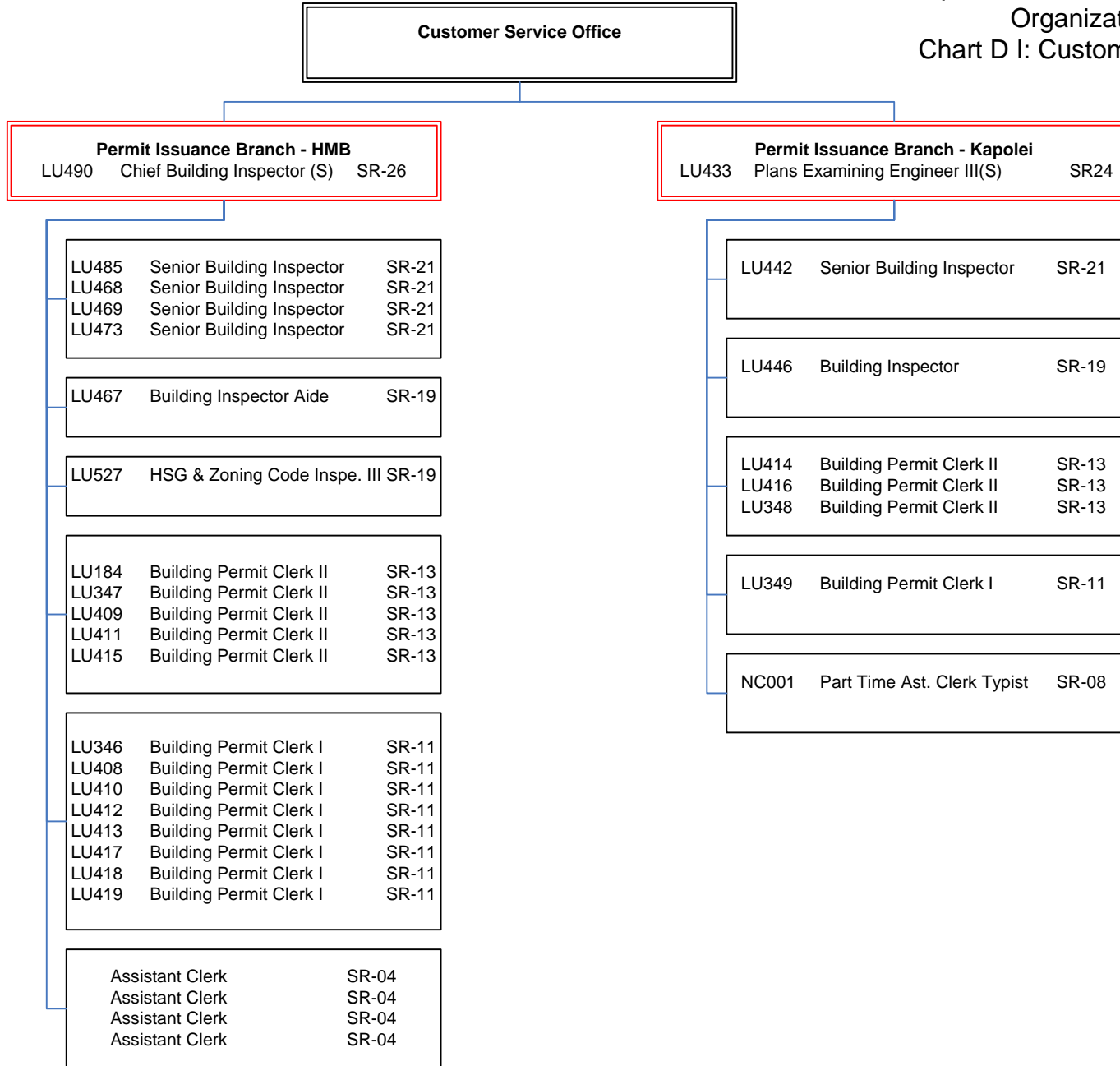
City & County of Honolulu
 Department of Planning & Permitting
 Organization Chart
 Chart C: Honolulu Land Information System



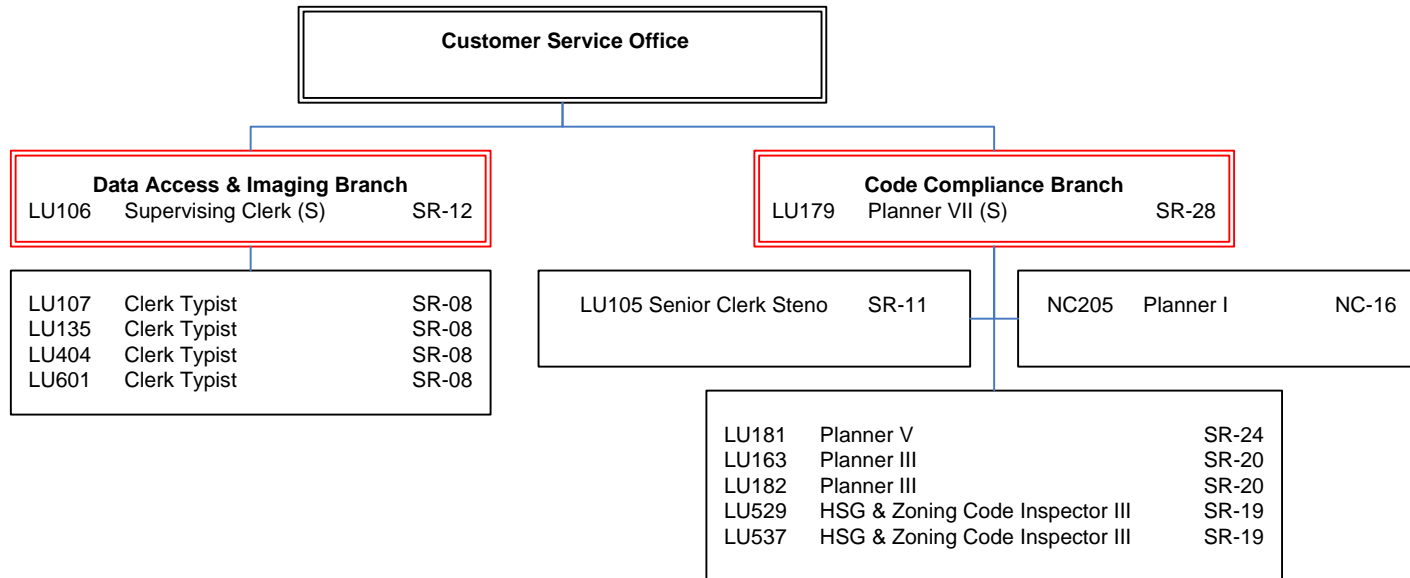
City & County of Honolulu
Department of Planning & Permitting
Organization Chart
Chart D: Customer Service Office



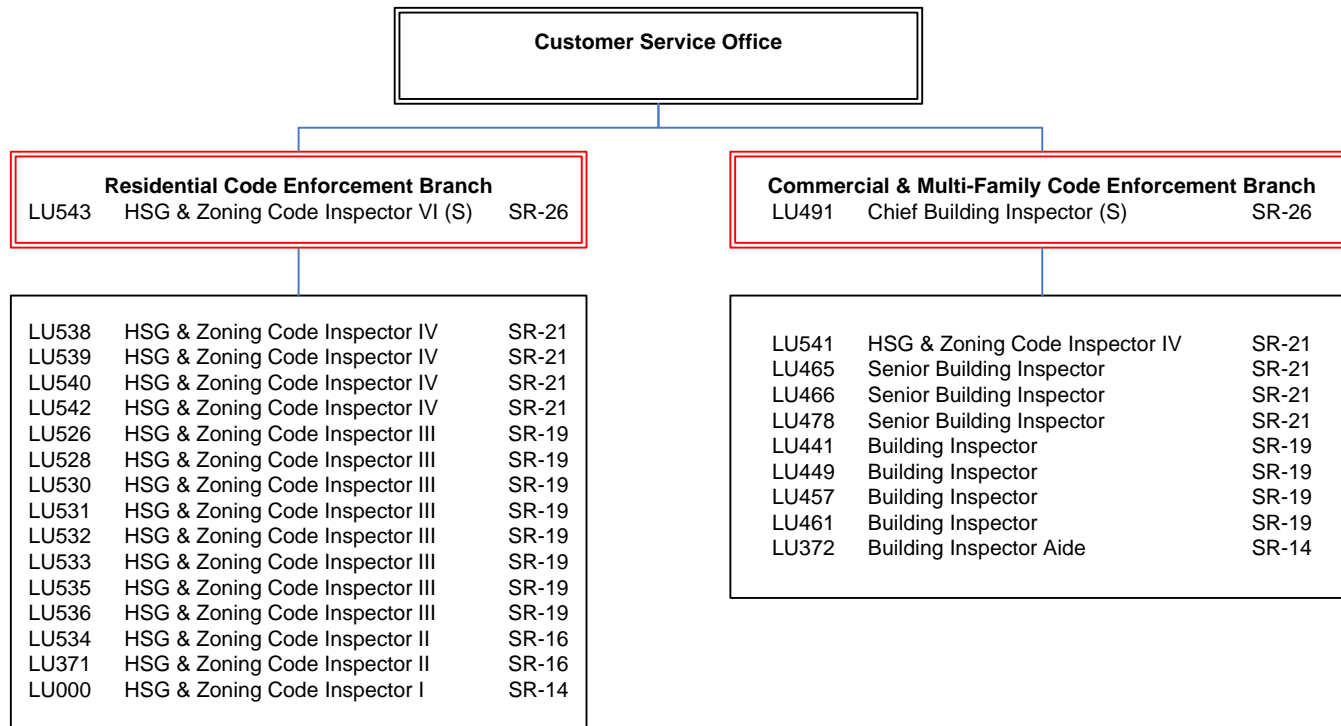
City & County of Honolulu
 Department of Planning & Permitting
 Organization Chart
 Chart D I: Customer Service Office



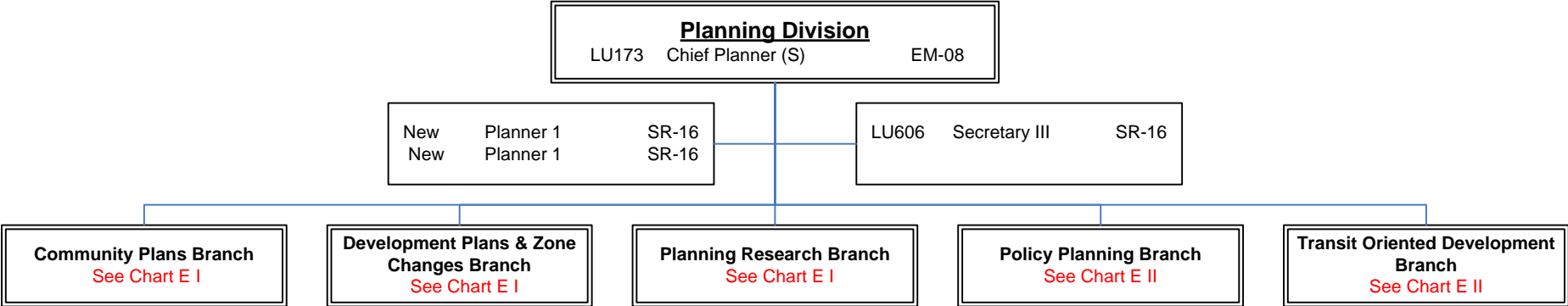
City & County of Honolulu
 Department of Planning & Permitting
 Organization Chart
 Chart D II: Customer Service Office



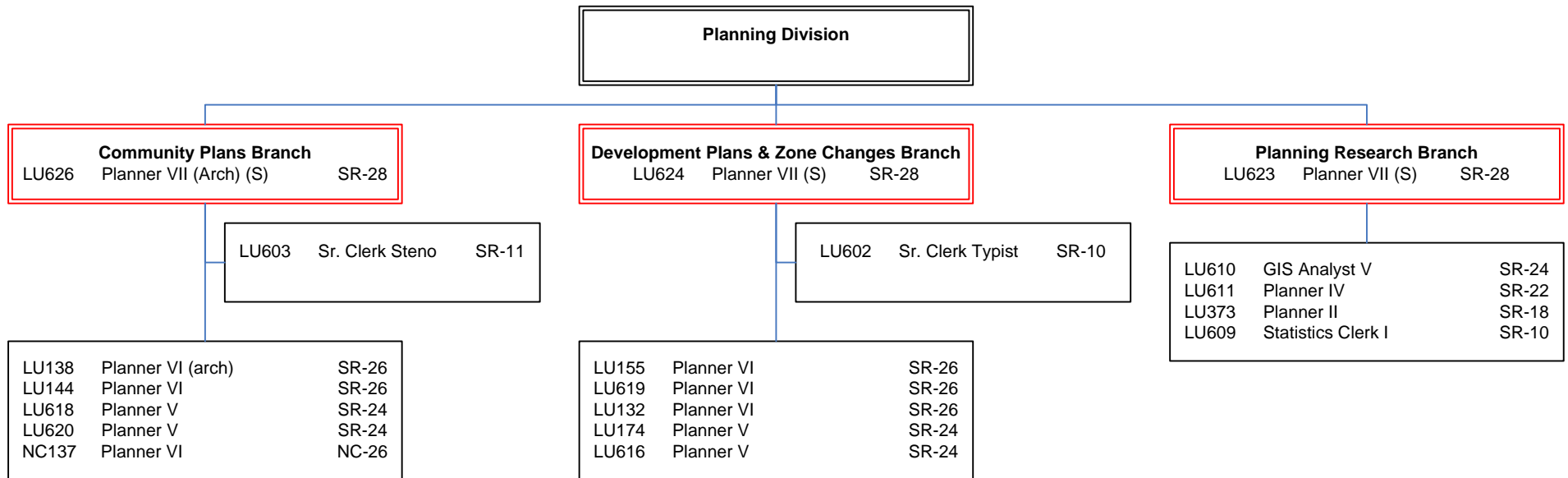
City & County of Honolulu
 Department of Planning & Permitting
 Organization Chart
 Chart D III: Customer Service Office



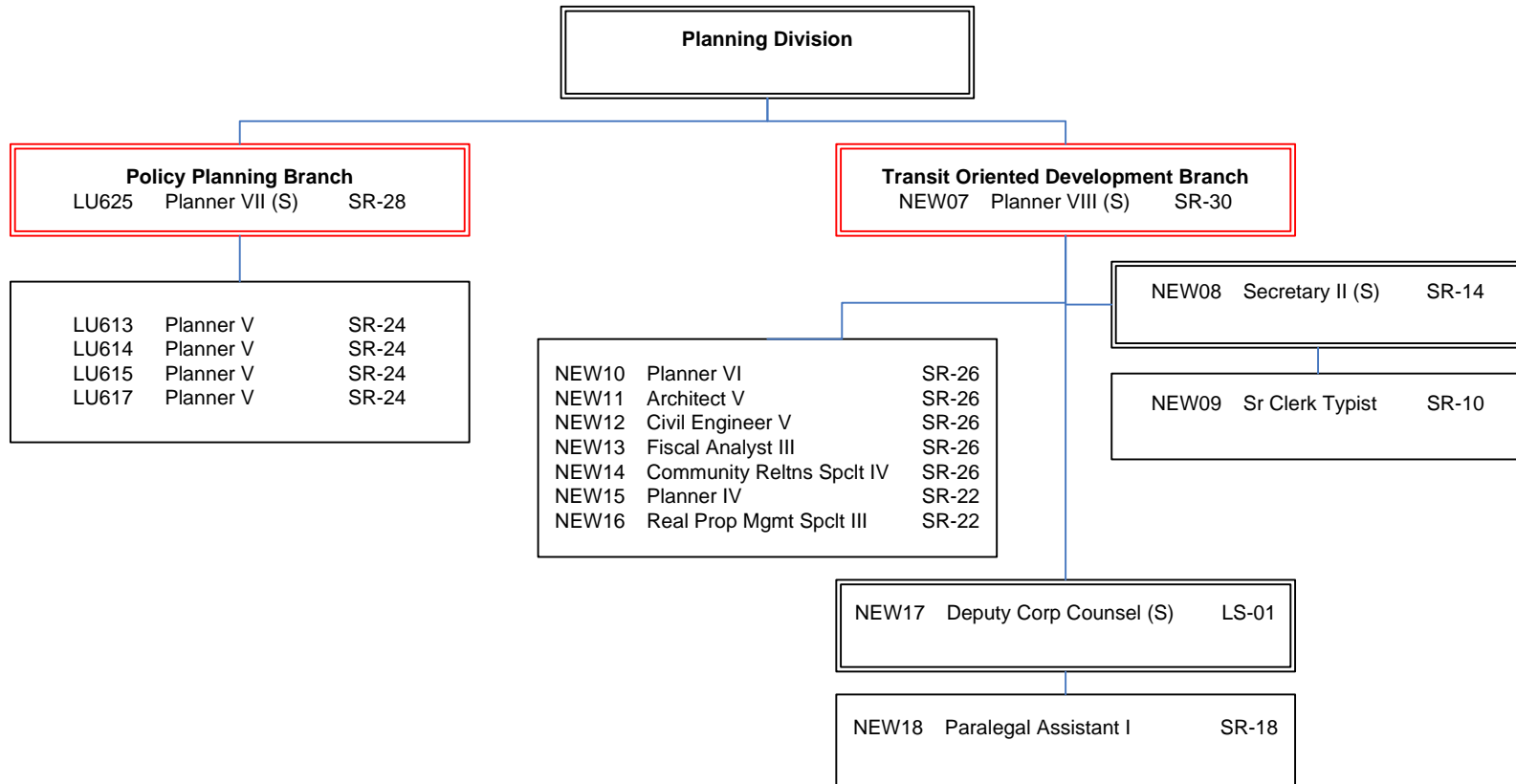
City & County of Honolulu
Department of Planning & Permitting
Organization Chart
Chart E: Planning Division



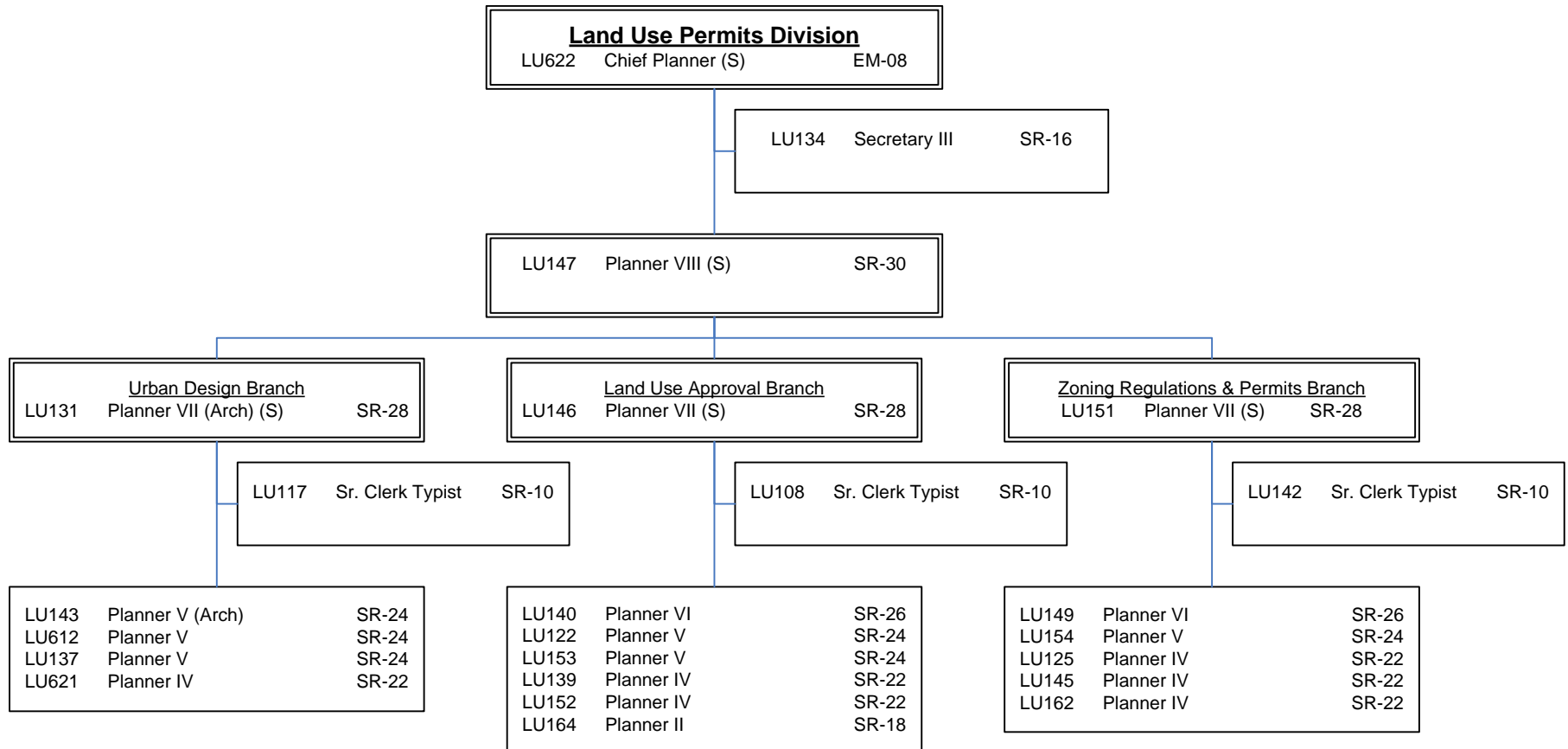
City & County of Honolulu
 Department of Planning & Permitting
 Organization Chart
 Chart E I: Planning Division



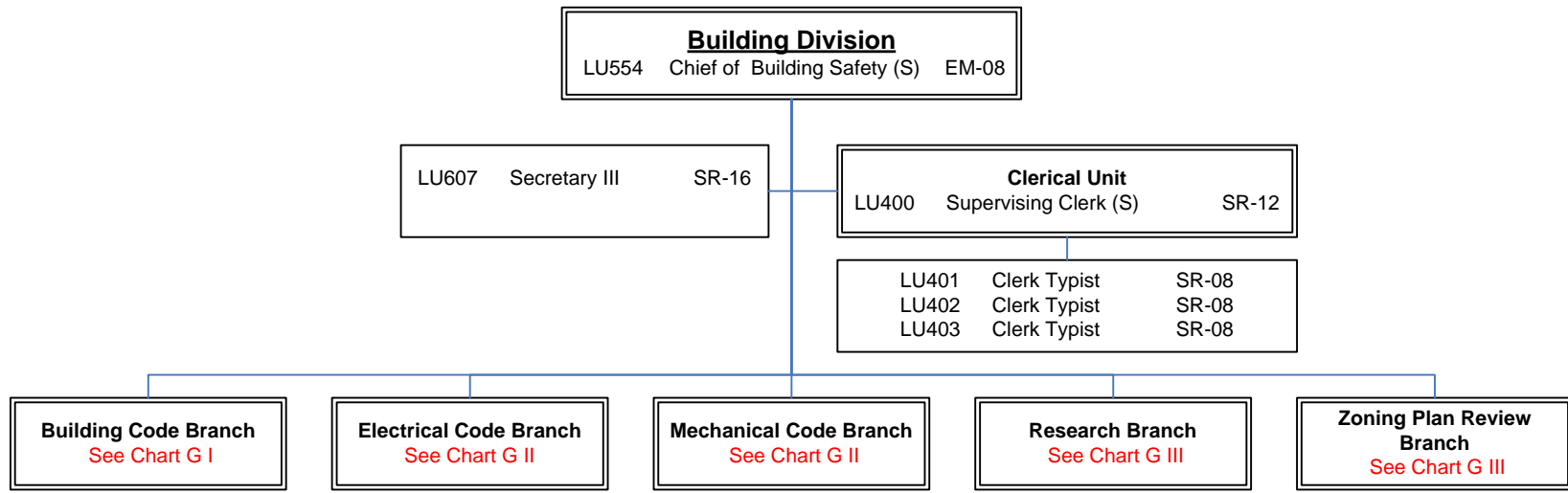
City & County of Honolulu
 Department of Planning & Permitting
 Organization Chart
 Chart E II: Planning Division



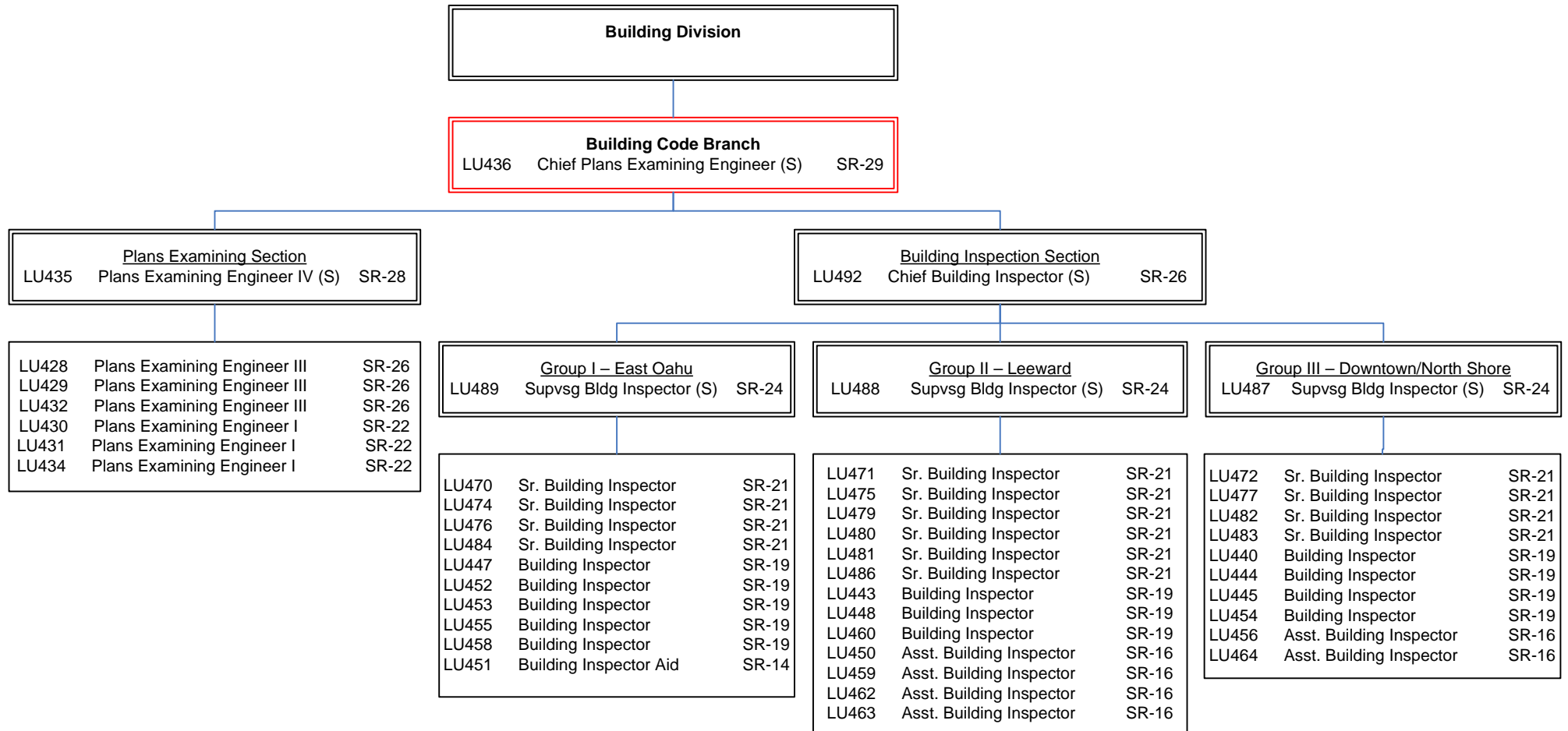
City & County of Honolulu
 Department of Planning & Permitting
 Organization Chart
 Chart F: Land Use Permits Division



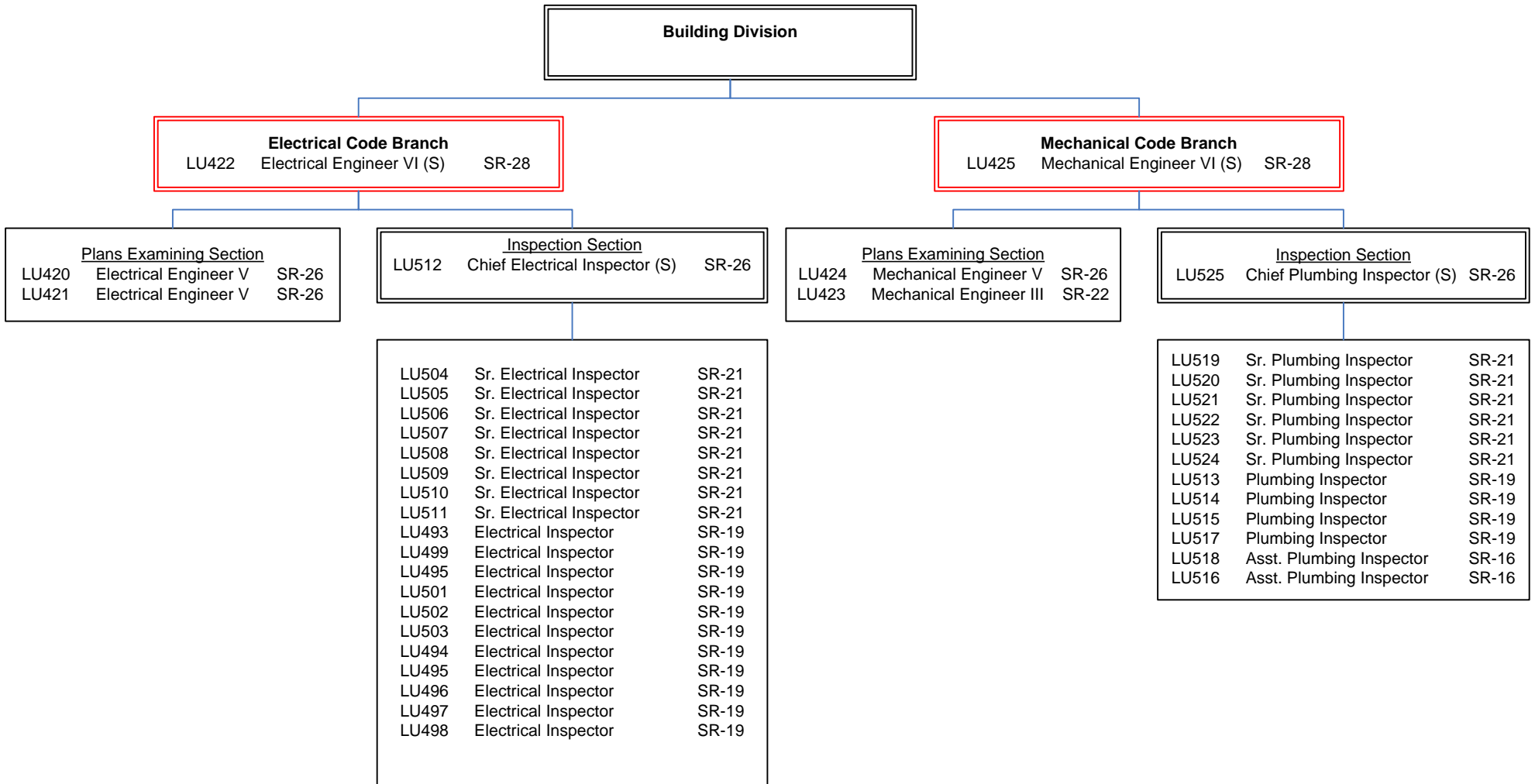
City & County of Honolulu
Department of Planning & Permitting
Organization Chart
Chart G: Building Division



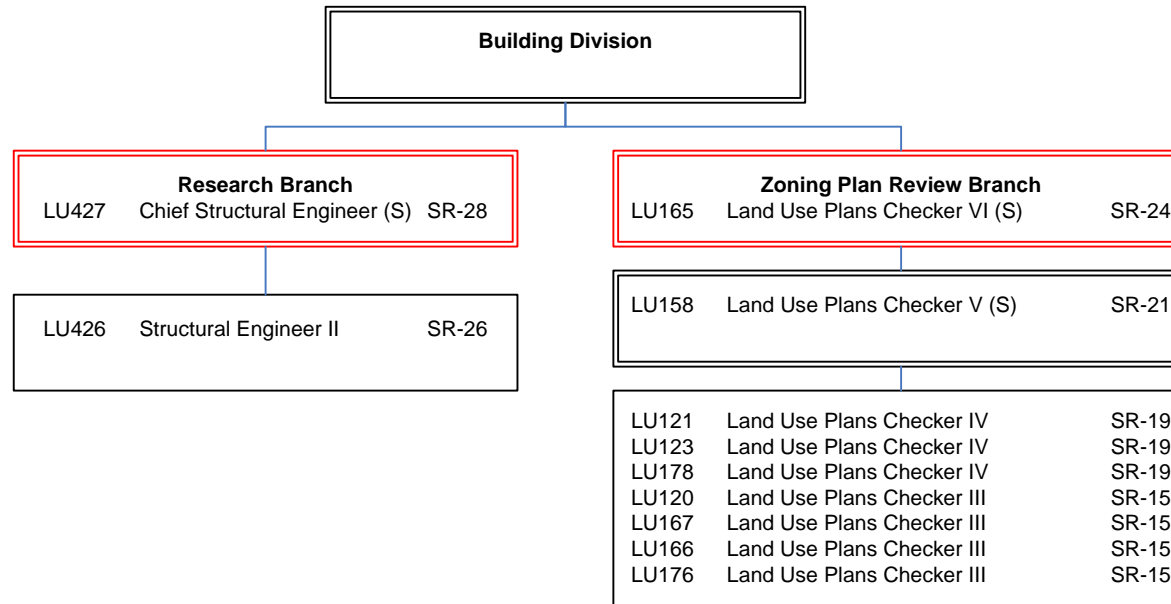
City & County of Honolulu
 Department of Planning & Permitting
 Organization Chart
 Chart G I: Building Division



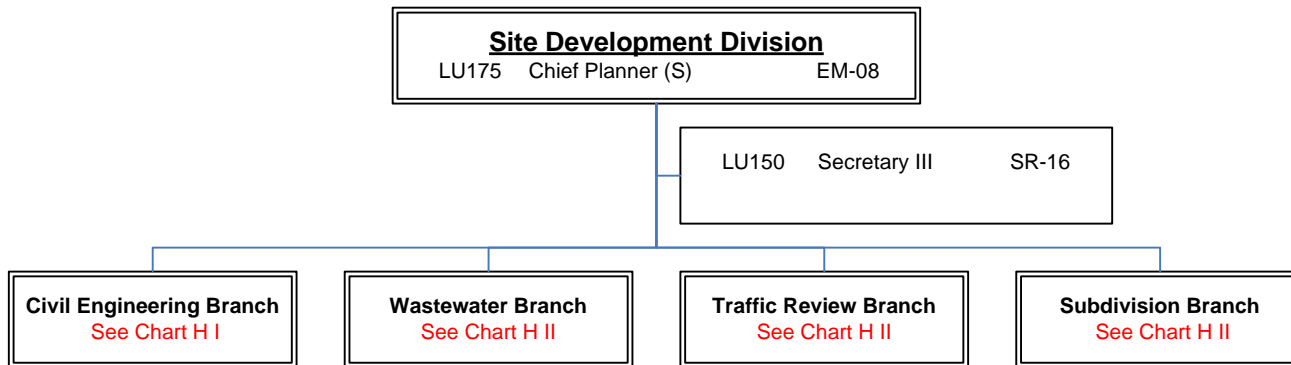
City & County of Honolulu
 Department of Planning & Permitting
 Organization Chart
 Chart G II: Building Division



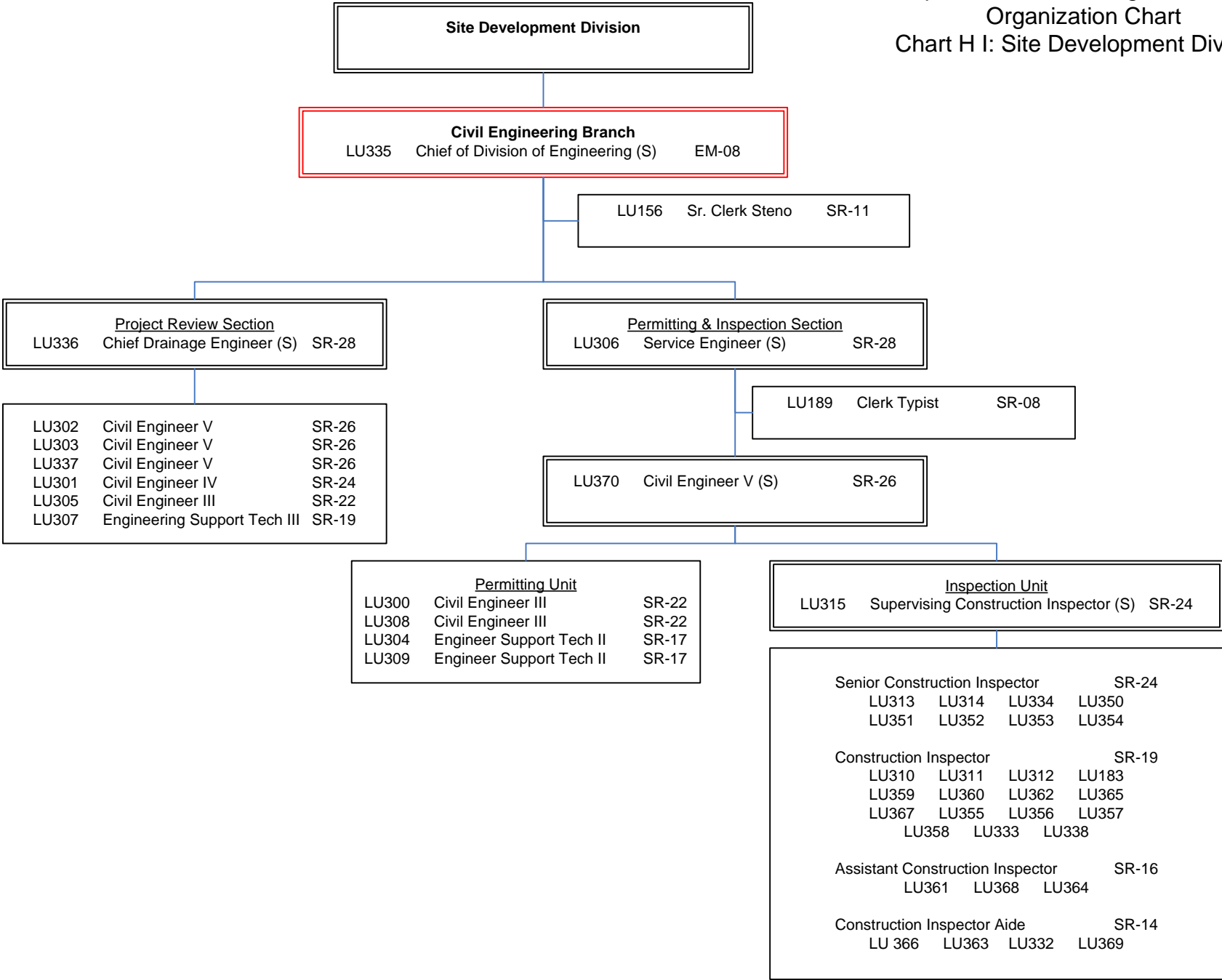
City & County of Honolulu
 Department of Planning & Permitting
 Organization Chart
 Chart G III: Building Division



City & County of Honolulu
Department of Planning & Permitting
Organization Chart
Chart H: Site Development Division



City & County of Honolulu
 Department of Planning & Permitting
 Organization Chart
 Chart H I: Site Development Division



City & County of Honolulu
 Department of Planning & Permitting
 Organization Chart
 Chart H II: Site Development Division

