

OFFICE OF THE CITY AUDITOR
CITY AND COUNTY OF HONOLULU

1001 KAMOKILA BOULEVARD, SUITE 216, KAPOLEI, HAWAII 96707 / PHONE: (808) 768-3134 / FAX: (808) 768-3135

EDWIN S.W. YOUNG
CITY AUDITOR

December 21, 2011

Mr. George Keoki Miyamoto, Director
Department of Enterprise Services
City and County of Honolulu
777 Ward Avenue
Honolulu, Hawai'i 96814

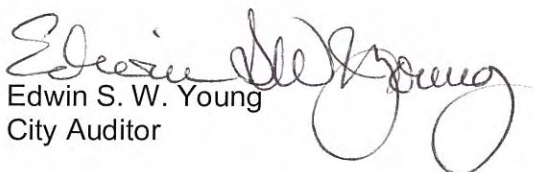
Dear Mr. Miyamoto,

As part of our fieldwork for the *Audit of the Span of Control of Selected Departments of the City and County of Honolulu*, we created detailed organizational charts for each department in our sample. Attached is a copy of the organizational chart that we have produced for your department.

Administrative Directive No. 96 requires that all departments and agencies submit updated organizational and functional charts through the Department of Budget and Fiscal Services to the managing director by the first working day after July 1 of each year. We hope your department can use this organization chart to fulfill this requirement.

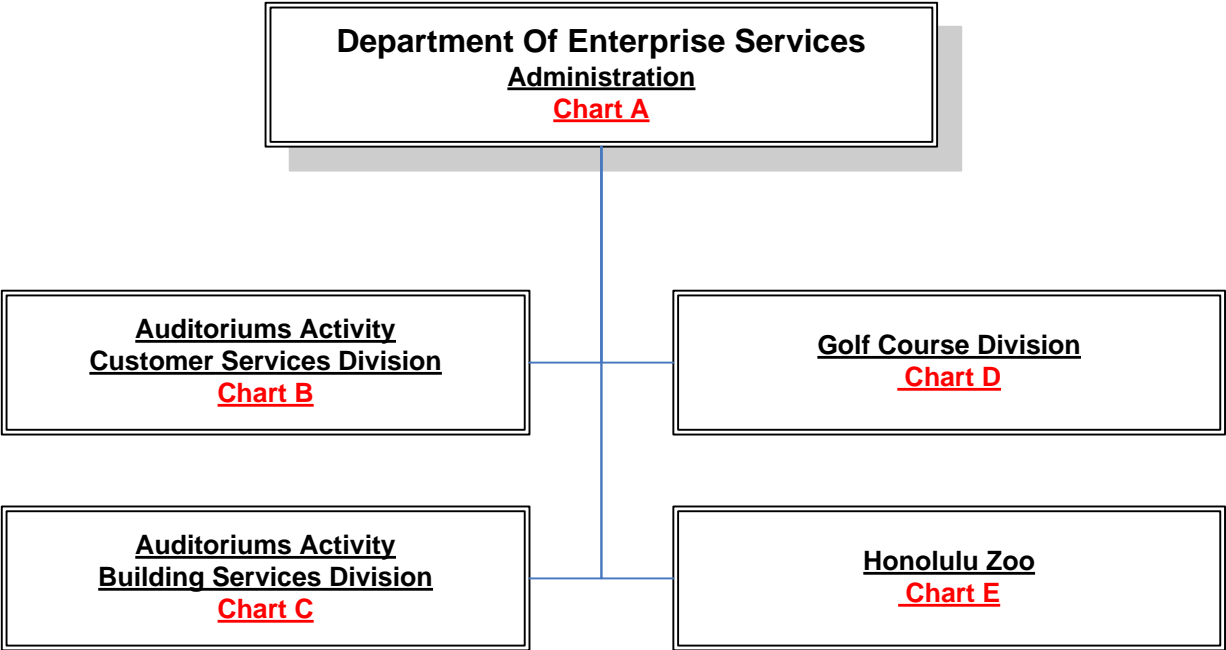
If you have any questions or concerns, please do not hesitate to contact me at 768-3130.

Sincerely,

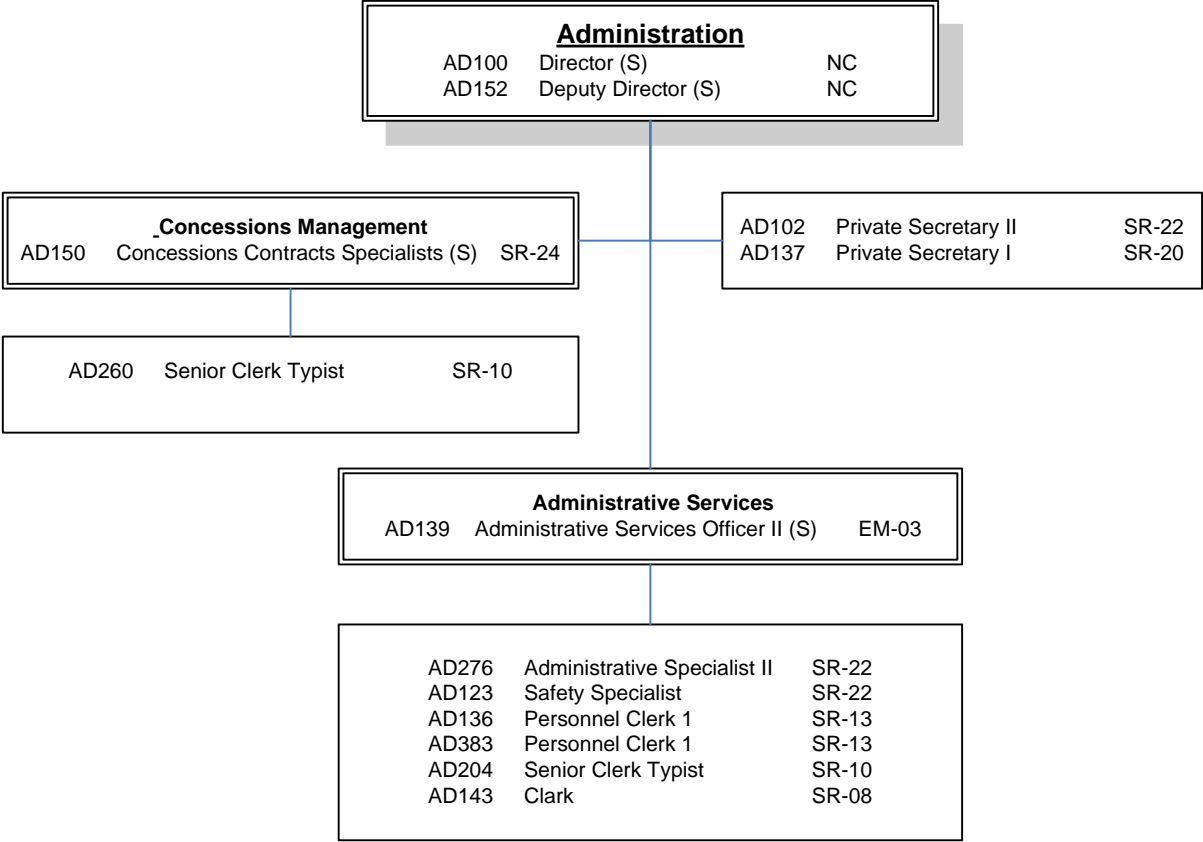

Edwin S. W. Young
City Auditor

c: Doug Chin, Managing Director

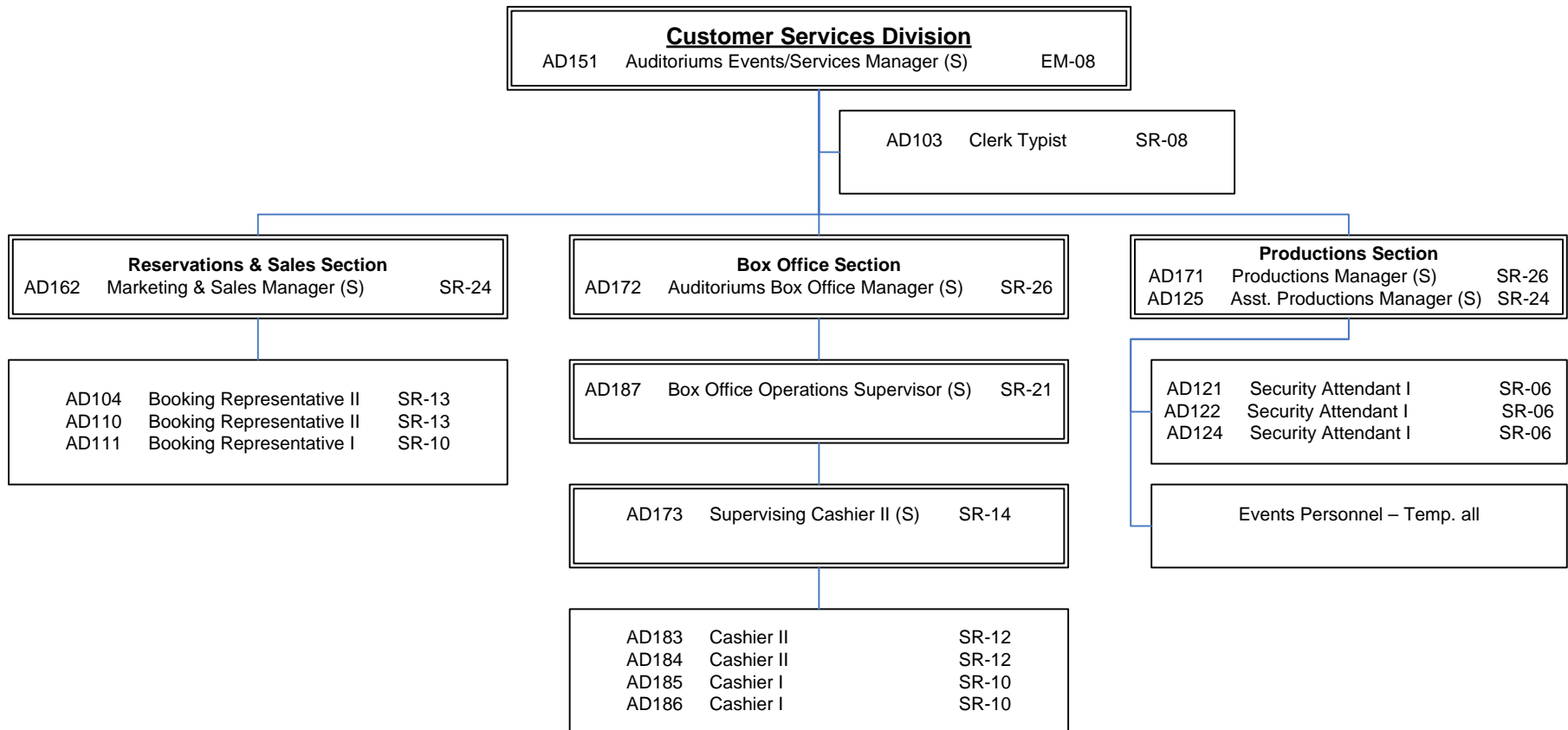
City & County of Honolulu
Department of Enterprise Services
Organization Chart



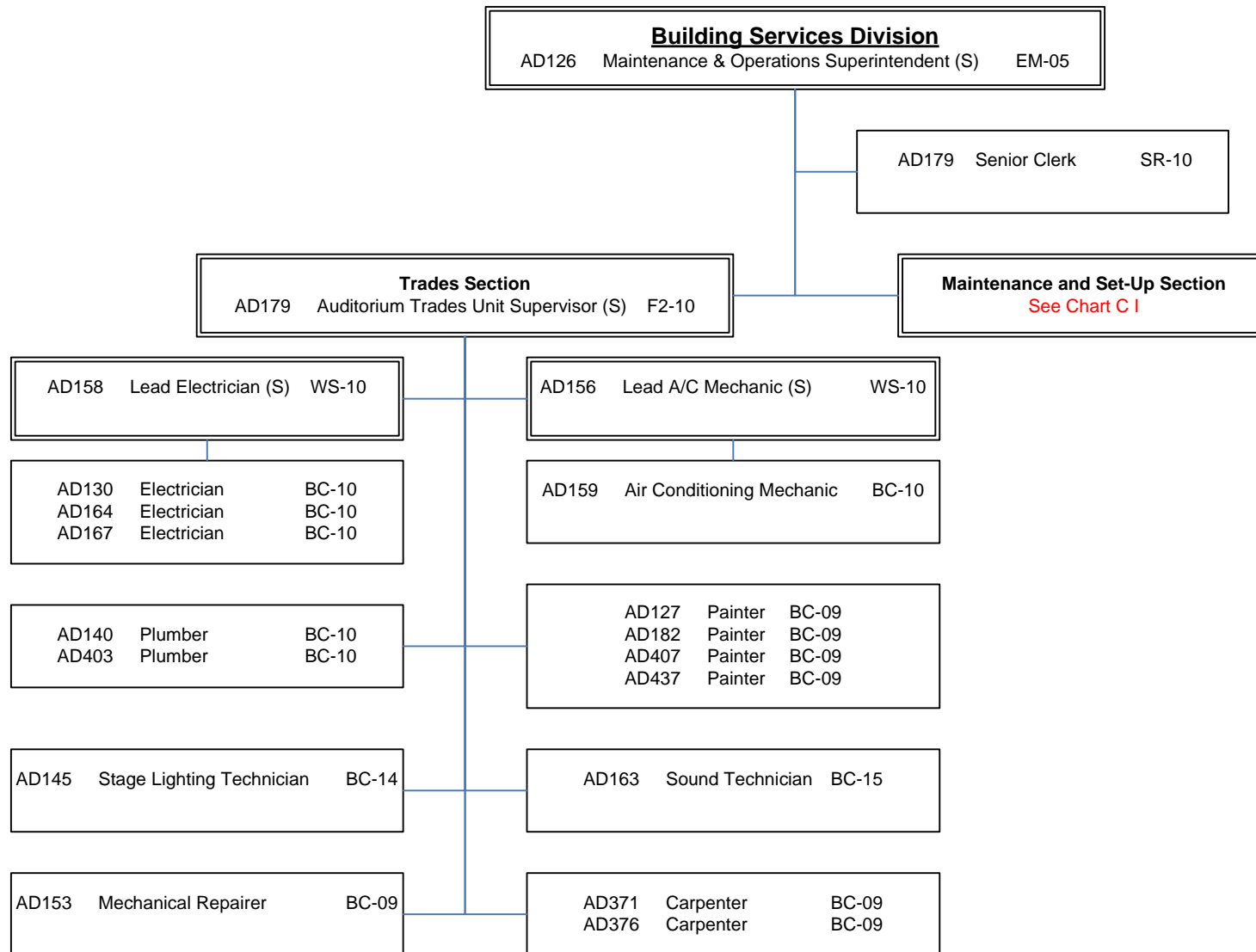
City & County of Honolulu
 Department of Enterprise Services
 Chart A: Administration
 Organization Chart



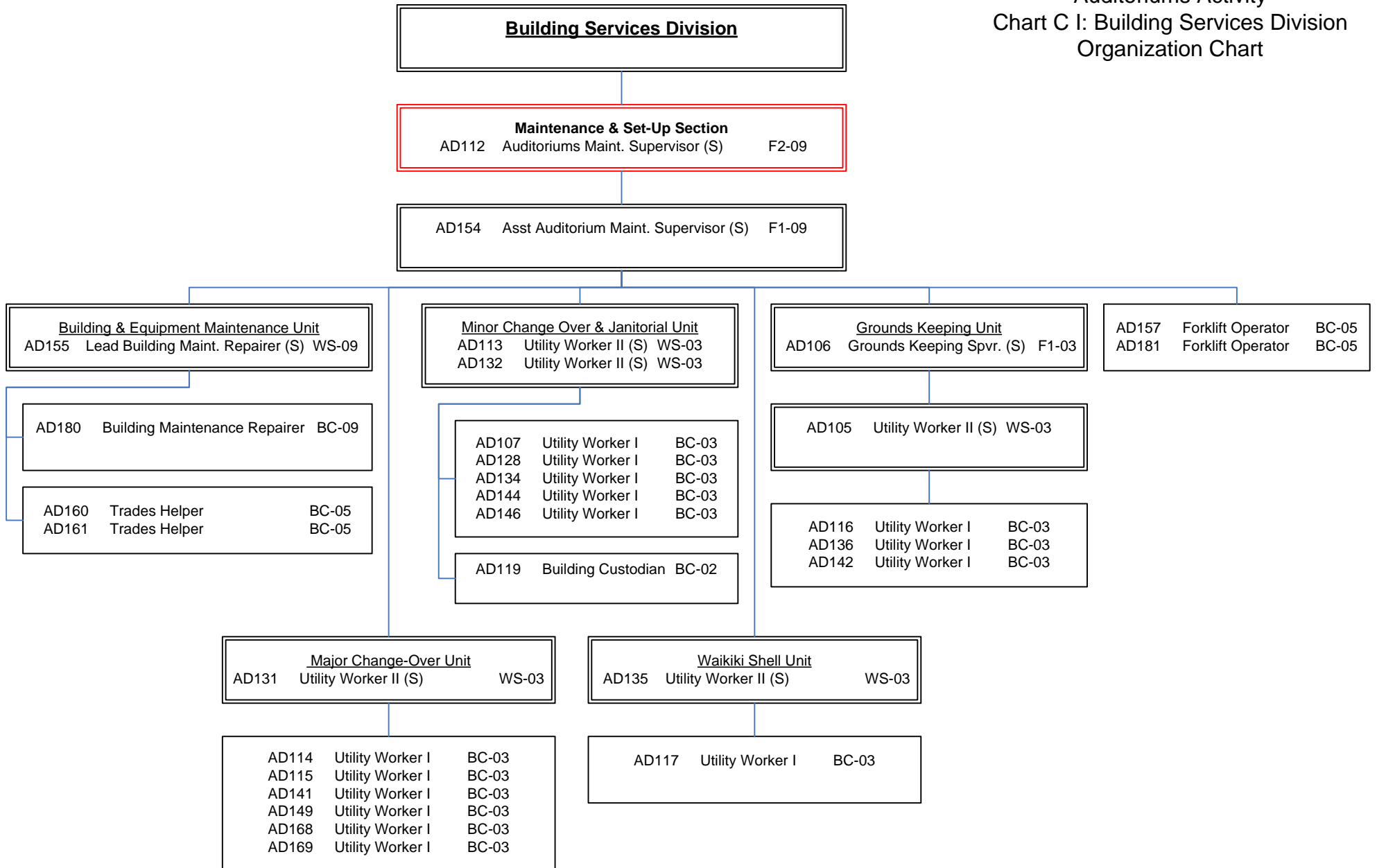
City & County of Honolulu
 Department of Enterprise Services
 Auditoriums Activity
 Chart B: Customer Services Division
 Organization Chart



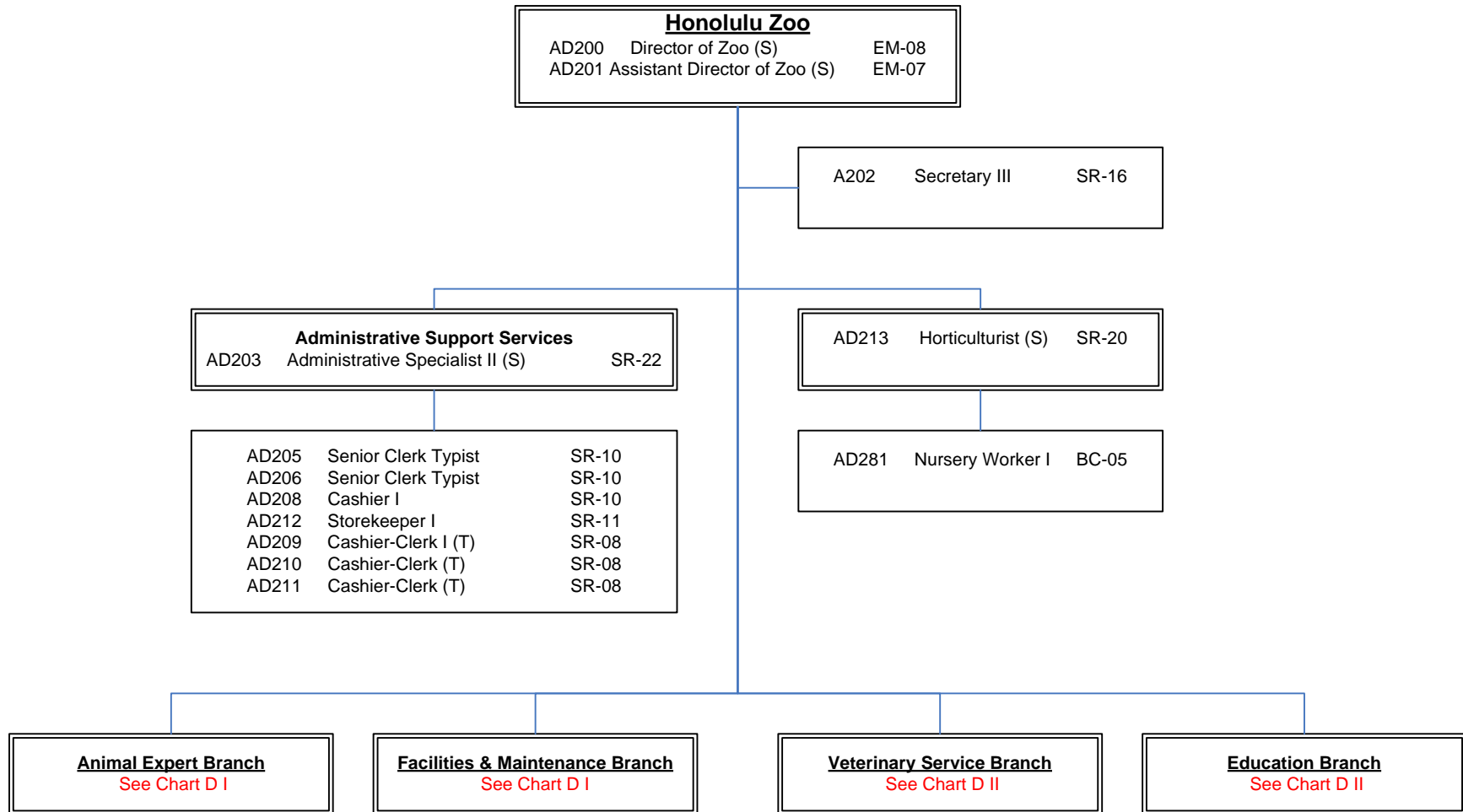
City & County of Honolulu
 Department of Enterprise Services
 Auditoriums Activity
 Chart C: Building Services Division
 Organization Chart



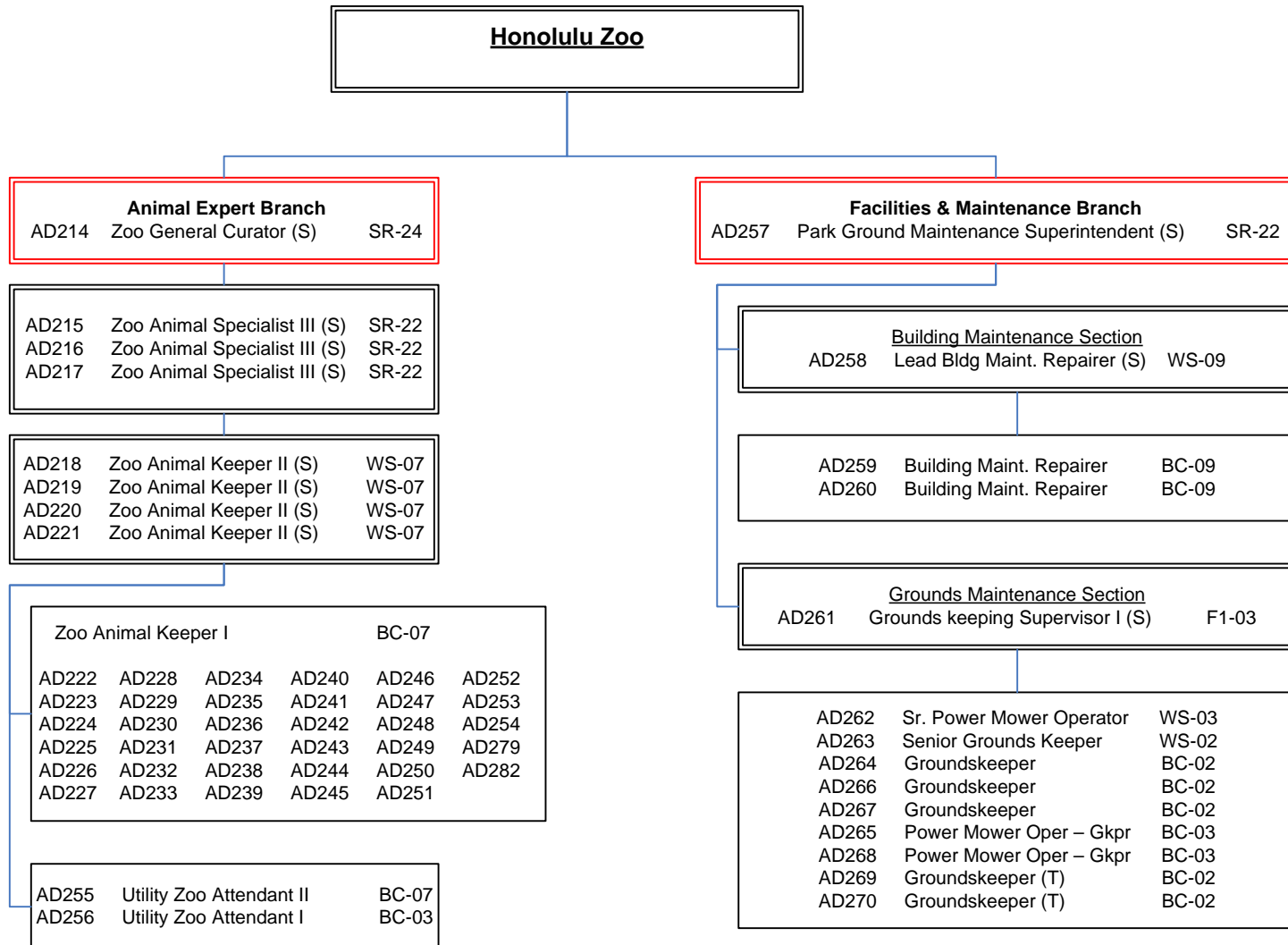
City & County of Honolulu
 Department of Enterprise Services
 Auditoriums Activity
 Chart C I: Building Services Division
 Organization Chart



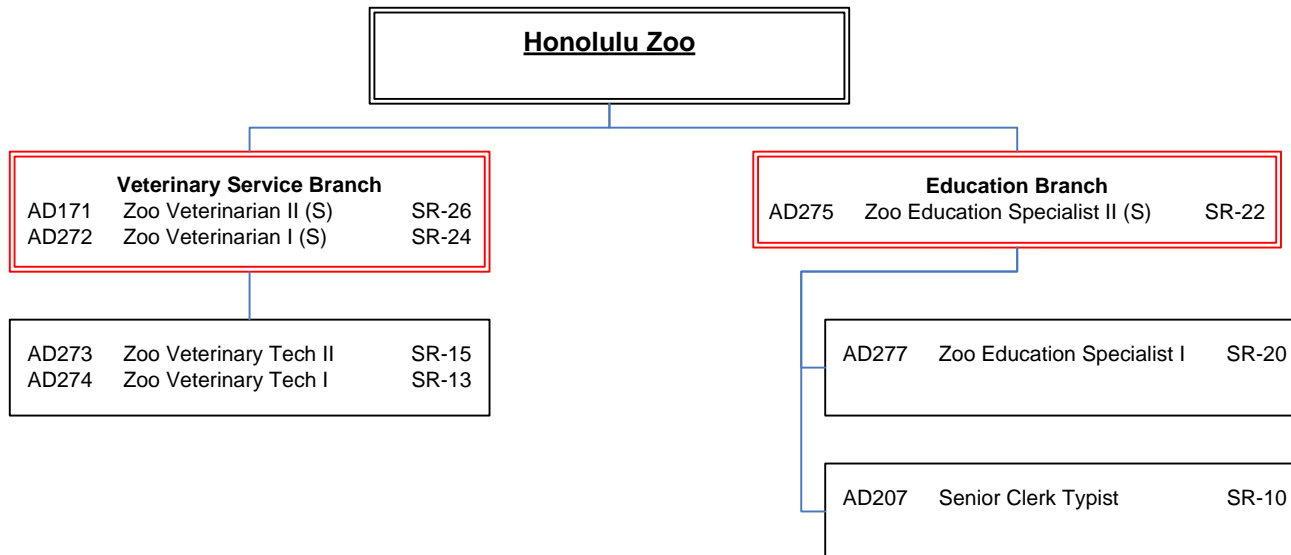
City & County of Honolulu
 Department of Enterprise Services
 Chart D: Honolulu Zoo
 Organization Chart



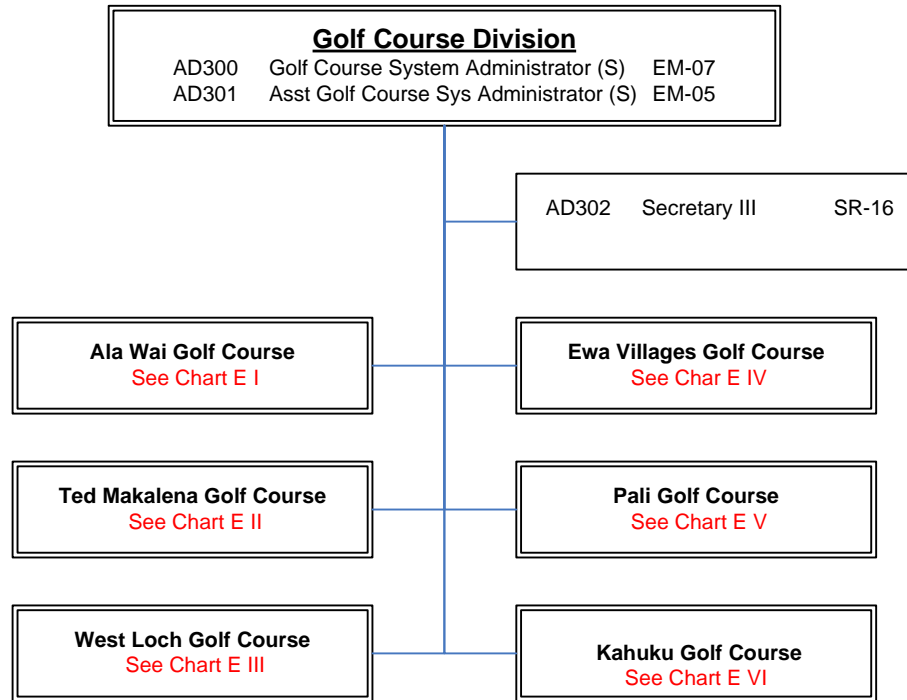
City & County of Honolulu
 Department of Enterprise Services
 Chart D I: Honolulu Zoo
 Organization Chart



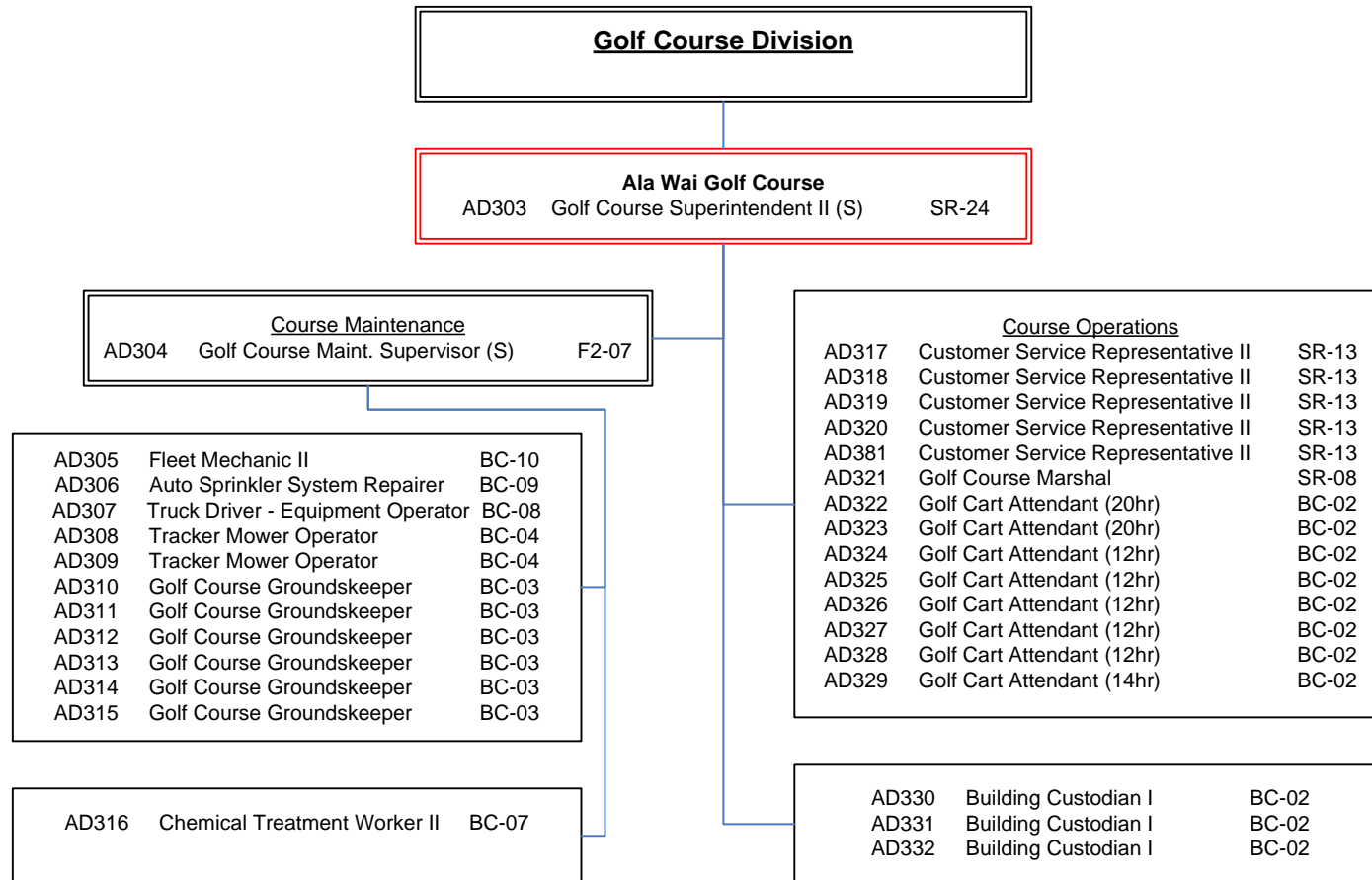
City & County of Honolulu
Department of Enterprise Services
Chart D II: Honolulu Zoo
Organization Chart



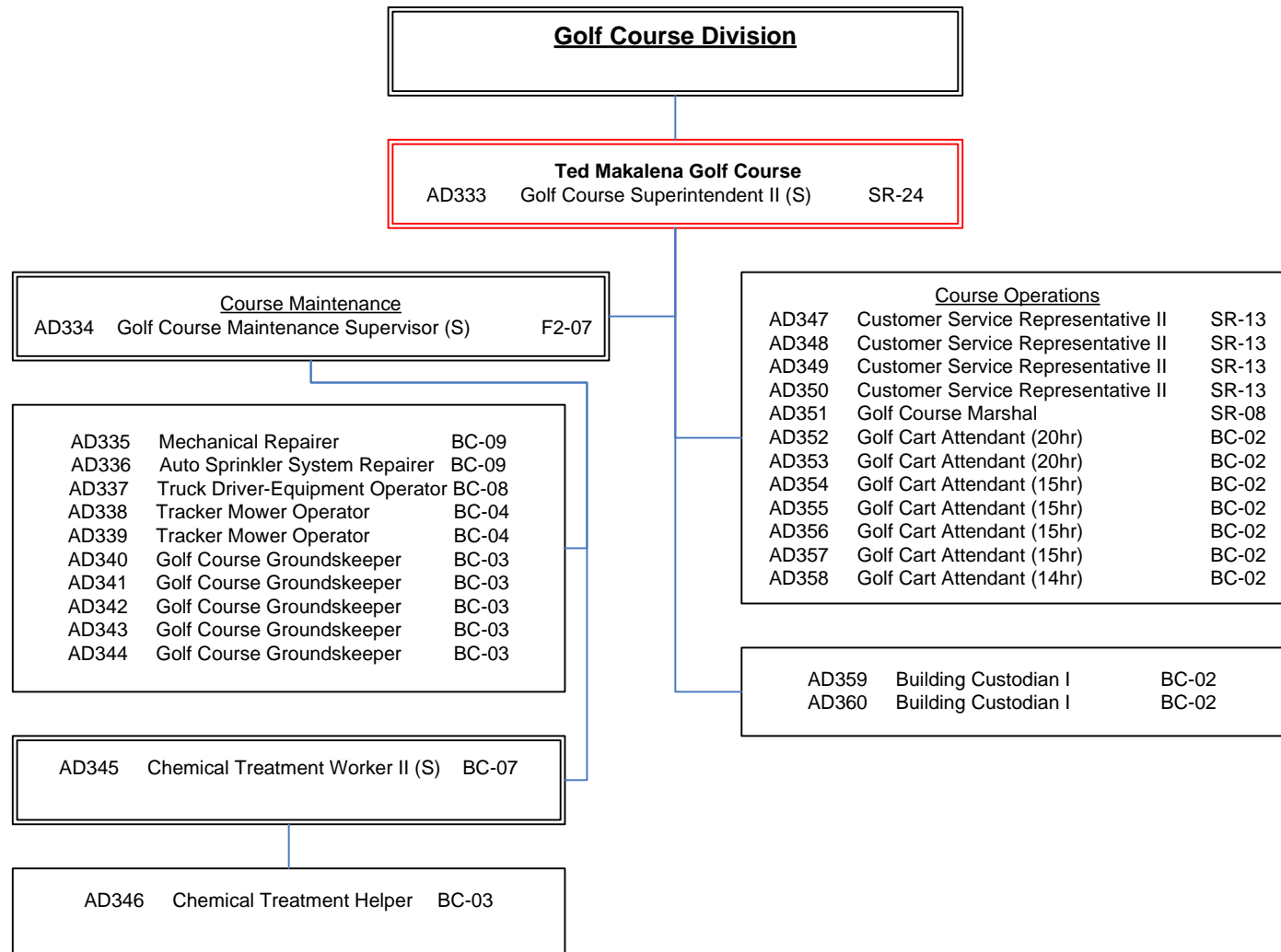
City & County of Honolulu
Department of Enterprise Services
Chart E: Golf Course Division
Organization Chart



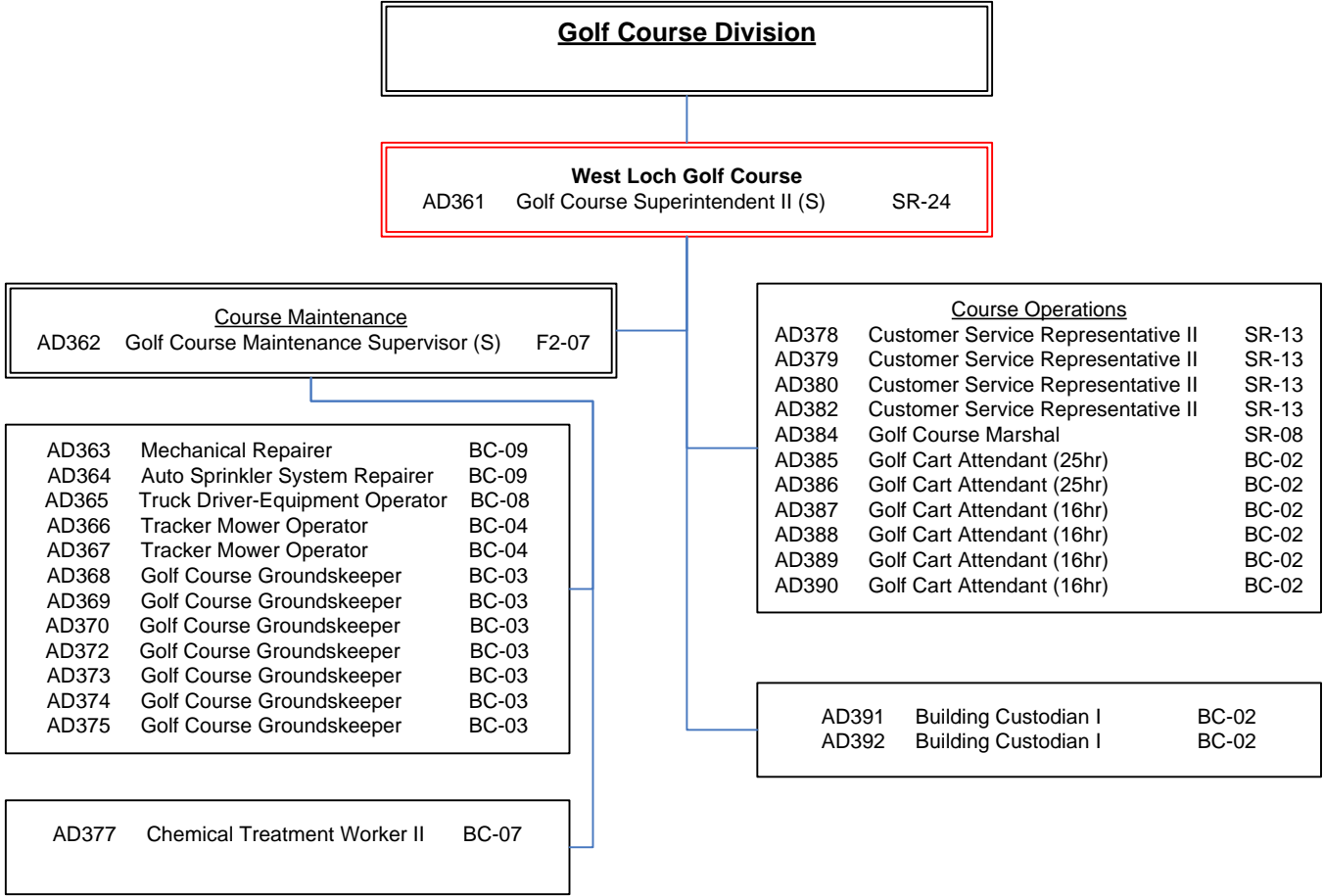
City & County of Honolulu
 Department of Enterprise Services
 Chart E I: Golf Course Division
 Organization Chart



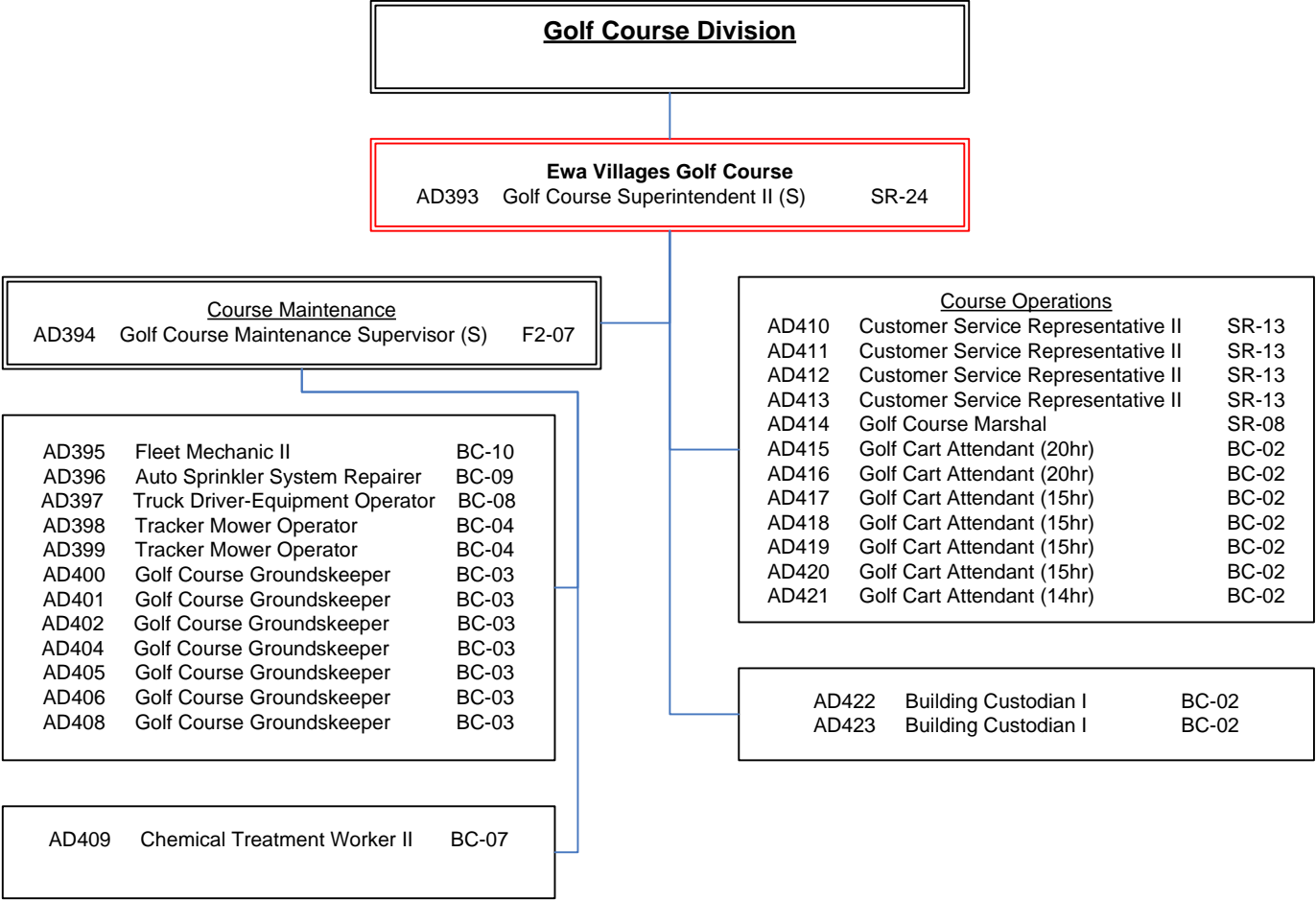
City & County of Honolulu
 Department of Enterprise Services
 Chart E II: Golf Course Division
 Organization Chart



City & County of Honolulu
 Department of Enterprise Services
 Chart E III: Golf Course Division
 Organization Chart



City & County of Honolulu
 Department of Enterprise Services
 Chart E IV: Golf Course Division
 Organization Chart



City & County of Honolulu
 Department of Enterprise Services
 Chart E V: Golf Course Division
 Organization Chart



City & County of Honolulu
Department of Enterprise Services
Chart E VI: Golf Course Division
Organization Chart

