

Kapolei Maintenance Facility and Transit Center

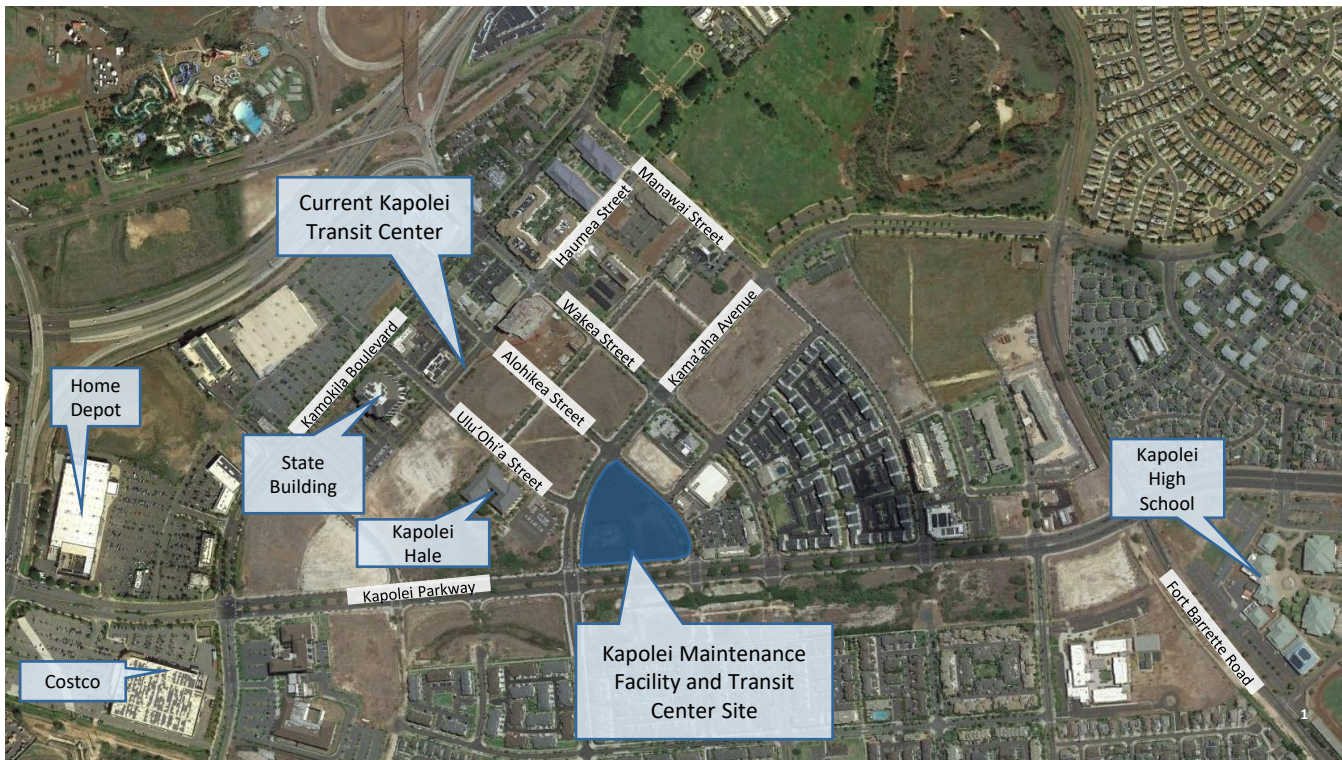
Overview

The City Department of Transportation Services is conducting conceptual planning and design to assess alternatives for the development of a new mobility facility in the heart of Kapolei. The Project site will include a full transit center capable of accommodating several transit routes at the same time for passengers to transfer between buses to continue their trips. The Project will be a mobility hub considering pedestrians, bicycles, scooters, drop-off/pick-up, and other modes as well as passenger amenities.

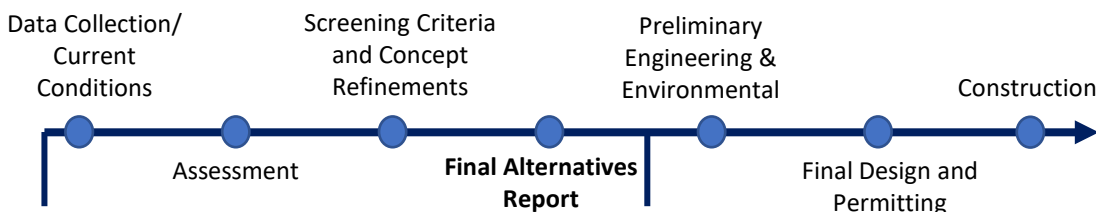
The Kapolei Maintenance Facility & Transit Center will focus on a new support facility for the public transit system to supplement the current three facilities at Kalihi and Pearl City, supporting fixed route and paratransit services. This new facility could support administration and light maintenance and operations functions. Fixed route and/or paratransit vehicles could be stored at the site providing service efficiencies.

Kapolei has seen tremendous growth over the past twenty years. The City and State located facilities in Kapolei and commercial and residential development has grown. The Project site has become a new center for the expanding City. This Project presents an opportunity to review potential mixed used development alternatives including commercial and affordable housing options.

Project Location



Project Phases



Kapolei Maintenance Facility and Transit Center Alternatives Analysis

Future Project Phases

