



King Street Bus Lane

September 2022

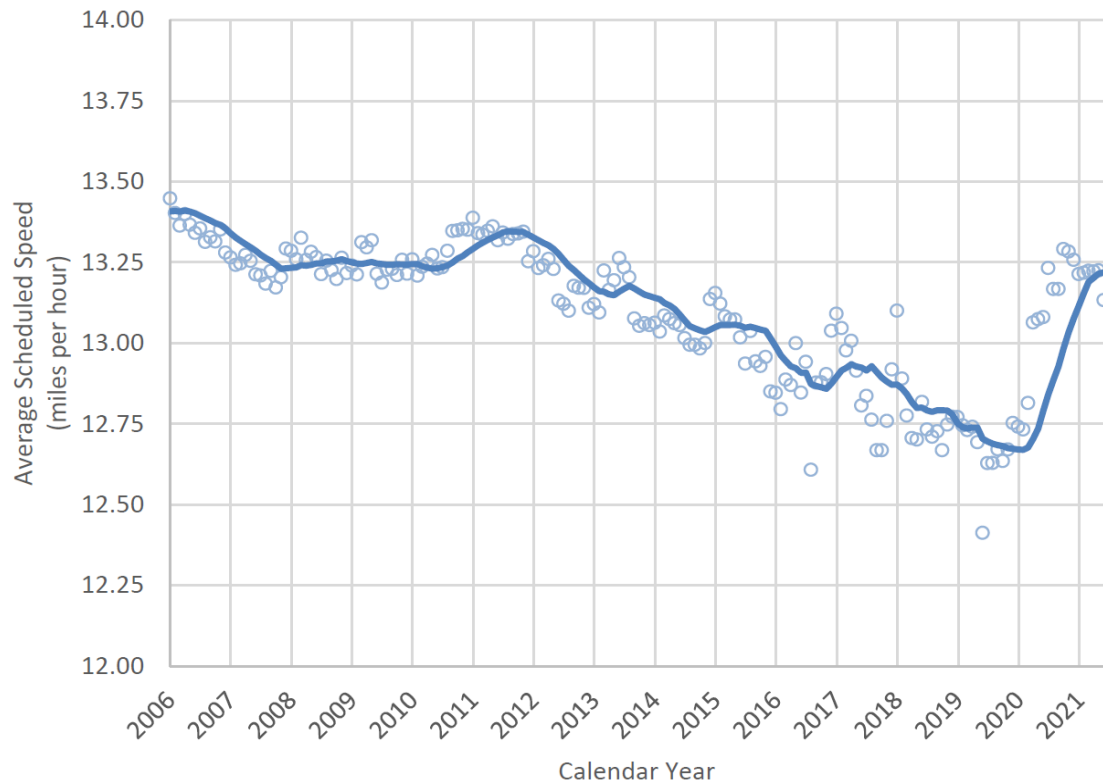


Honolulu COMPLETESTREETS

American Cities
Climate Challenge

N NELSON
NYGAARD
Mobility | Accessibility | Sustainability

Transit speed on O'ahu continues on a downward trend



Bus lane on King Street can benefit thousands of people

King Street is the busiest corridor in the State.

37 Bus routes



17,000+ Passengers daily



Nearly half of all people on the road are on the bus during the rush hour, but the bus barely moves faster than bikes (and sometimes pedestrians).

73% of O'ahu supports bus lanes.

New bus lane on King Street is the first in 30+ years

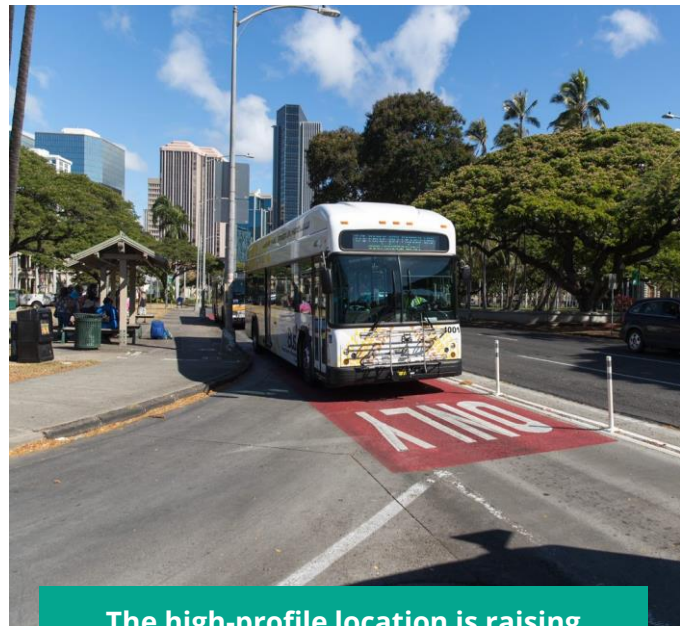
In 2020, we constructed a one-mile bus lane along King Street through Downtown Honolulu.

Here's what we learned:

- **Bus travel times:** Reduced bus travel times by **20-30%**
- **Bus reliability:** Improved bus reliability by **11-17%**
- **Operating expense:** Save up to **\$560,000 / year**
- **Impact to traffic:** Non-bus traffic travel times increased by **1-2 mins, only at peak hours**

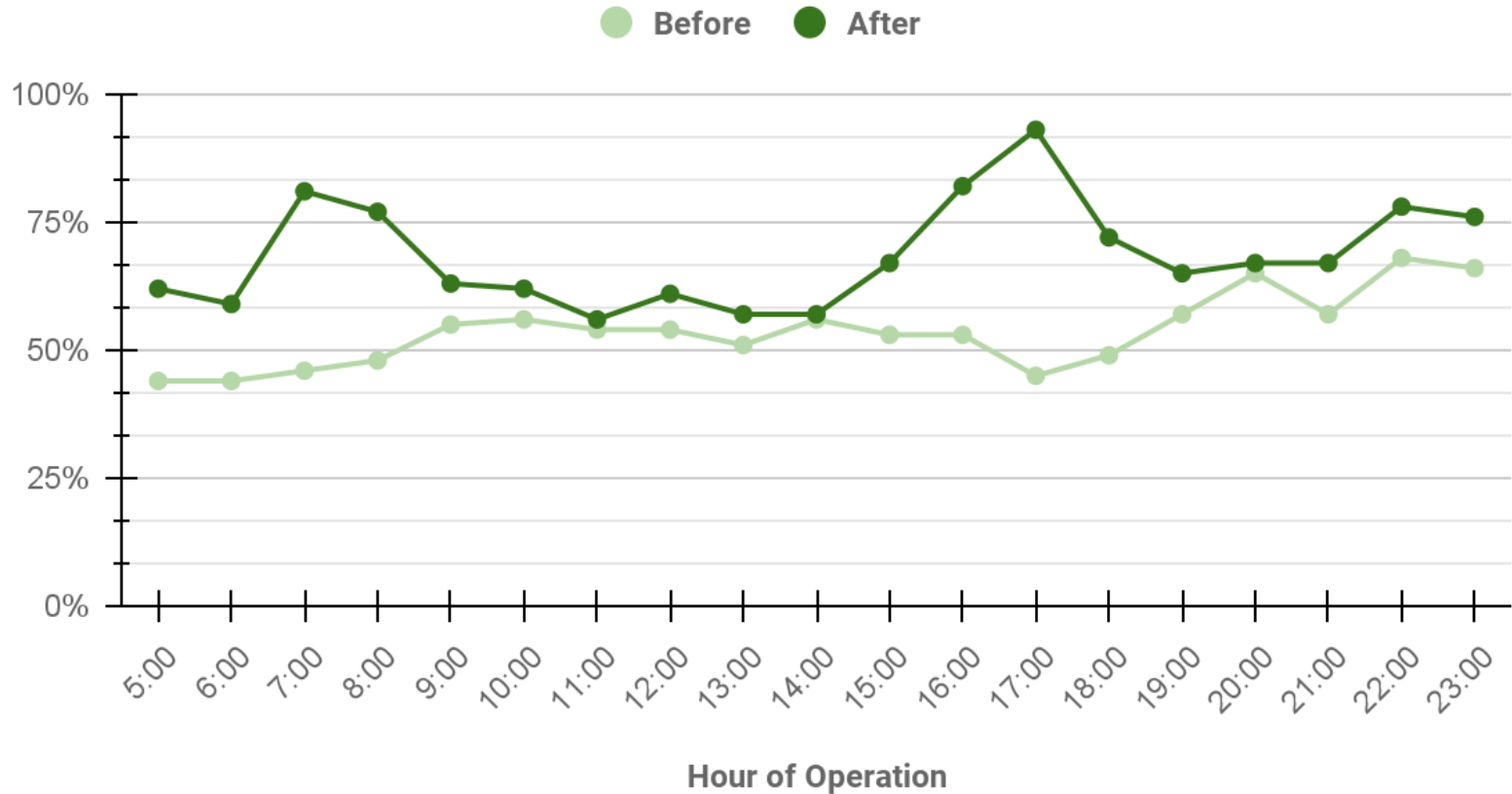
"Should continue all the way down Kapiolani Blvd. and King St. going Diamond Head."

"I feel so special in my own bus lane!!! I can get to work faster and rely on that fact. The Bus is a great way to commute!"



The high-profile location is raising awareness of bus lanes, paving the way for a broader transit-priority network!

Bus Speed as a Percentage of General Traffic Speed

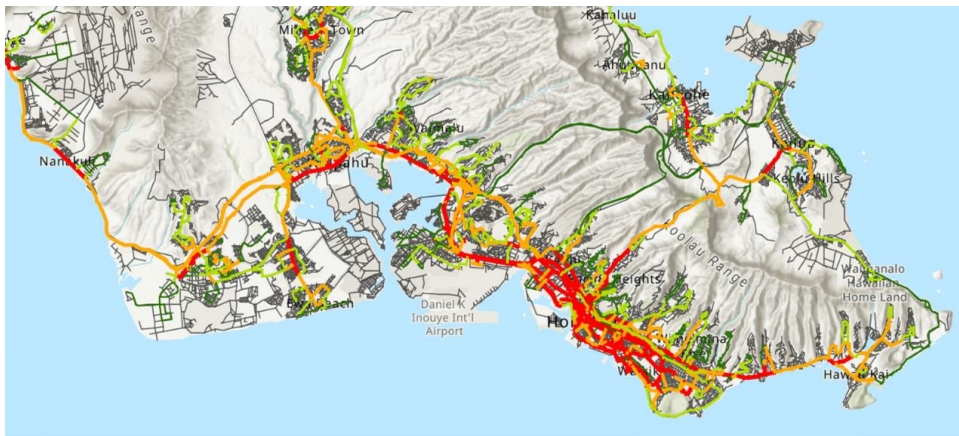


We are planning our next bus lane project in Waikiki

Where: Kuhio Avenue (Olohana to Kapahulu)

What: Bus-only lane on both sides of the street.
Private buses, trolleys, and coaches allowed.

When: Installation anticipated in late 2023



Kuhio Avenue by the Numbers

10

TheBus routes



2.5M

TheBus trips annually



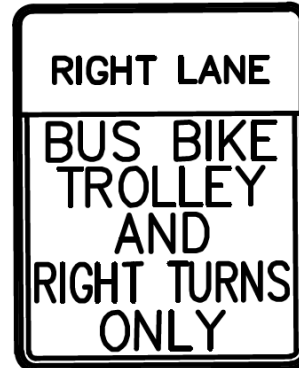
55%

of people on the street at
rush hour are walking,
biking, or riding transit.

“Quick Build” project delivery

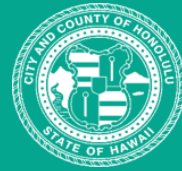
- Procured construction through private contractors (no City crews available)
- Construction cost = \$168K
- In-house construction management
- Concept to completion in 10 months!

- Charted a streamlined internal approval process for various types of signing/stripping projects:
 - Bus lanes
 - Bike lanes
 - Pedestrian crossing upgrades
 - Protected shoulders
 - Lane-line hardening
 - Traffic circles/roundabouts





Mahalo



Complete Streets Program
honolulu.gov/completestreets
completestreets@honolulu.gov

