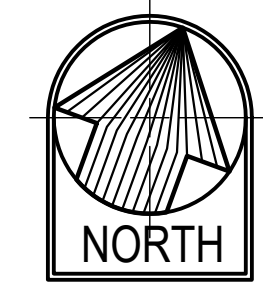
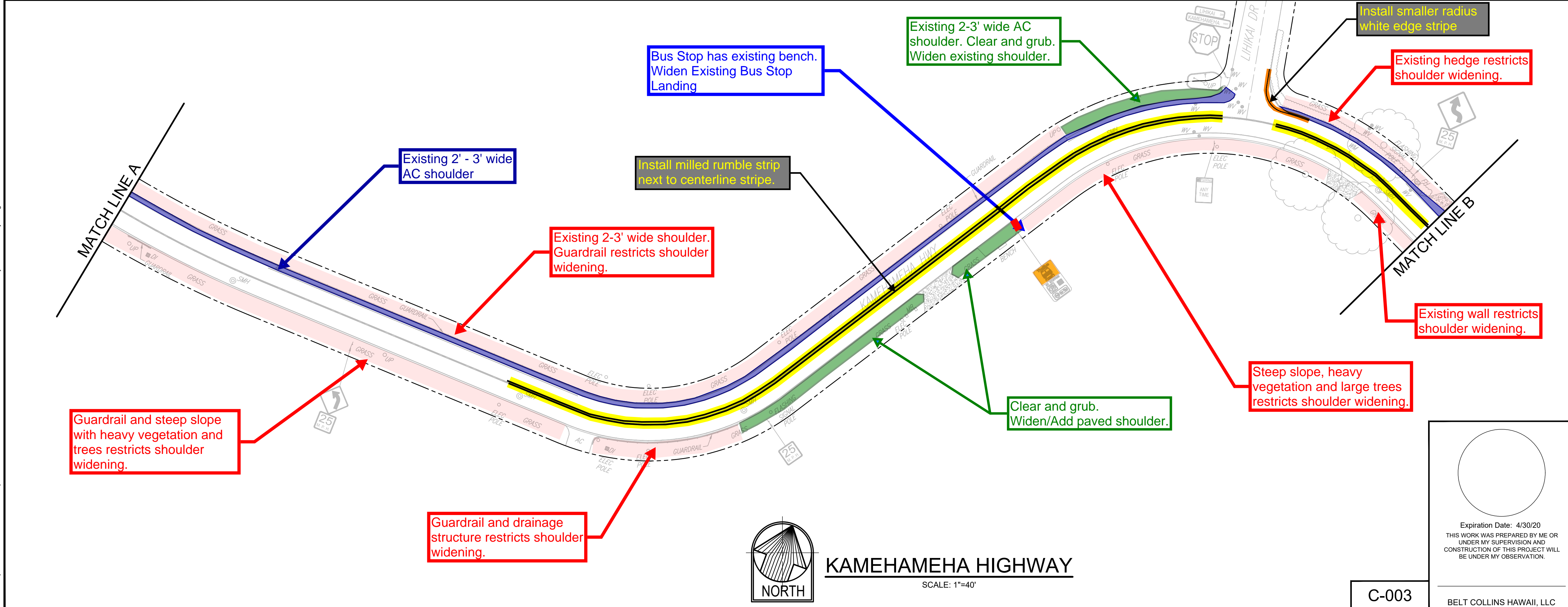


KAMEHAMEHA HIGHWAY

SCALE: 1"=40'

- LEGEND**
- Opportunities for roadway shoulder improvements (3' wide max where feasible unless otherwise noted)
 - Existing Sidewalk and Shoulder
 - Striping Improvement
 - Milled Rumble Strip next to centerline stripes
 - Roadway improvements to sidewalk/shoulder restricted due to existing conditions
 - Bus Landing Area



KAMEHAMEHA HIGHWAY

SCALE: 1"=40'

GRAPHIC SCALE



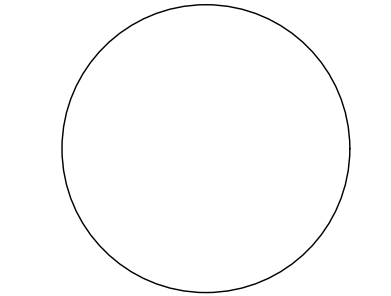
REVISION	DATE	BRIEF DESCRIPTION	BY	APPROVED

DEPARTMENT OF TRANSPORTATION SERVICES
CITY AND COUNTY OF HONOLULU

COMPLETE STREETS PLANNING
REHABILITATION OF STREETS UNITS 73A, 73B, AND 73C
OAHU, HAWAII

KAMEHAMEHA HIGHWAY - 1

ENGINEER: LN/JS DATE: September 2020
DRAFTSMAN: SCALE: AS NOTED
CHK BY: LN REF: -



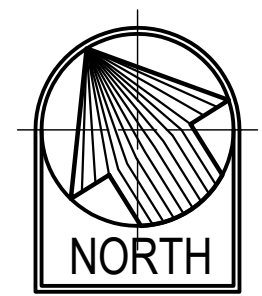
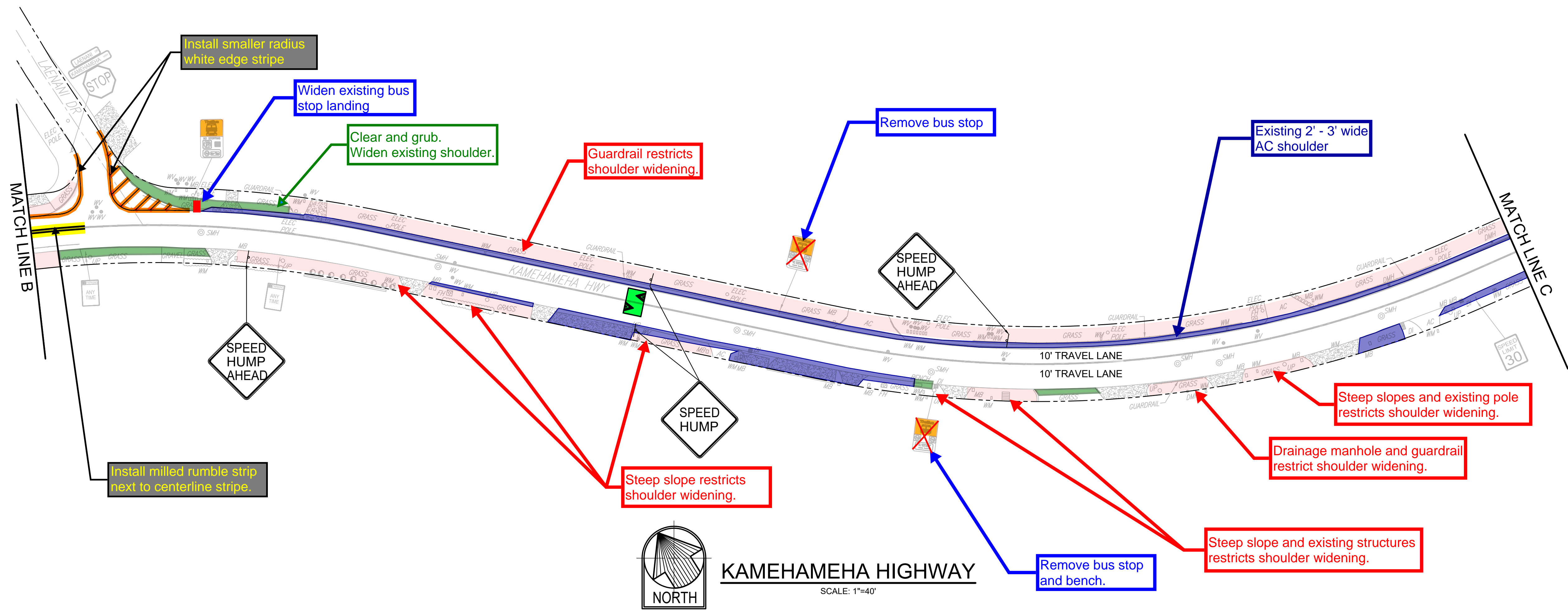
Expiration Date: 4/30/20
THIS WORK WAS PREPARED BY ME OR UNDER MY SUPERVISION AND CONSTRUCTION OF THIS PROJECT WILL BE UNDER MY OBSERVATION.

C-003

BELT COLLINS HAWAII, LLC

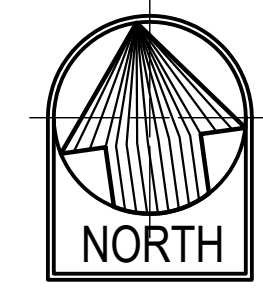
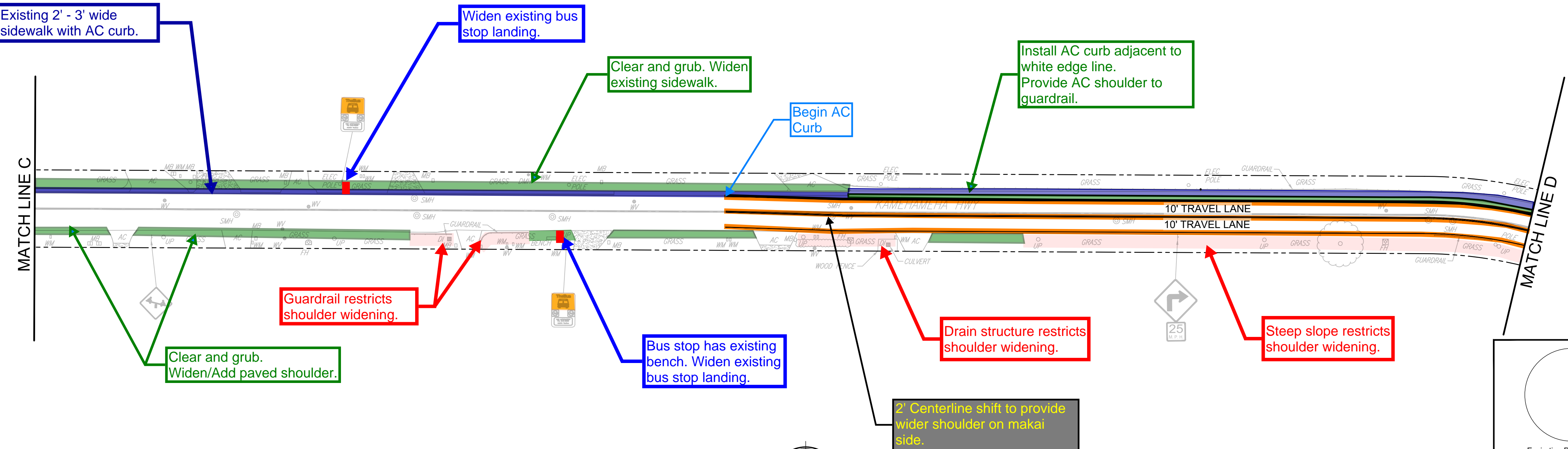
FILE	POCKET	FOLDER	NO.

This is Sheet 3 of 3. All sheets are part of the same project. If you are viewing this sheet in isolation, it is not intended to be used as a standalone document. For more information, please contact the project manager.

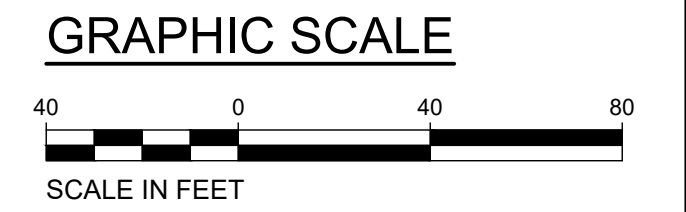


KAMEHAMEHA HIGHWAY
SCALE: 1"=40'

- LEGEND**
- Opportunities for roadway shoulder improvements (3' wide max where feasible unless otherwise noted)
 - Existing Sidewalk and Shoulder
 - Striping Improvement
 - Milled Rumble Strip next to centerline stripes
 - Roadway improvements to sidewalk/shoulder restricted due to existing conditions
 - Bus Landing Area
 - Speed Hump



KAMEHAMEHA HIGHWAY
SCALE: 1"=40'



REVISION	DATE	BRIEF DESCRIPTION	BY	APPROVED

DEPARTMENT OF TRANSPORTATION SERVICES
CITY AND COUNTY OF HONOLULU

COMPLETE STREETS PLANNING
REHABILITATION OF STREETS UNITS 73A, 73B, AND 73C
OAHU, HAWAII

KAMEHAMEHA HIGHWAY - 2

ENGINEER: LN/JS DATE: October 2019
DRAFTSMAN: SCALE: AS NOTED
CHK BY: LN REF: -

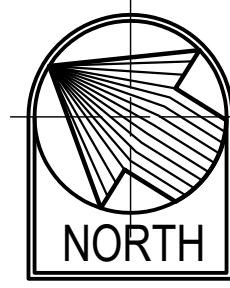
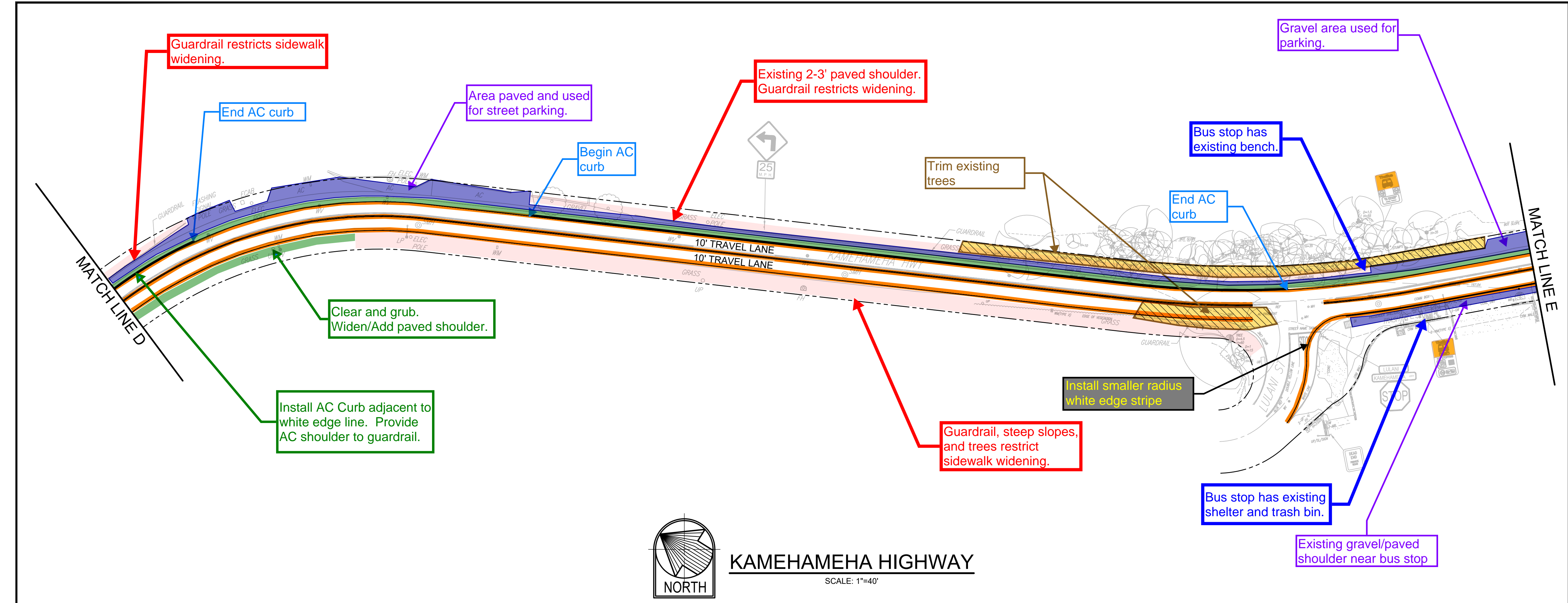
Expiration Date: 4/30/20
THIS WORK WAS PREPARED BY ME OR UNDER MY SUPERVISION AND CONSTRUCTION OF THIS PROJECT WILL BE UNDER MY OBSERVATION.

C-004

BELT COLLINS HAWAII, LLC

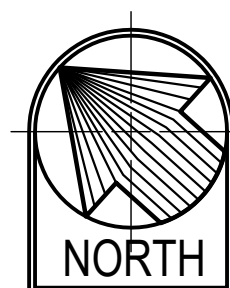
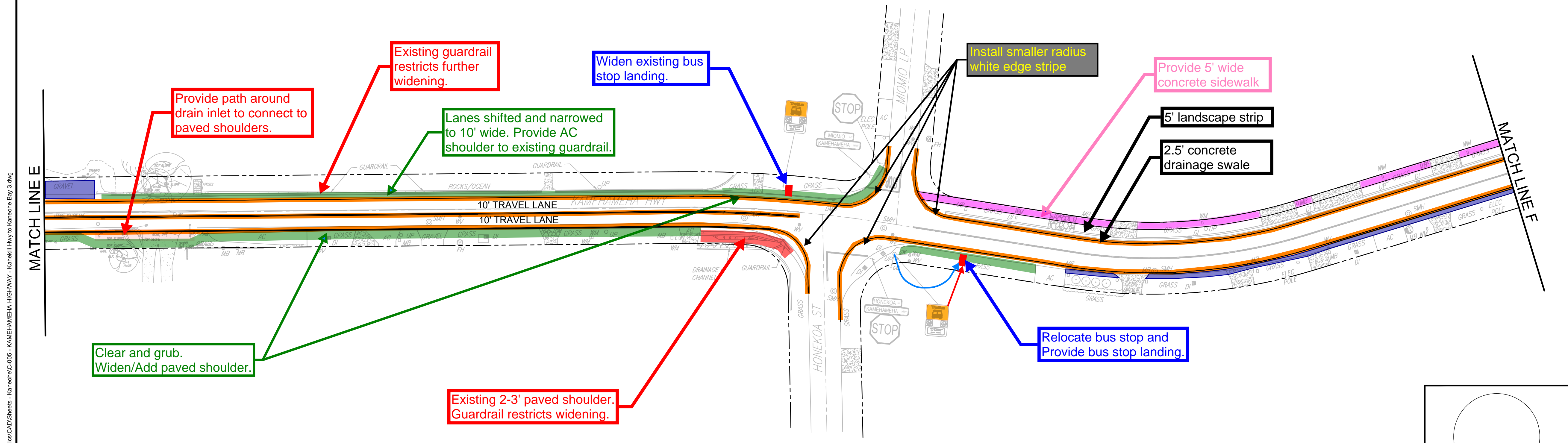
FILE	POCKET	FOLDER	NO.

This is Sheet 4 of 000 sheets. All sheets are part of the same project. If you are not receiving all sheets, please contact the project manager.

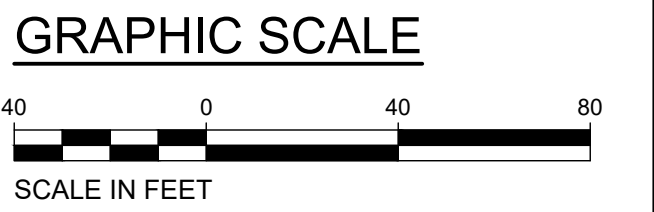


KAMEHAMEHA HIGHWAY
SCALE: 1"=40'

- LEGEND**
- Opportunities for roadway shoulder improvements (3' wide max where feasible unless otherwise noted)
 - Existing Sidewalk and Shoulder
 - Striping Improvement
 - Roadway improvements to sidewalk/shoulder restricted due to existing conditions
 - Bus Landing Area
 - Tree Trimming Area
 - Concrete Sidewalk



KAMEHAMEHA HIGHWAY
SCALE: 1"=40'



REVISION	DATE	BRIEF DESCRIPTION	BY	APPROVED

Expiration Date: 4/30/20
THIS WORK WAS PREPARED BY ME OR UNDER MY SUPERVISION AND CONSTRUCTION OF THIS PROJECT WILL BE UNDER MY OBSERVATION.

DEPARTMENT OF TRANSPORTATION SERVICES
CITY AND COUNTY OF HONOLULU

**COMPLETE STREETS PLANNING
REHABILITATION OF STREETS UNITS 73A, 73B, AND 73C
OAHU, HAWAII**

KAMEHAMEHA HIGHWAY - 3

ENGINEER: LN/JS DATE: October 2019
DRAFTSMAN: SCALE: AS NOTED
CHK BY: LN REF: -

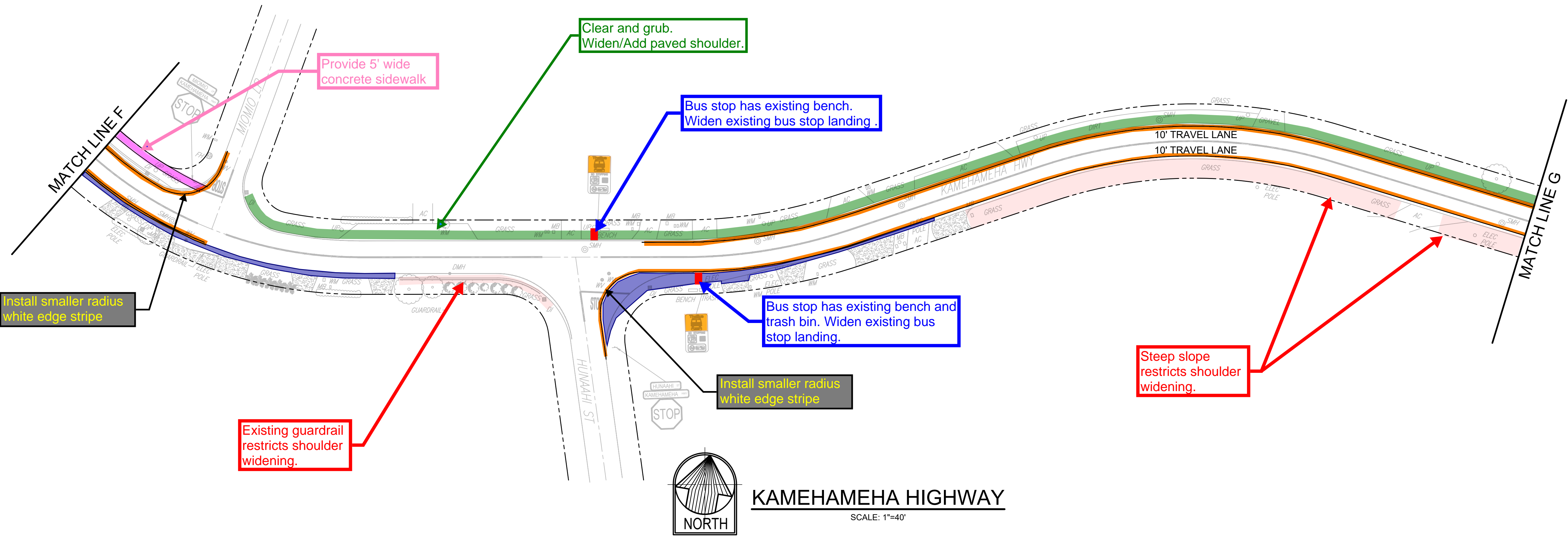
C-005

BELT COLLINS HAWAII, LLC

FILE	POCKET	FOLDER	NO.

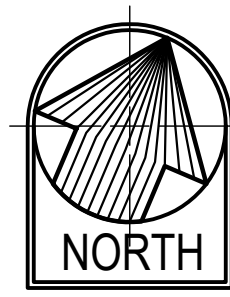
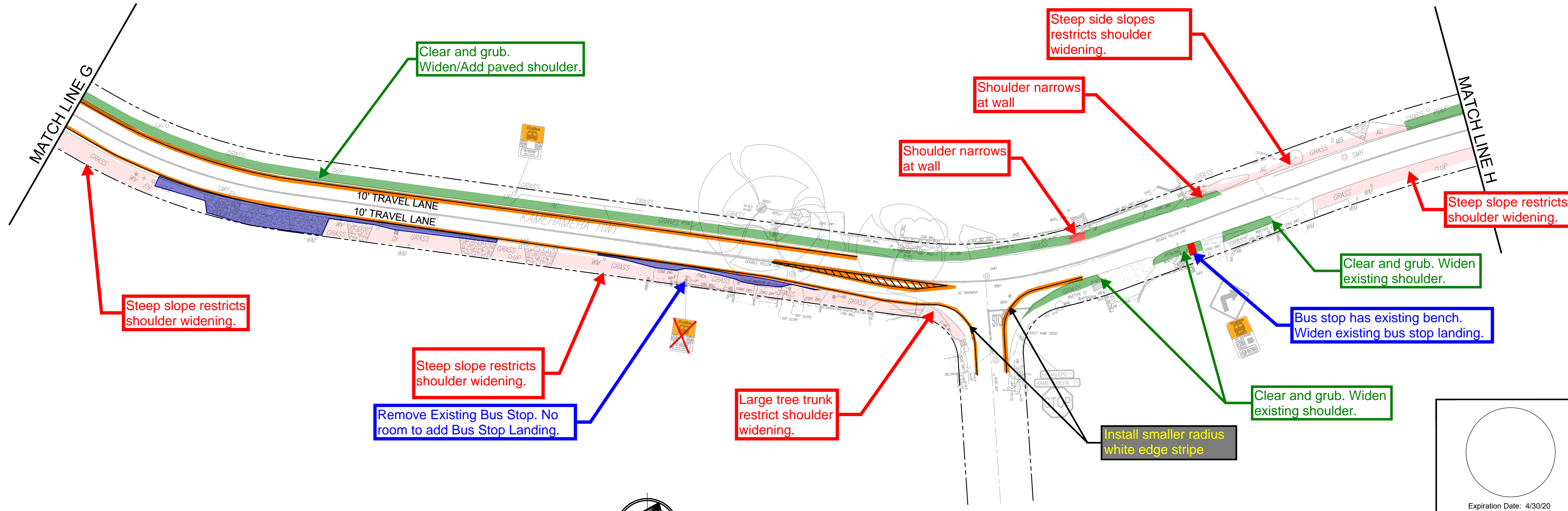
This is Sheet 5 of 3 sheets. All sheets are part of the same project. The sheets are numbered 1 through 3. The sheets are numbered 1 through 3.

This is a preliminary drawing. It is not to be used for construction. It is for informational purposes only.

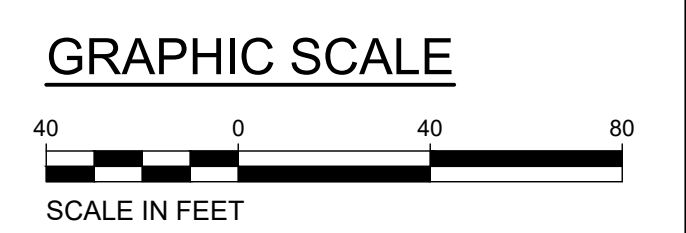


KAMEHAMEHA HIGHWAY
SCALE: 1"=40'

- LEGEND**
- Opportunities for roadway shoulder improvements (3' wide where feasible unless otherwise noted)
 - Existing Sidewalk and Shoulder
 - Striping Improvement
 - Roadway improvements to sidewalk/shoulder restricted due to existing conditions
 - Bus Landing Area
 - Concrete Sidewalk



KAMEHAMEHA HIGHWAY
SCALE: 1"=40'



REVISION	DATE	BRIEF DESCRIPTION	BY	APPROVED

DEPARTMENT OF TRANSPORTATION SERVICES
CITY AND COUNTY OF HONOLULU

COMPLETE STREETS PLANNING
REHABILITATION OF STREETS UNITS 73A, 73B, AND 73C
OAHU, HAWAII

KAMEHAMEHA HIGHWAY - 4

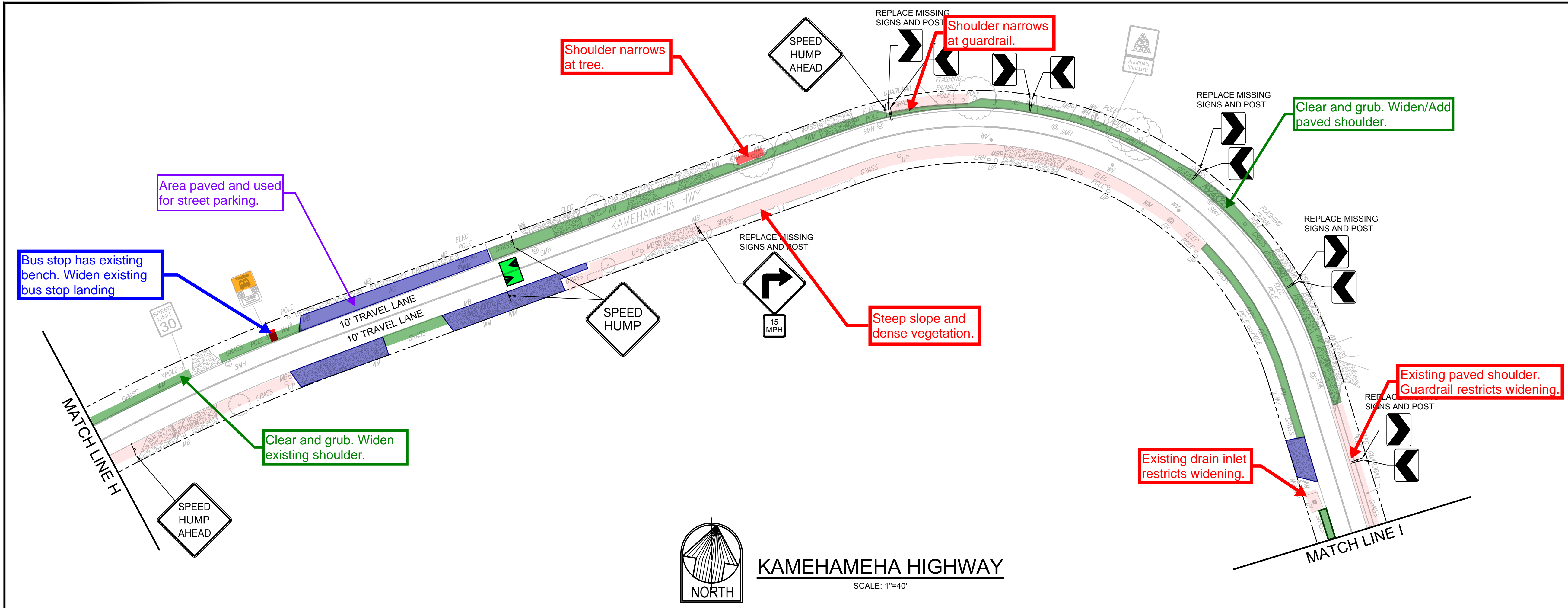
ENGINEER: LN/JS DATE: October 2019
 DRAFTSMAN: SCALE: AS NOTED
 CHK BY: LN REF:

Expiration Date: 4/30/20
 THIS WORK WAS PREPARED BY ME OR UNDER MY SUPERVISION AND CONSTRUCTION OF THIS PROJECT WILL BE UNDER MY OBSERVATION.

C-006

BELT COLLINS HAWAII, LLC

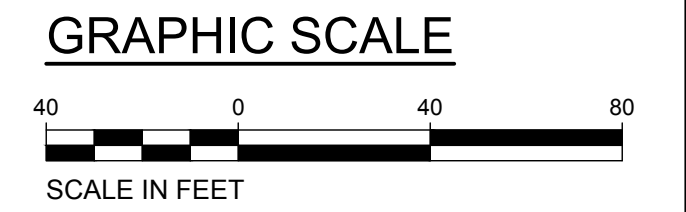
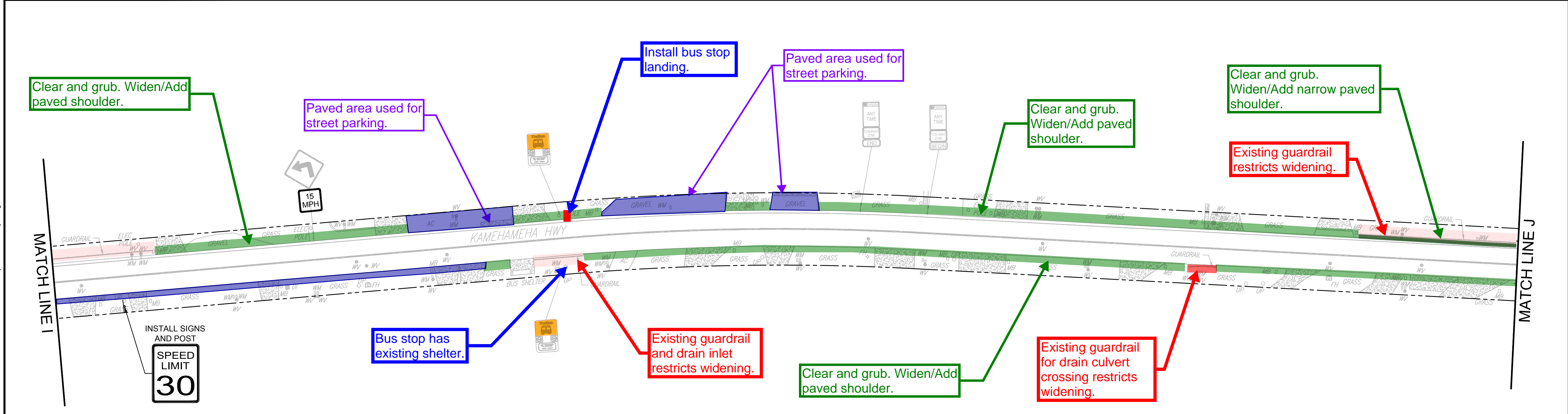
FILE	POCKET	FOLDER	NO.



- LEGEND**
- Opportunities for roadway shoulder improvements (3' wide max where feasible unless otherwise noted)
 - Existing Sidewalk and Shoulder
 - Roadway improvements to sidewalk/shoulder restricted due to existing conditions
 - Bus Landing Area
 - Speed Hump

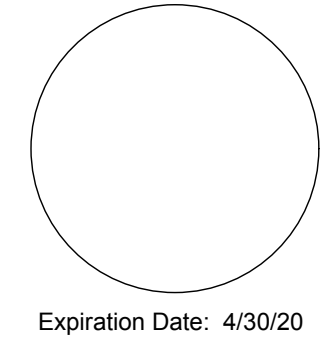


KAMEHAMEHA HIGHWAY
 SCALE: 1"=40'





KAMEHAMEHA HIGHWAY
 SCALE: 1"=40'


 Expiration Date: 4/30/20
 THIS WORK WAS PREPARED BY ME OR UNDER MY SUPERVISION AND CONSTRUCTION OF THIS PROJECT WILL BE UNDER MY OBSERVATION.
 BELT COLLINS HAWAII, LLC

REVISION	DATE	BRIEF DESCRIPTION	BY	APPROVED

DEPARTMENT OF TRANSPORTATION SERVICES
 CITY AND COUNTY OF HONOLULU
COMPLETE STREETS PLANNING
 REHABILITATION OF STREETS UNITS 73A, 73B, AND 73C
 OAHU, HAWAII
KAMEHAMEHA HIGHWAY - 5

ENGINEER: LN/JS DATE: October 2019
 DRAFTSMAN: SCALE: AS NOTED
 CHK BY: LN REF:

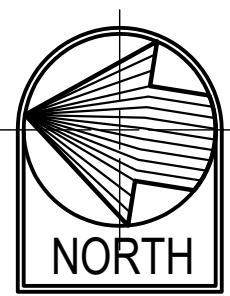
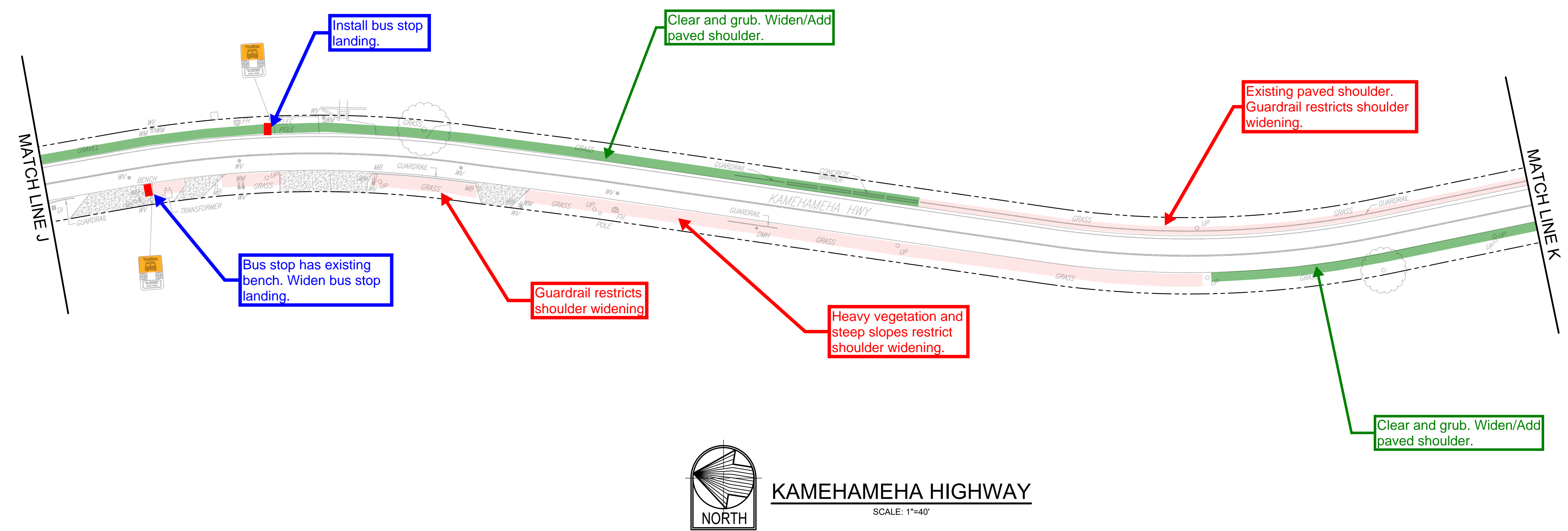
C-007

FILE	POCKET	FOLDER	NO.

This is a preliminary drawing. It is not to be used for construction. All dimensions and notes are subject to change without notice.

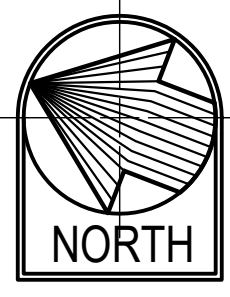
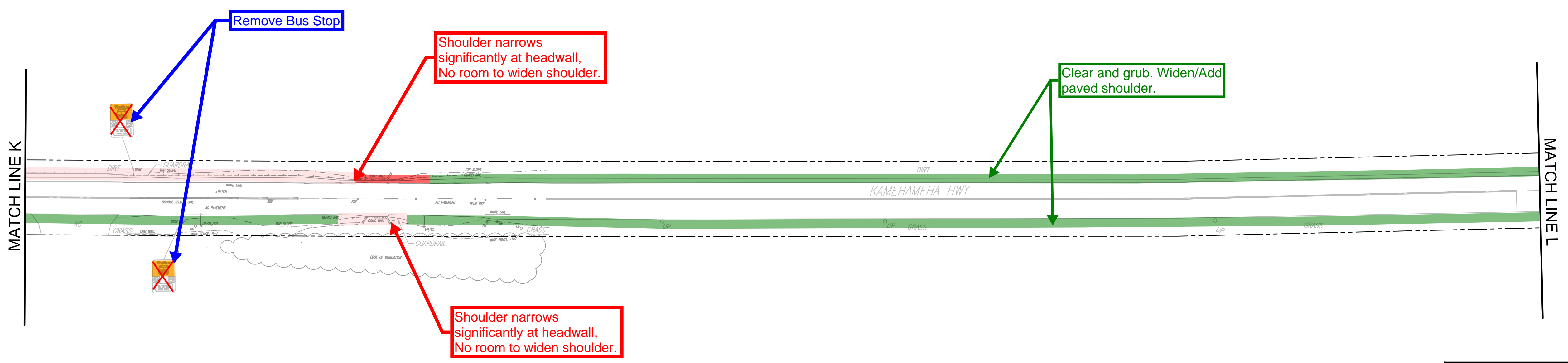
LEGEND

- Opportunities for roadway shoulder improvements (3' wide max where feasible unless otherwise noted)
- Roadway improvements to sidewalk/shoulder restricted due to existing conditions
- Bus Landing Area



KAMEHAMEHA HIGHWAY

SCALE: 1"=40'



KAMEHAMEHA HIGHWAY

SCALE: 1"=40'

GRAPHIC SCALE



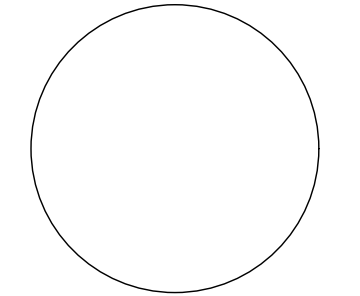
REVISION	DATE	BRIEF DESCRIPTION	BY	APPROVED

DEPARTMENT OF TRANSPORTATION SERVICES
CITY AND COUNTY OF HONOLULU

COMPLETE STREETS PLANNING
REHABILITATION OF STREETS UNITS 73A, 73B, AND 73C
OAHU, HAWAII

KAMEHAMEHA HIGHWAY - 6

ENGINEER: LN/JS DATE: October 2019
DRAFTSMAN: - SCALE: AS NOTED
CHK BY: LN REF: -



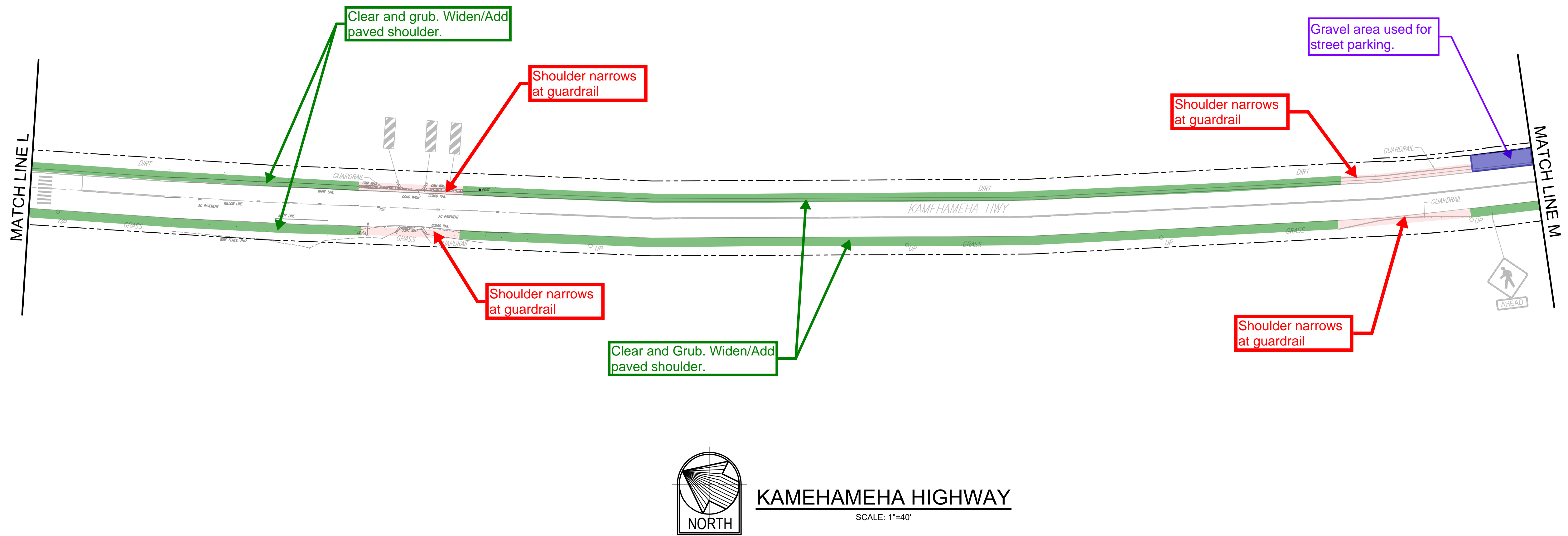
Expiration Date: 4/30/20
THIS WORK WAS PREPARED BY ME OR UNDER MY SUPERVISION AND CONSTRUCTION OF THIS PROJECT WILL BE UNDER MY OBSERVATION.

BELT COLLINS HAWAII, LLC

C-008

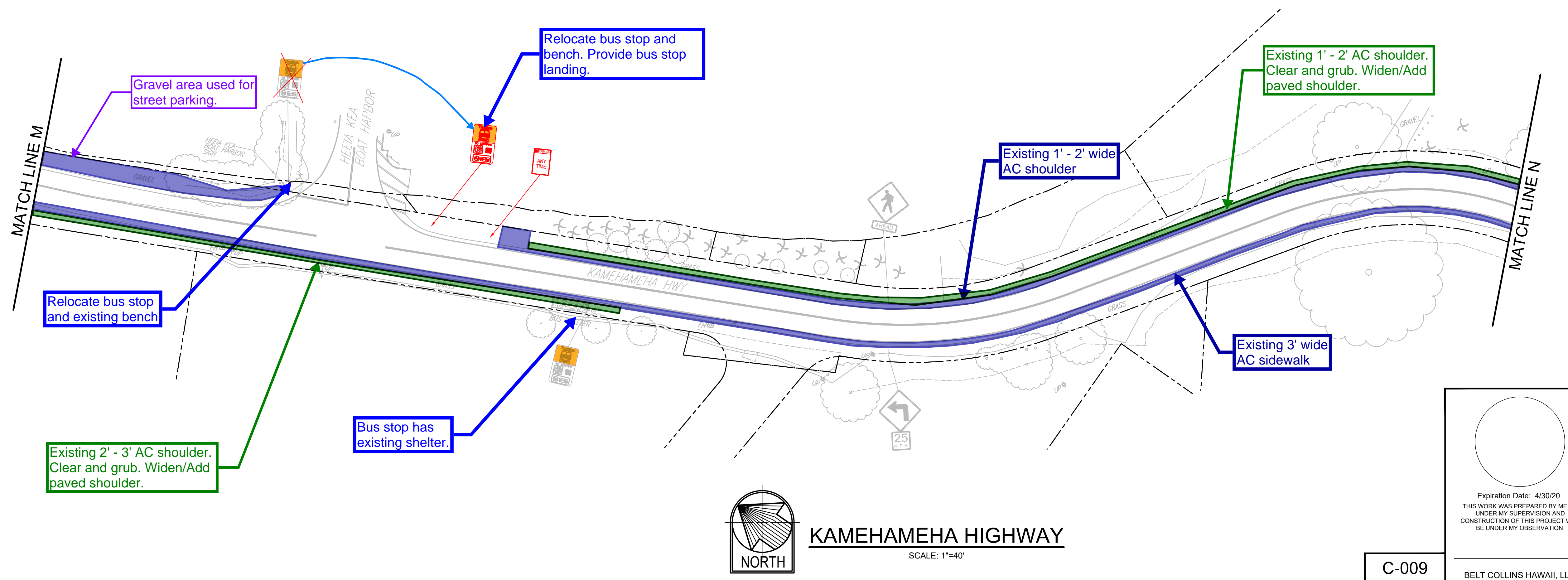
FILE	POCKET	FOLDER	NO.

This is Sheet 8 of 8 sheets. All sheets are part of the same project. KAMEHAMEHA HIGHWAY - Kamehameha Hwy to Kaneohe Bay 6.dwg

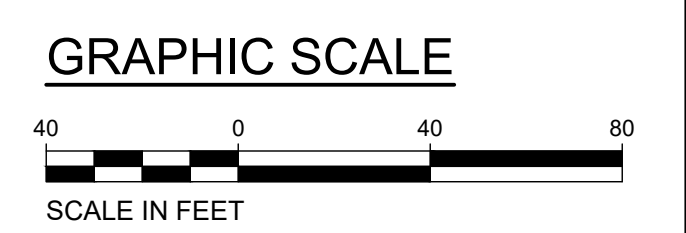



KAMEHAMEHA HIGHWAY
 SCALE: 1"=40'

- LEGEND**
- Opportunities for roadway shoulder improvements (3' wide max where feasible unless otherwise noted)
 - Existing Sidewalk and Shoulder
 - Roadway improvements to sidewalk/shoulder restricted due to existing conditions
 - Bus Landing Area




KAMEHAMEHA HIGHWAY
 SCALE: 1"=40'



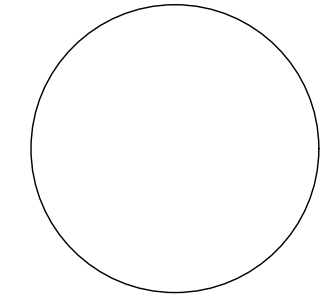
REVISION	DATE	BRIEF DESCRIPTION	BY	APPROVED

DEPARTMENT OF TRANSPORTATION SERVICES
CITY AND COUNTY OF HONOLULU

COMPLETE STREETS PLANNING
REHABILITATION OF STREETS UNITS 73A, 73B, AND 73C
OAHU, HAWAII

KAMEHAMEHA HIGHWAY - 7

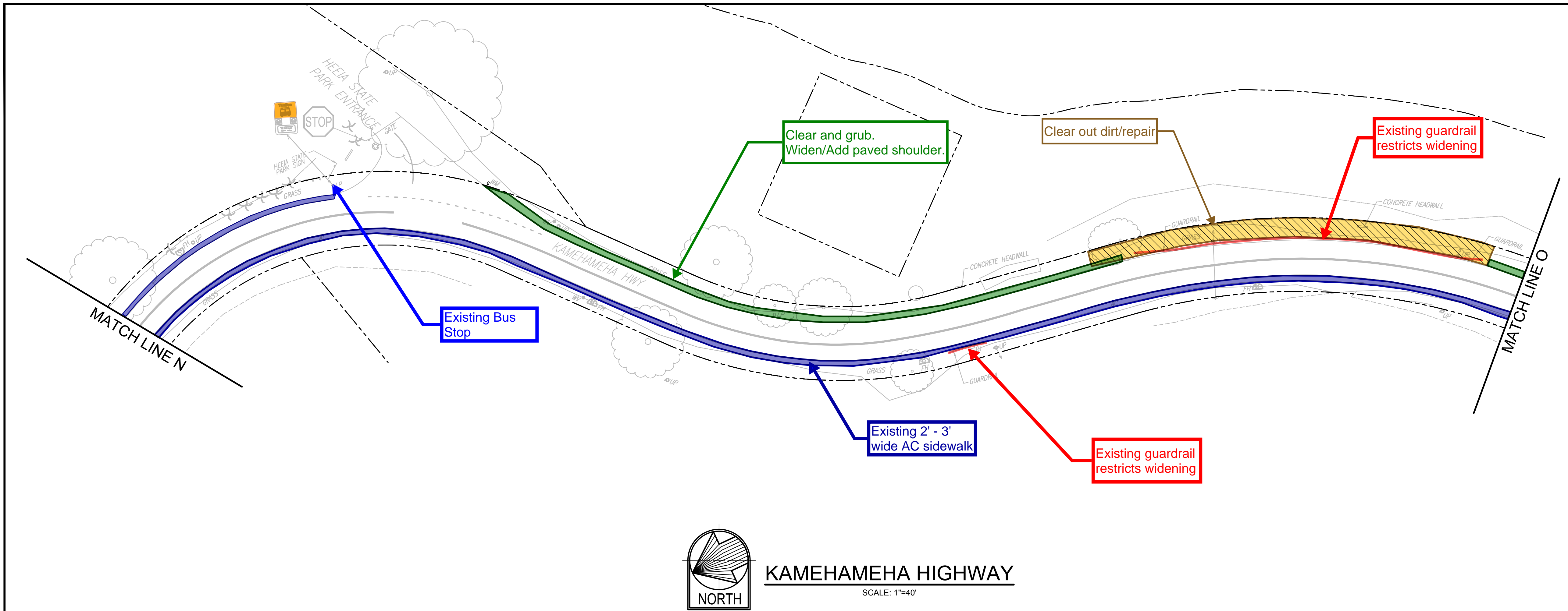
ENGINEER: LN/JJS DATE: October 2019
 DRAFTSMAN: SCALE: AS NOTED
 CHK BY: LN REF:


 Expiration Date: 4/30/20
 THIS WORK WAS PREPARED BY ME OR UNDER MY SUPERVISION AND CONSTRUCTION OF THIS PROJECT WILL BE UNDER MY OBSERVATION.
 BELT COLLINS HAWAII, LLC

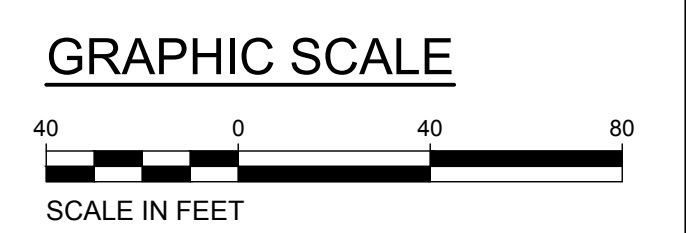
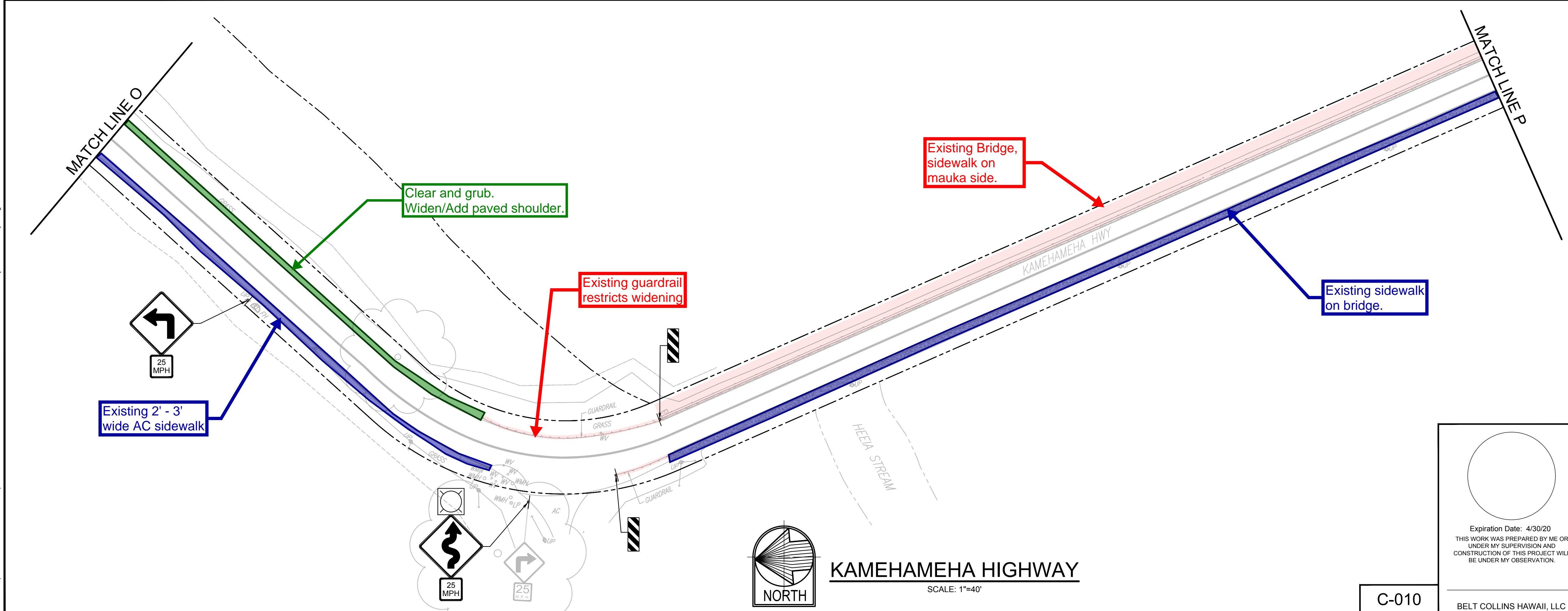
C-009

FILE	POCKET	FOLDER	NO.

This is Sheet 9 of 10 sheets. See also sheets C-008, C-009, C-010, C-011, C-012, C-013, C-014, C-015, C-016, C-017, C-018, C-019, C-020, C-021, C-022, C-023, C-024, C-025, C-026, C-027, C-028, C-029, C-030, C-031, C-032, C-033, C-034, C-035, C-036, C-037, C-038, C-039, C-040, C-041, C-042, C-043, C-044, C-045, C-046, C-047, C-048, C-049, C-050, C-051, C-052, C-053, C-054, C-055, C-056, C-057, C-058, C-059, C-060, C-061, C-062, C-063, C-064, C-065, C-066, C-067, C-068, C-069, C-070, C-071, C-072, C-073, C-074, C-075, C-076, C-077, C-078, C-079, C-080, C-081, C-082, C-083, C-084, C-085, C-086, C-087, C-088, C-089, C-090, C-091, C-092, C-093, C-094, C-095, C-096, C-097, C-098, C-099, C-100.



- LEGEND**
- Opportunities for roadway shoulder improvements (3' wide max where feasible unless otherwise noted)
 - Existing Sidewalk and Shoulder
 - Roadway improvements to sidewalk/shoulder restricted due to existing conditions
 - Clearing and grubbing



REVISION	DATE	BRIEF DESCRIPTION	BY	APPROVED

DEPARTMENT OF TRANSPORTATION SERVICES
CITY AND COUNTY OF HONOLULU

**COMPLETE STREETS PLANNING
REHABILITATION OF STREETS UNITS 73A, 73B, AND 73C
OAHU, HAWAII**

KAMEHAMEHA HIGHWAY - 8

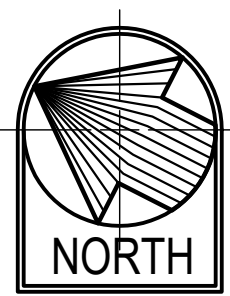
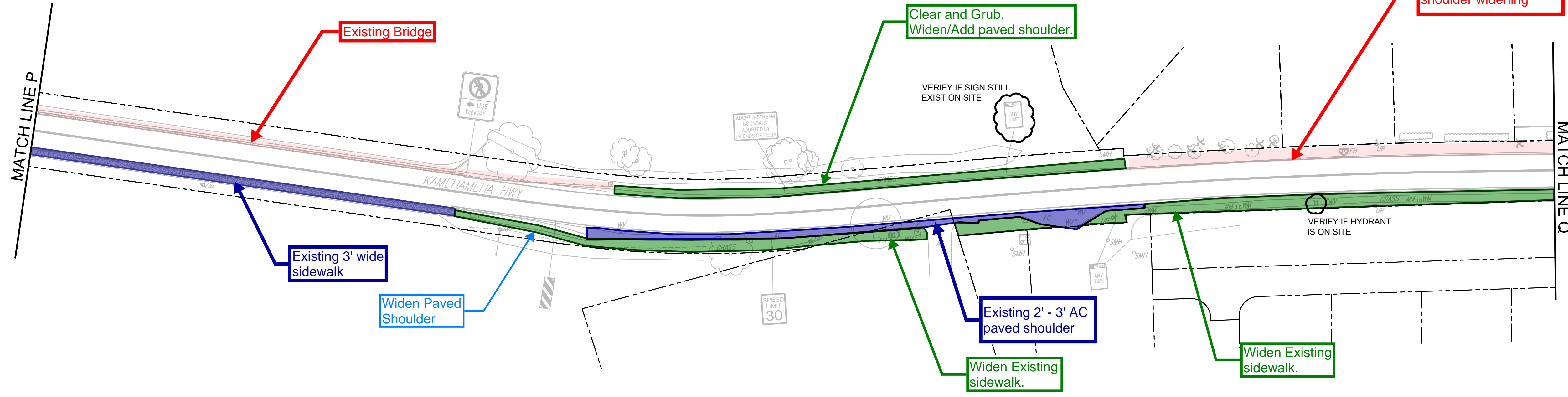
ENGINEER: LN/JS DATE: October 2019
 DRAFTSMAN: - SCALE: AS NOTED
 CHK BY: LN REF: -

Expiration Date: 4/30/20
 THIS WORK WAS PREPARED BY ME OR UNDER MY SUPERVISION AND CONSTRUCTION OF THIS PROJECT WILL BE UNDER MY OBSERVATION.

C-010

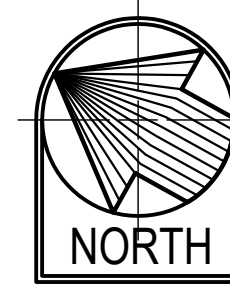
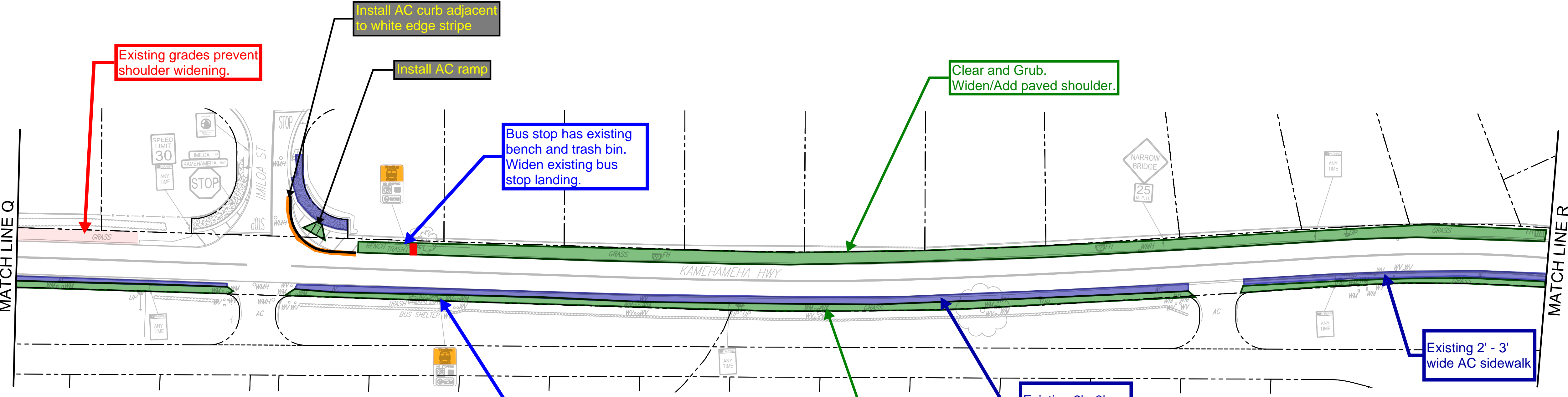
BELT COLLINS HAWAII, LLC

Title: 21 Jun 2021 - 10:45am
 M:\DOTS_Corps\Streets\2017\03\0104_Graphics\CAD\Sheets - Kamehameha Highway - Kamehameha Hwy to Kaneohe Bay 8.dwg

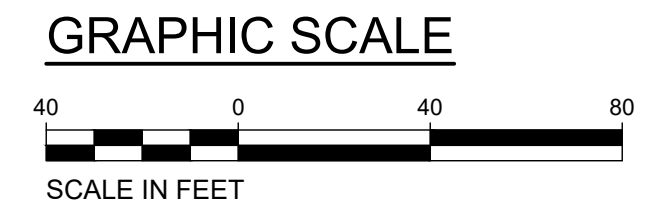


KAMEHAMEHA HIGHWAY
SCALE: 1"=40'

- LEGEND**
- Opportunities for roadway shoulder improvements (3' wide max where feasible unless otherwise noted)
 - Existing Sidewalk and Shoulder
 - Roadway improvements to sidewalk/shoulder restricted due to existing conditions
 - Bus Landing Area



KAMEHAMEHA HIGHWAY
SCALE: 1"=40'



REVISION	DATE	BRIEF DESCRIPTION	BY	APPROVED

Expiration Date: 4/30/20
THIS WORK WAS PREPARED BY ME OR UNDER MY SUPERVISION AND CONSTRUCTION OF THIS PROJECT WILL BE UNDER MY OBSERVATION.

DEPARTMENT OF TRANSPORTATION SERVICES
CITY AND COUNTY OF HONOLULU

**COMPLETE STREETS PLANNING
REHABILITATION OF STREETS UNITS 73A, 73B, AND 73C
OAHU, HAWAII**

KAMEHAMEHA HIGHWAY - 9

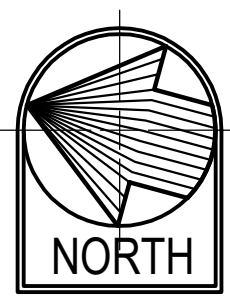
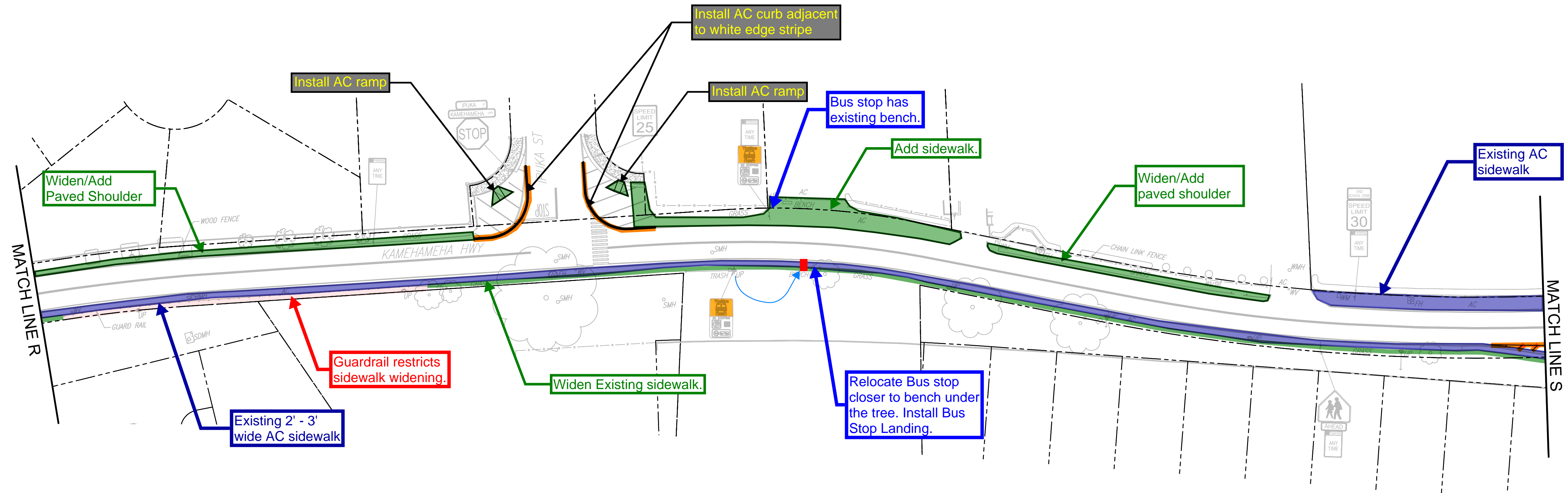
ENGINEER: LNJS DATE: October 2019
DRAFTSMAN: SCALE: AS NOTED
CHK BY: LN REF: -

C-011

BELT COLLINS HAWAII, LLC

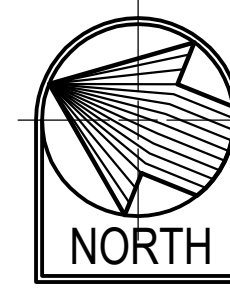
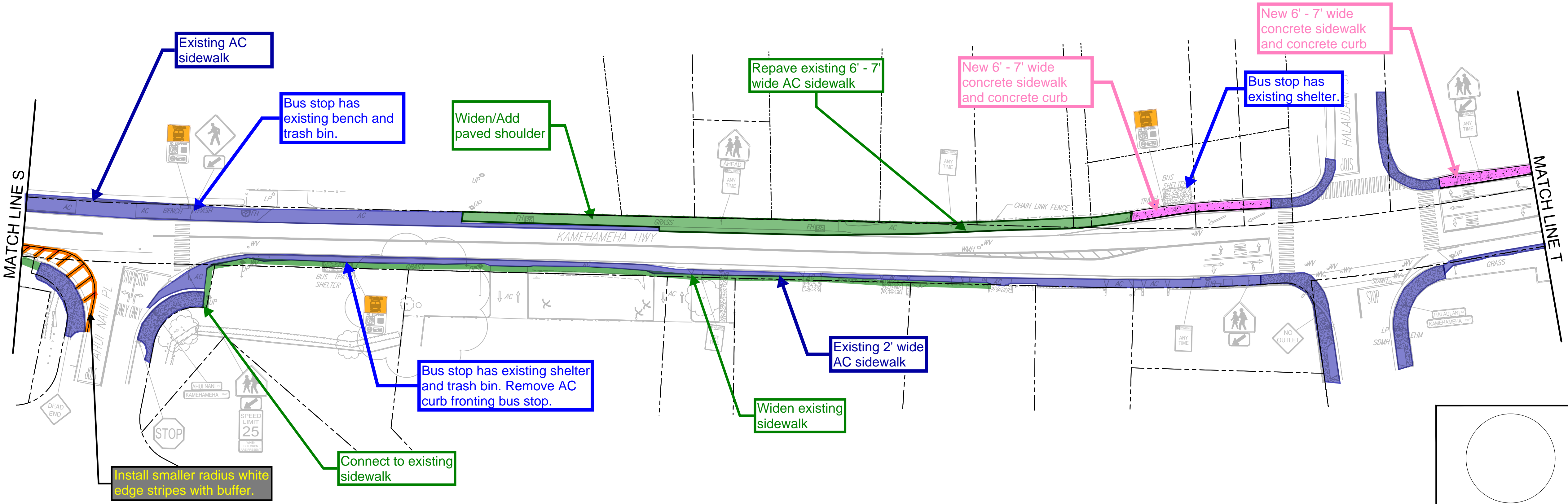
FILE	POCKET	FOLDER	NO.

This is Sheet 11 of 000 sheets. All sheets are prepared by BELT COLLINS HAWAII, LLC. All sheets are prepared by BELT COLLINS HAWAII, LLC. All sheets are prepared by BELT COLLINS HAWAII, LLC.

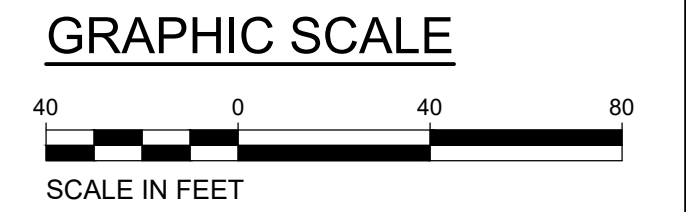


KAMEHAMEHA HIGHWAY
SCALE: 1"=40'

- LEGEND**
- Opportunities for roadway shoulder improvements (3' wide max where feasible unless otherwise noted)
 - Existing Sidewalk and Shoulder
 - Striping Improvement
 - Roadway improvements to sidewalk/shoulder restricted due to existing conditions
 - Bus Landing Area
 - Concrete Sidewalk



KAMEHAMEHA HIGHWAY
SCALE: 1"=40'



REVISION	DATE	BRIEF DESCRIPTION	BY	APPROVED

DEPARTMENT OF TRANSPORTATION SERVICES
CITY AND COUNTY OF HONOLULU

COMPLETE STREETS PLANNING
REHABILITATION OF STREETS UNITS 73A, 73B, AND 73C
OAHU, HAWAII

KAMEHAMEHA HIGHWAY - 10

ENGINEER: LN/JJS DATE: October 2019
 DRAFTSMAN: - SCALE: AS NOTED
 CHK BY: LN REF: -

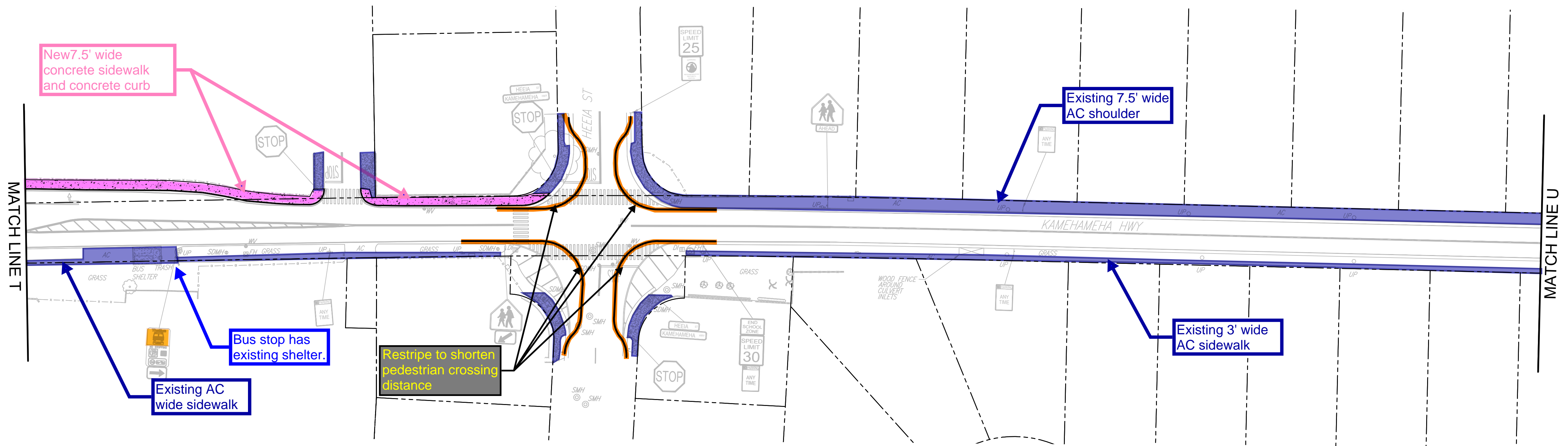
Expiration Date: 4/30/20
 THIS WORK WAS PREPARED BY ME OR UNDER MY SUPERVISION AND CONSTRUCTION OF THIS PROJECT WILL BE UNDER MY OBSERVATION.

C-012

BELT COLLINS HAWAII, LLC

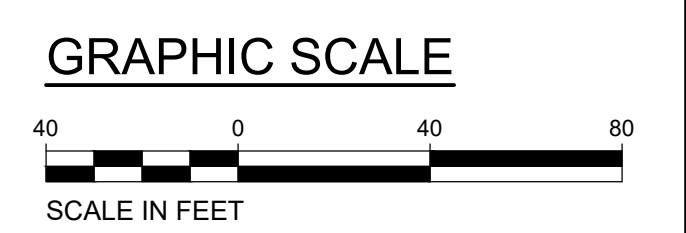
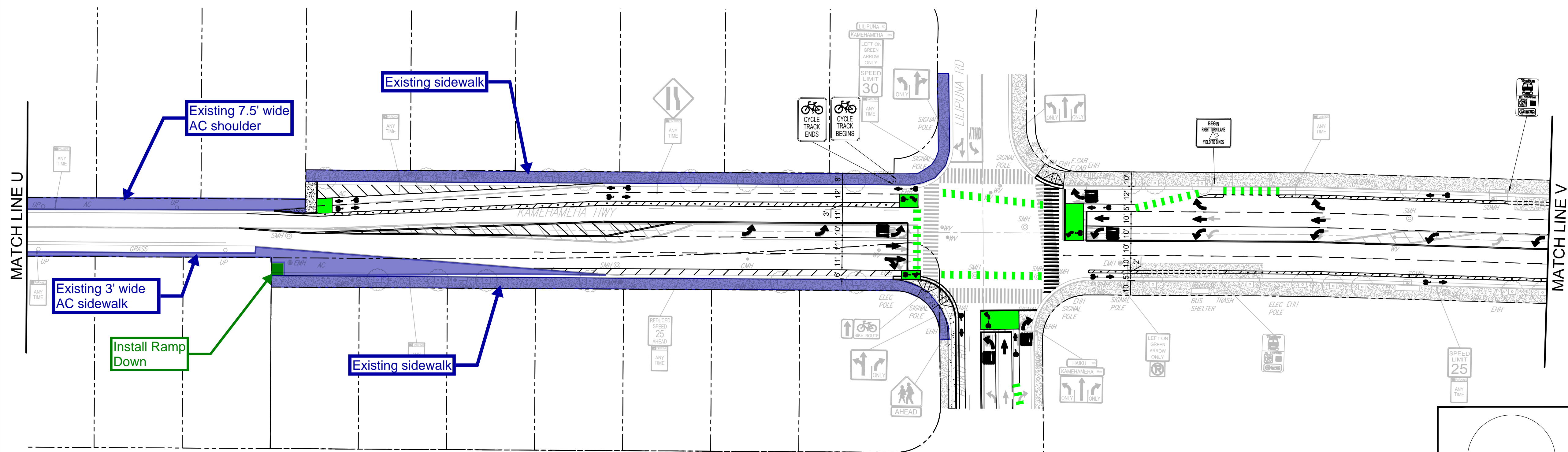
FILE	POCKET	FOLDER	NO.

W:\05 - Streets\Streets\0177\03\0104_Graphics\CAD\Sheets - Kamehameha Highway - Kamehameha Hwy to Kamehameha Bay 10.dwg
 10/10/2019 10:10:10 AM



- LEGEND**
- Opportunities for roadway shoulder improvements (3' wide max where feasible unless otherwise noted)
 - Existing Sidewalk and Shoulder
 - Striping Improvement
 - Concrete Sidewalk

KAMEHAMEHA HIGHWAY
 SCALE: 1"=40'



KAMEHAMEHA HIGHWAY
 SCALE: 1"=40'

REVISION	DATE	BRIEF DESCRIPTION	BY	APPROVED

Expiration Date: 4/30/20
 THIS WORK WAS PREPARED BY ME OR UNDER MY SUPERVISION AND CONSTRUCTION OF THIS PROJECT WILL BE UNDER MY OBSERVATION.

DEPARTMENT OF TRANSPORTATION SERVICES
 CITY AND COUNTY OF HONOLULU
COMPLETE STREETS PLANNING
REHABILITATION OF STREETS UNITS 73A, 73B, AND 73C
 OAHU, HAWAII
KAMEHAMEHA HIGHWAY - 11
ALTERNATIVE 2

ENGINEER: LN/JS DATE: October 2019
 DRAFTSMAN: - SCALE: AS NOTED
 CHK BY: LN REF: -

C-013

BELT COLLINS HAWAII, LLC

FILE	POCKET	FOLDER	NO.

W:\03_Schematic Streets\03177\030104_Graphics\CAD\Sheets - Kamehameha Highway - Kamehameha Hwy to Kaneohe Bay 11.dwg
 11/11/2019 10:14:41 AM
 W:\03_Schematic Streets\03177\030104_Graphics\CAD\Sheets - Kamehameha Highway - Kamehameha Hwy to Kaneohe Bay 11.dwg