

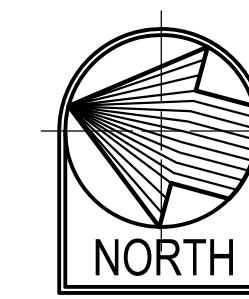


©2021 Belt Collins Hawaii LLC. MDTs Complete Streets/2017.71.0300/159.ai A 18May2021.13



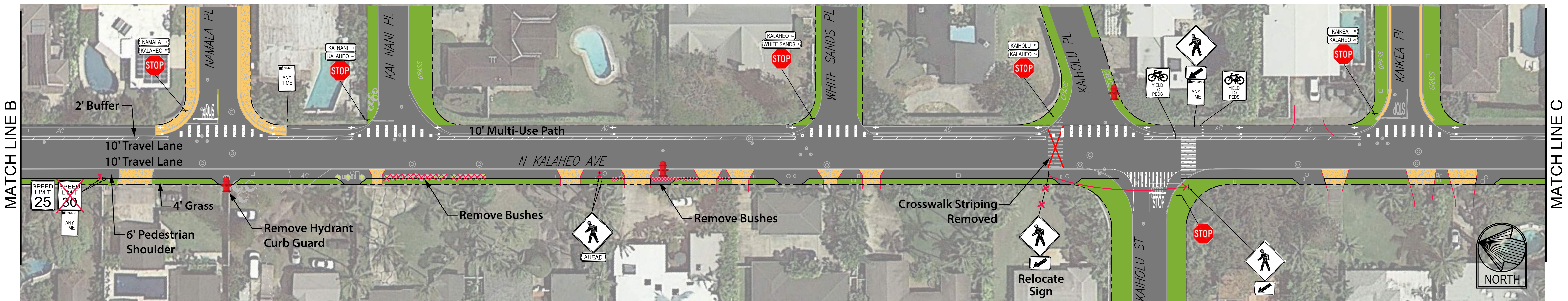
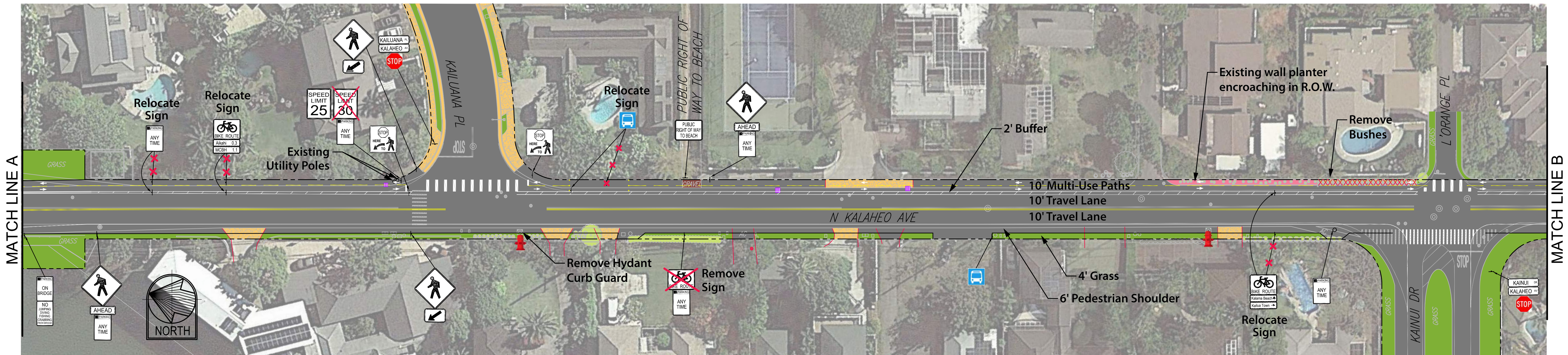
LEGEND

- | | | | | |
|------------------------|----------------------------|-------------------|-----------------------|------------------------|
| Fire Hydrant | New Concrete Pavement | Landscaping Strip | Existing Catch Basin | Shoulder with Driveway |
| Roadway with Crosswalk | Existing Concrete Pavement | Existing Tree | Relocated Catch Basin | Curb Ramp |
| Decorative Pavement | Existing Drain Inlet | 1' Raised Buffer | | |





©2021 Behr Collins Hawaii LLC. MDTs Complete Streets/2017.71.0300/160.ai A 17/May2021 6



LEGEND

- | | | | | | | | | | |
|--|--------------|--|----------------------------|--|------------------------|--|-------------------|--|-------------------------------|
| | Stop Sign | | New Concrete Pavement | | Shoulder with Driveway | | Landscaping Strip | | Planter Encroaching R.O.W. |
| | Bus Stop | | Existing Concrete Pavement | | Existing Drain Inlet | | Existing Tree | | Existing Bushes to be removed |
| | Fire Hydrant | | Roadway with Crosswalk | | Gravel | | | | |

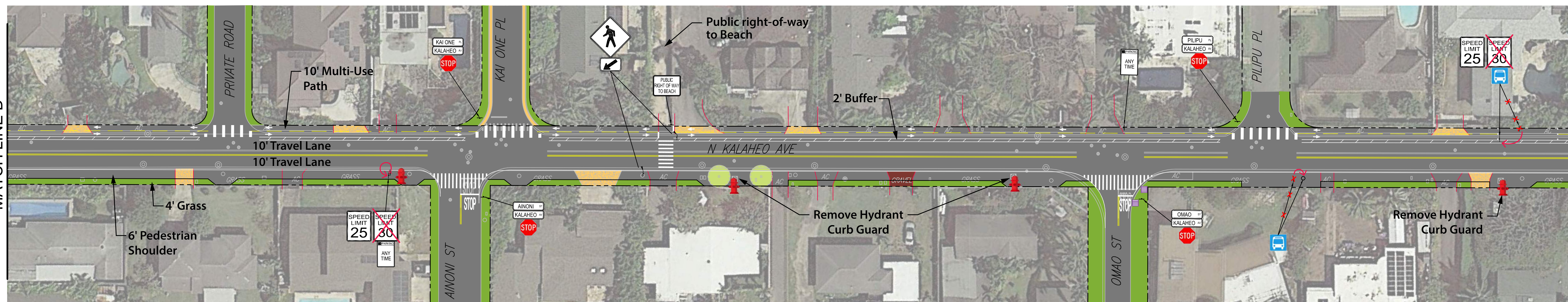
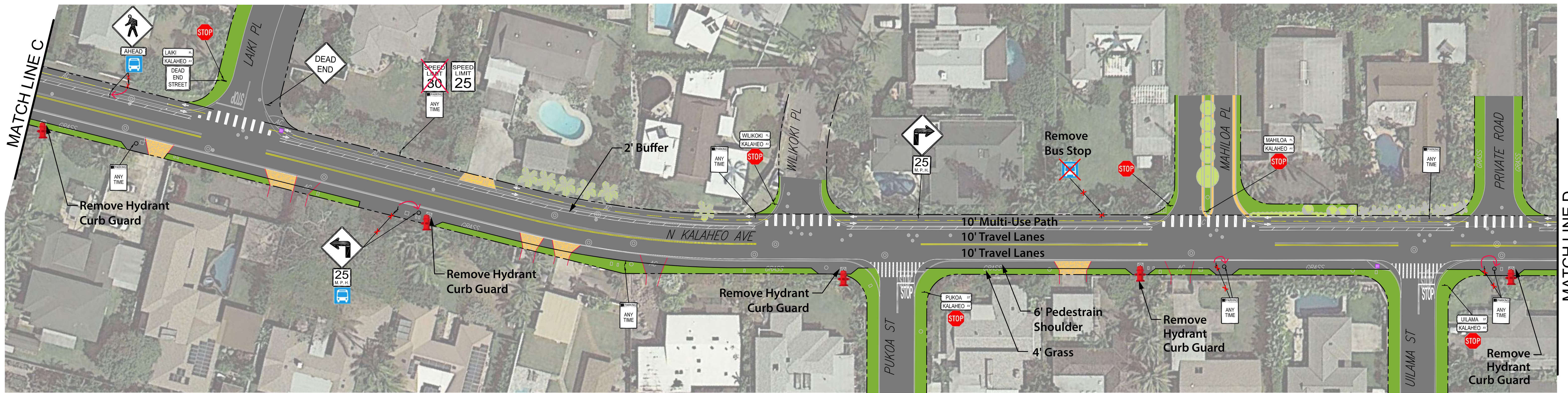


Honolulu COMPLETE STREETS KAILUA

NORTH KALAHEO AVENUE: Laiki Place to Pilipu Place

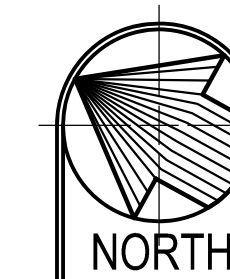


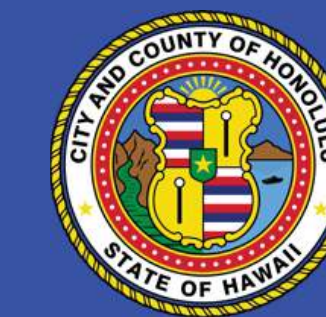
©2021 Behr Collins Hawaii LLC. MDTs Complete Streets/2017.71.0300/161.ai A 17/May2021 6



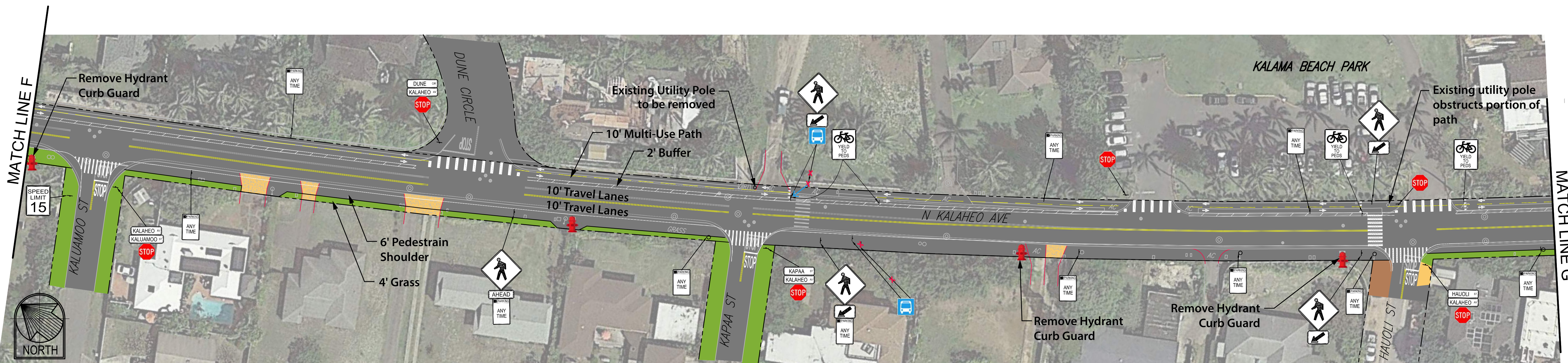
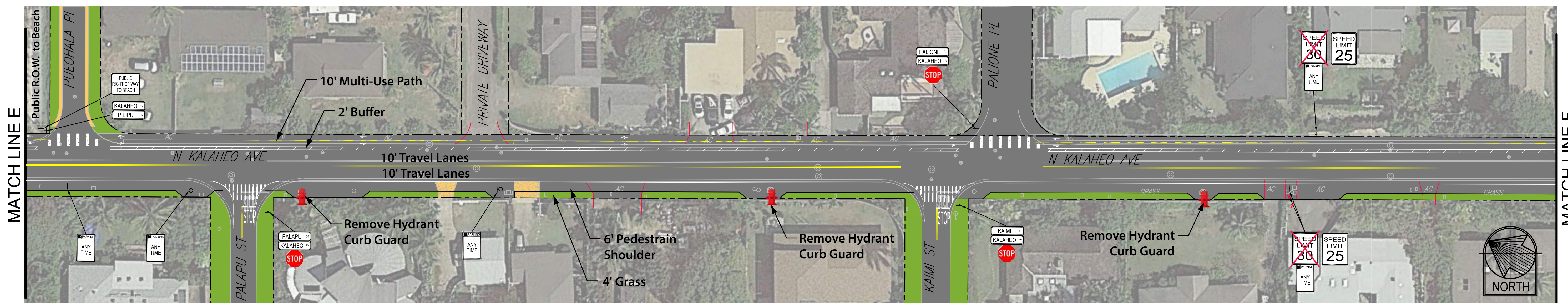
LEGEND

- | | | | | | | | |
|--|--------------|--|----------------------------|--|------------------------|--|---------------|
| | Stop Sign | | New Concrete Pavement | | Shoulder with Driveway | | Existing Tree |
| | Bus Stop | | Existing Concrete Pavement | | Existing Drain Inlet | | Gravel |
| | Fire Hydrant | | Roadway with Crosswalk | | Landscaping Strip | | |





©2021 Beth Collins Hawaii LLC. MDTs Complete Streets/2017.71.0300/162.ai A 17/May2021 Z



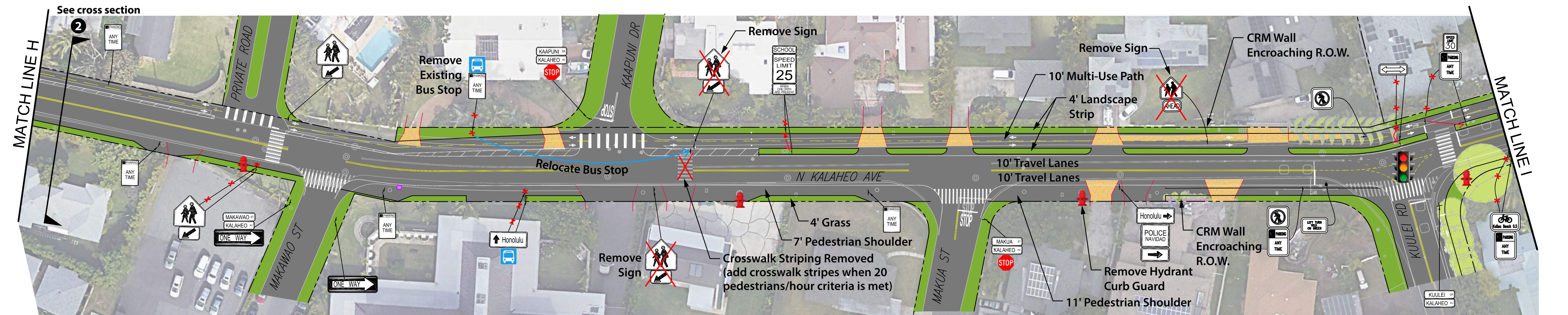
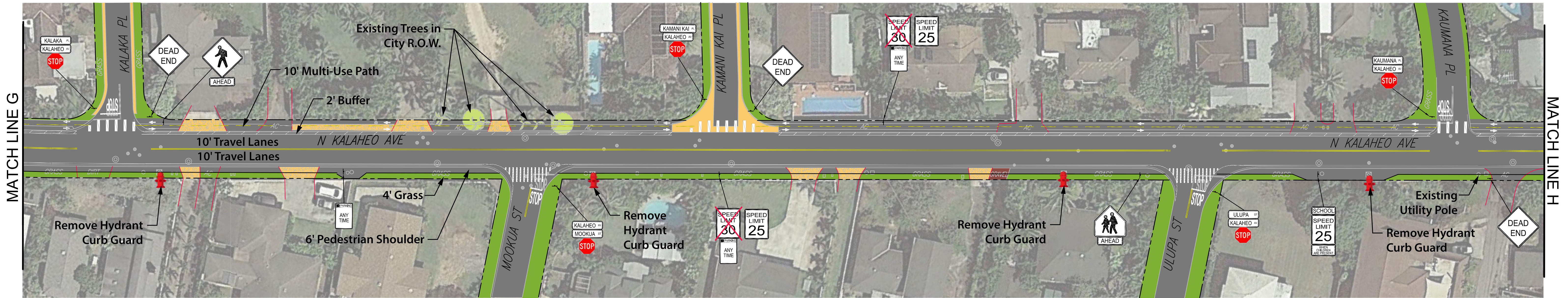
LEGEND

- | | | | | | | | |
|--|--------------|--|----------------------------|--|------------------------|--|---------------|
| | Stop Sign | | New Concrete Pavement | | Shoulder with Driveway | | Existing Tree |
| | Bus Stop | | Existing Concrete Pavement | | Existing Drain Inlet | | Dirt |
| | Fire Hydrant | | Roadway with Crosswalk | | Landscaping Strip | | |



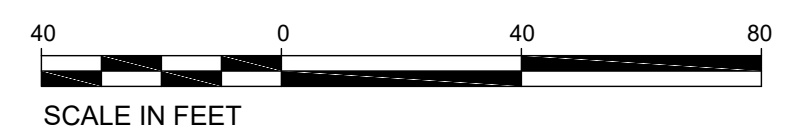


©2021 Behr Collins Hawaii LLC. MDTs Complete Streets/2017.71.0300/163.ai A 17/May2021.11



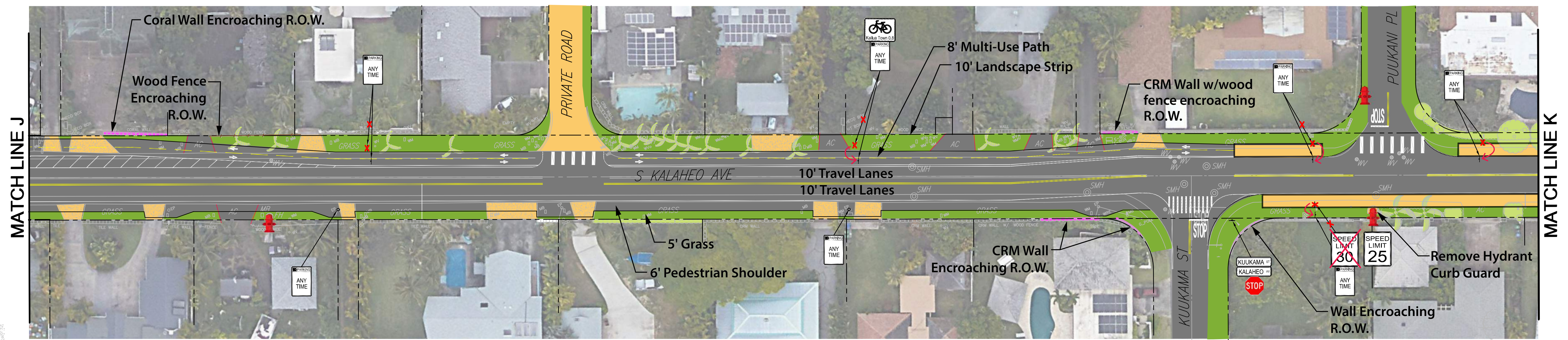
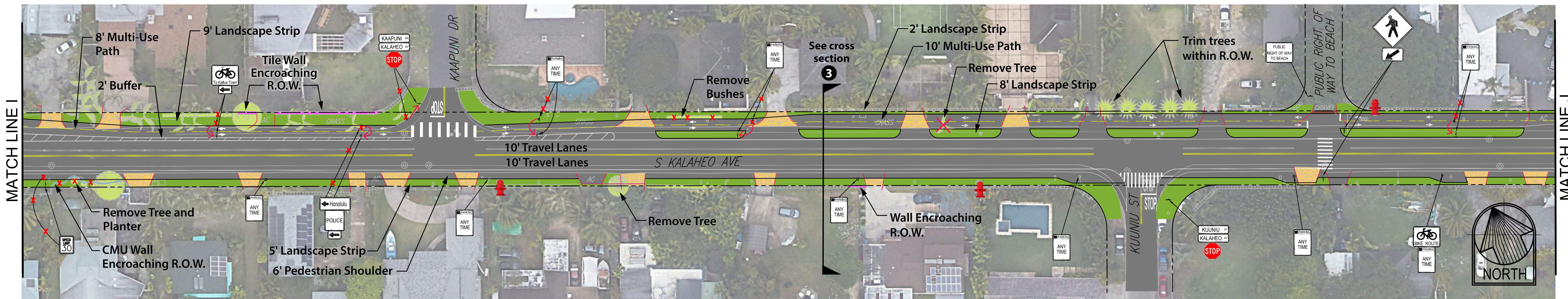
LEGEND

- | | | | | | | | | | |
|--|-------------------------|--|----------------------------|--|------------------------|--|----------------------|--|-------------------------|
| | Signalized Intersection | | Fire Hydrant | | Shoulder with Driveway | | Landscaping Strip | | Wall encroaching R.O.W. |
| | Stop Sign | | New Concrete Pavement | | Roadway with Crosswalk | | Existing Drain Inlet | | |
| | Bus Stop | | Existing Concrete Pavement | | Existing Tree | | Gravel | | |



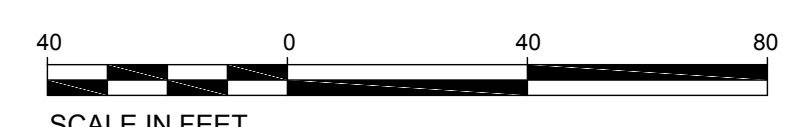


©2021 Beth Collins Hawaii LLC. MDTs Complete Streets/2017.71.0300/164.ai A 20May2021 2



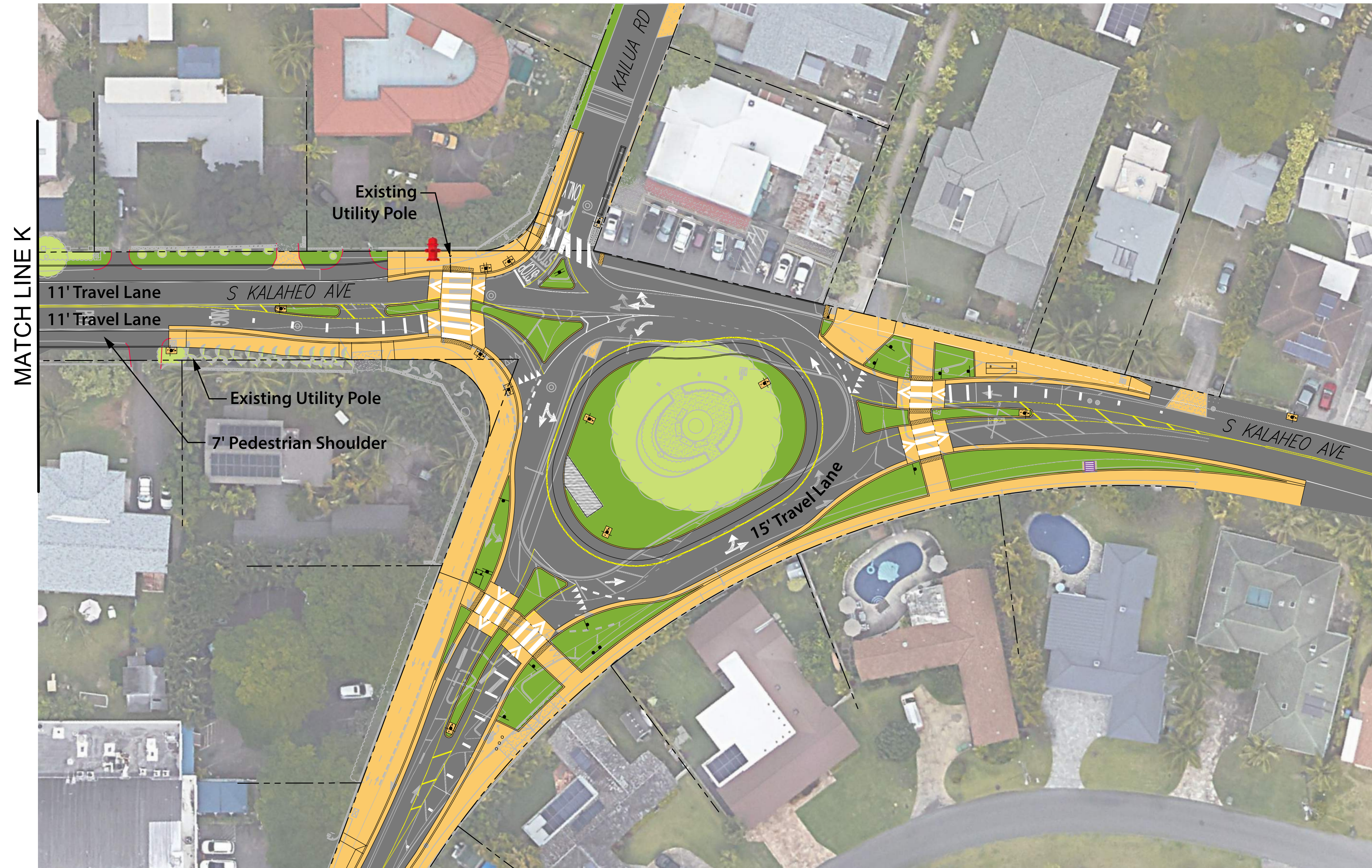
LEGEND

-  Signalized Intersection
-  Fire Hydrant
-  Roadway with Crosswalk
-  Existing Tree to be removed
-  Stop Sign
-  Existing Concrete Pavement
-  Landscaping Strip
-  Wall Encroaching R.O.W.
-  Shoulder with Driveway
-  Existing Tree





©2020 Beth Collins Hawaii LLC. MDTs Complete Streets/2017.71.0300/165.ai A 10Mar2020 B



LEGEND

- | | | | | | |
|--|----------------------------|--|---------------------------------------|--|-------------------|
| | Stop Sign | | Sidewalk with Driveway | | Existing Tree |
| | Fire Hydrant | | Roadway with Crosswalk and stop lines | | Landscaping Strip |
| | Existing Concrete Pavement | | Speed Table | | Gravel |

