



Honolulu

COMPLETE STREETS

PENSACOLA STREET



Ala Moana / Kakaako Neighborhood Board No. 11
May 24, 2022

PROJECT LOCATION



- **Pensacola Street**
 - Segment 1: From Waimanu Street to Kapiolani Boulevard
 - Segment 2: From Kapiolani Boulevard to South King Street

BACKGROUND

Oahu Pedestrian Plan

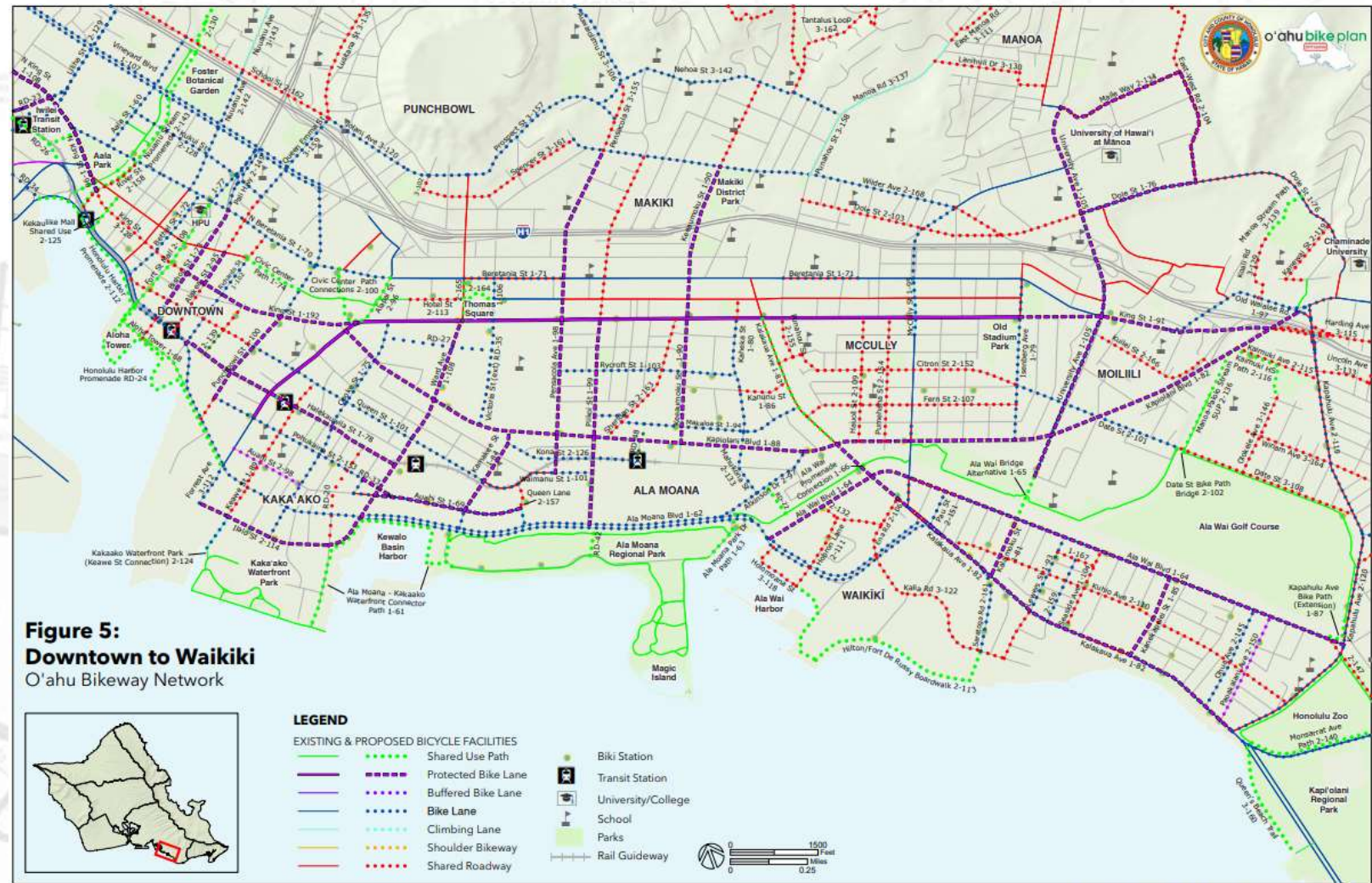
- Tier 1 Priority Missing Walkway



BACKGROUND

Oahu Bike Plan

- Priority 1 Protected Bike Lane

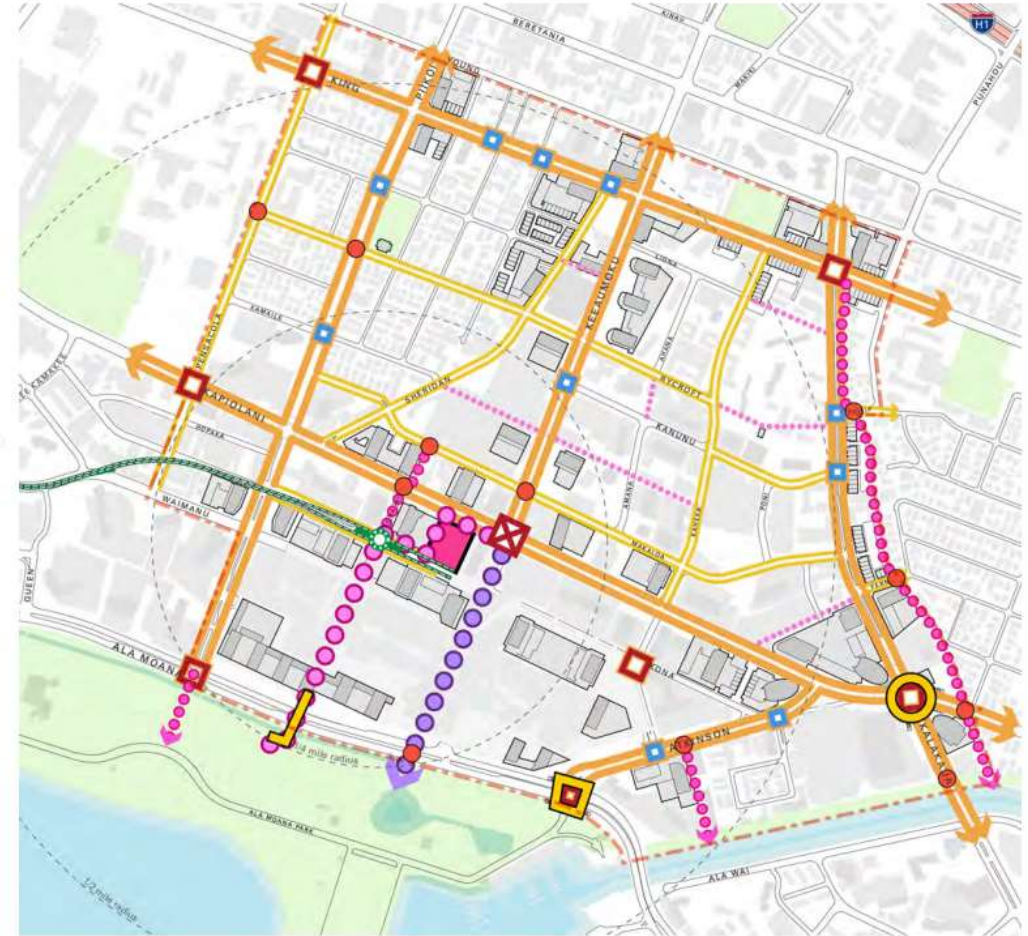
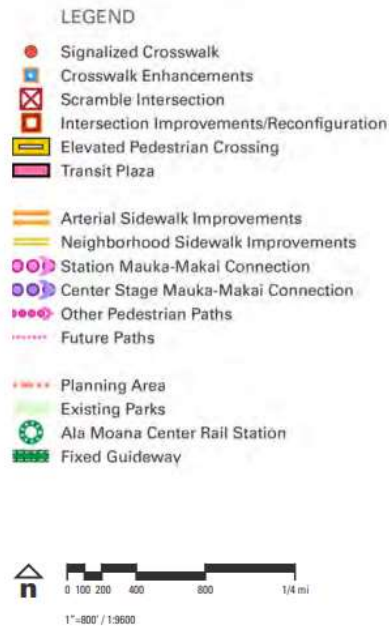


BACKGROUND

Ala Moana Neighborhood Transit-Oriented Development Plan

- Sidewalk improvements
- Intersection improvements
- Protected bike lane

FIGURE 3-11: PROPOSED PEDESTRIAN IMPROVEMENTS



BACKGROUND

Urban Core Complete Streets Project

- Extensive planning process: data collection, analysis, and community outreach
- Resulted in new two-way bikeway from Wilder Avenue to Kapiolani Boulevard implemented in 2020
- Prepared high-level plans for improved walkways

Honolulu
COMPLETESTREETS

URBAN CORE:
Ward Avenue &
Pensacola Street

Community Meeting
Explore and comment on proposed protected bikeways
for **Ward Avenue** and **Pensacola Street**!

We need *Your* input !

Thursday, March 22
6:00pm
Neal S. Blaisdell Center
Pikake Room
777 Ward Ave

Rendering of Ward Avenue
at Neal Blaisdell Center

Rendering of Pensacola Street
at Hycourt Street

www.honolulu.gov/completestreets
Email | csayers@honolulu.gov

If you require special accommodations to attend this event, please
contact us at (808) 628-5961 or mwhite@ssfm.com at least three (3)
days prior to the event.

PROJECT PURPOSE

- Improve safety and comfort for people walking, biking, taking transit, and driving
- Maintain and enhance pedestrian crossings
- Complete critical missing sidewalks
- Complete critical missing bikeways



THE PROJECT



Improvements Under Consideration

- Segment 1: Waimanu Street to Kapiolani Blvd
 - Complete missing sidewalks
 - Extend protected bikeway to Waimanu Street
 - Add missing crosswalk on the Diamond Head side of the intersection with Kapiolani Boulevard

SEGMENT 1: WAIMANU ST TO KAPIOLANI BLVD



Interim Design

- Create a continuous protected pedestrian pathway
- Reconfigure existing shoulder and parking between Kapiolani Blvd-Waimanu St
- Reconfigure existing lanes at Kapiolani Blvd approach to provide a share left/thru lane
- Extend makai-bound bike lane

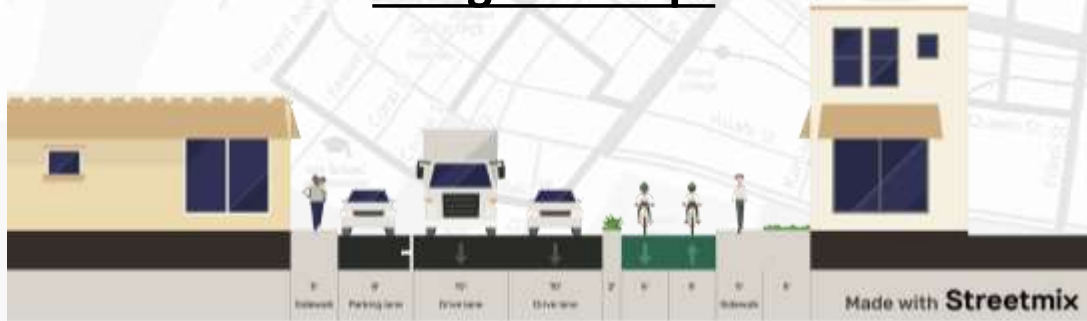
SEGMENT 1: WAIMANU ST TO KAPIOLANI BLVD

Existing Configuration



[Hopaka Street to Kona Street (50' ROW)]

Design Concept



Full-Build Design

- Construct missing sidewalks
- Reconfigure on-street parking
- Extend the existing two-way protected bikeway across Kapiolani Boulevard to Waimanu Street
- Add missing crosswalk at Kapiolani Boulevard



THE PROJECT



Improvements Under Consideration

- Segment 2: Kapiolani Blvd to South King Street
 - Pedestrian crosswalk upgrades to improve safety and maintain marked crossings
 - Lane reconfiguration to reduce speeding and improve safety
 - Parking configuration changes to retain inventory

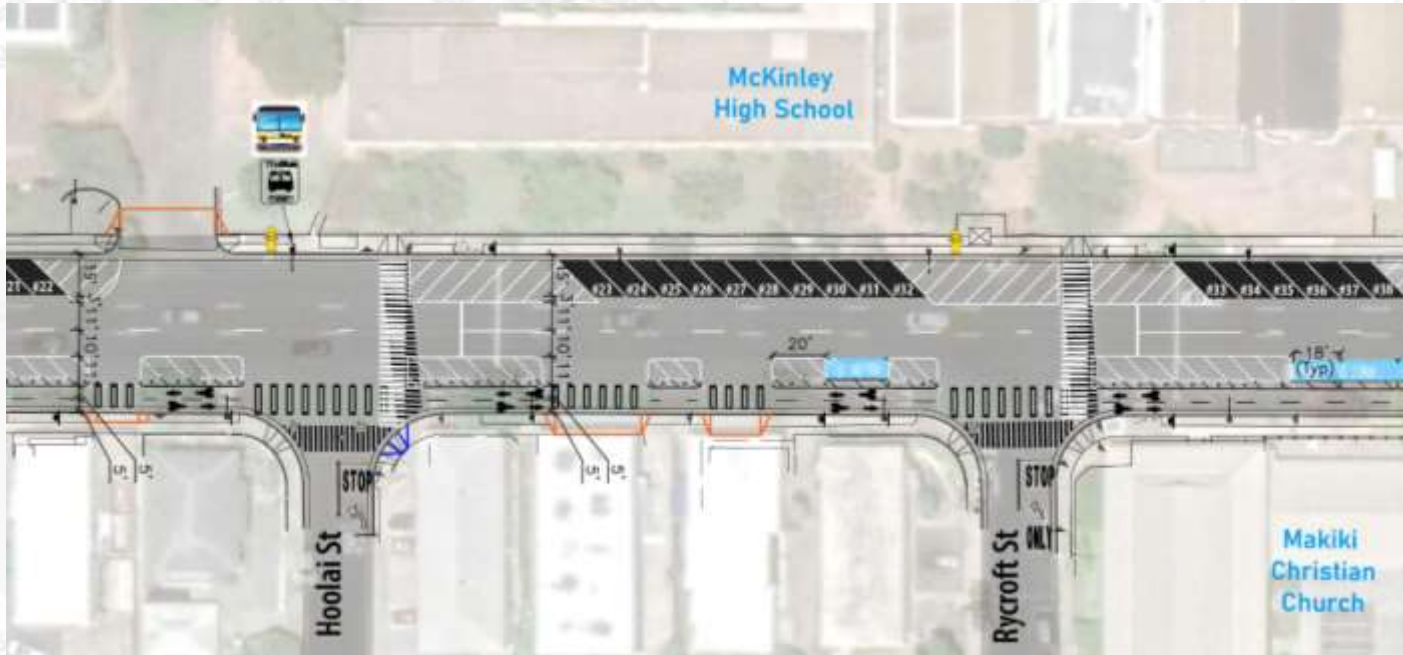
SEGMENT 2: KAPIOLANI BLVD TO SOUTH KING ST



Design Option 1

- Uncontrolled pedestrian crosswalks at Elm St, Rycroft St, Hoolai St, and Kamaile St don't meet current crosswalk standards
- Installation of Rectangular Rapid Flashing Beacons and medians
- Doesn't address speeding

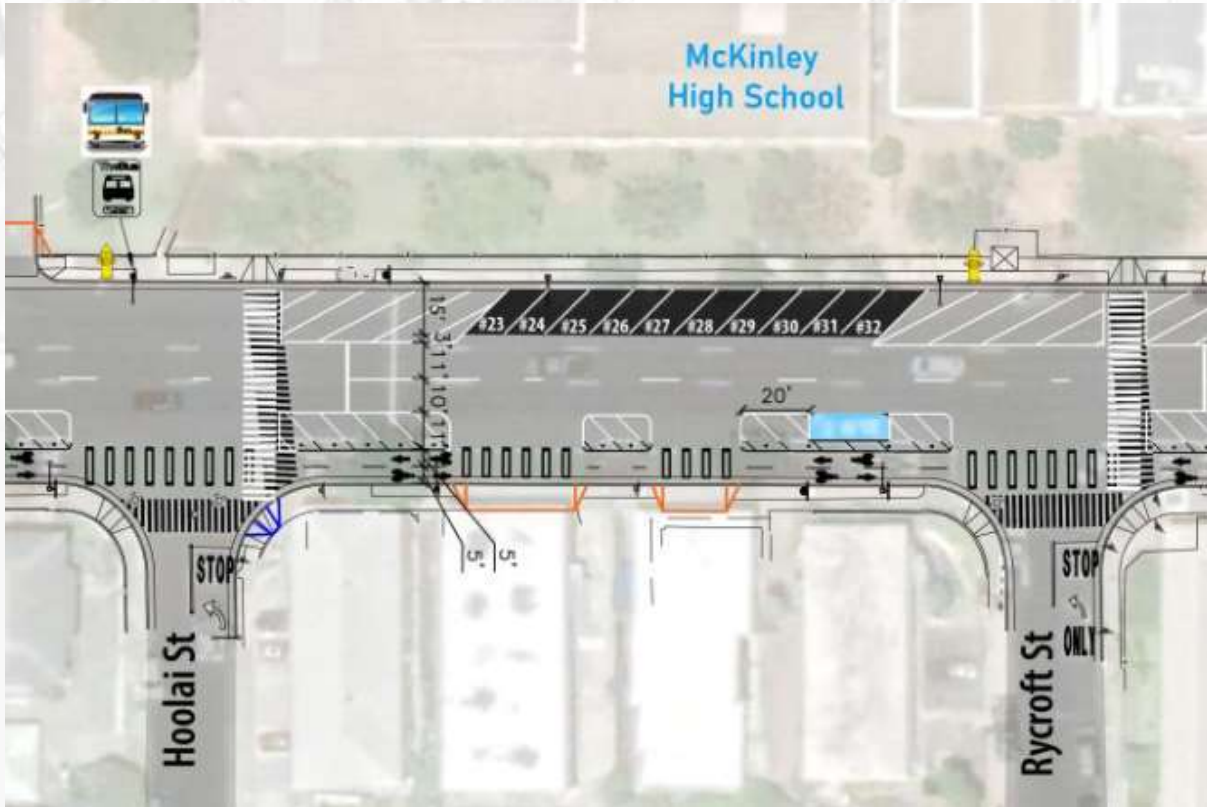
SEGMENT 2: KAPIOLANI BLVD TO SOUTH KING ST



Design Option 2A

- Reduce Pensacola Street to two lanes between King St and Kamaile St
- Pensacola St is currently significantly overbuilt. Reducing to 2 lanes will significantly improve safety at the pedestrian crossings and control speeding.
- Maintains vehicular operations at Level of Service A
- Extra space allows for angled parking

SEGMENT 2: KAPIOLANI BLVD TO SOUTH KING ST



Design Option 2B

- Reverse-in angle parking
- Improves operation of exiting parked cars
- Less common (only Oahu example on Ulune St in Aiea)

PLANNING PROCESS



We are here

PUBLIC OUTREACH PROCESS

- Building on extensive public outreach conducted for the 2017-2018 Pensacola Street planning
- Direct outreach to adjacent landowners and tenants
- Presentations to the Ala Moana-Kakaako Neighborhood Board, elected officials, and community organizations
- Comments accepted through the website and email listed below:

<https://www.honolulu.gov/completestreets/urbancore>

Email: completestreets@honolulu.gov



Honolulu
COMPLETESTREETS

QUESTIONS?

Contact Information

Daniel Alexander

completestreets@honolulu.gov

Phone: (808) 768-6652



<https://www.honolulu.gov/completestreets>



Find us on Instagram
[@hnl.completestreets](https://www.instagram.com/hnl.completestreets)



Find us on Facebook
[@hnlcompletestreets](https://www.facebook.com/hnlcompletestreets)
City and County of Honolulu
Complete Streets Program