

HONOLULU LILIHA AND NUUANU COMPLETE STREETS COMMUNITY MEETING #2 SUMMARY

Time: 6:30pm- 8:30pm

Date: May 22, 2018

Location: Mae Mae Elementary School Cafeteria

Event Description

The purpose of this community meeting was to provide a follow-up to the community outreach that occurred in late 2017, during which initial draft concepts were shared through community meetings and online. Revised concepts and new alternatives had been prepared for Nuuanu Avenue and Liliha Street based on hundreds of community comments and technical input. At this meeting, the project team shared the revised concepts and invited input on the preferred alternatives for the Nuuanu and Liliha corridors. Attendees at the meeting were encouraged to provide input via the question and answer session, the open house/plan review, and the comment cards. Stakeholder input received at the meeting is described below.

Project Team Attendees

DTS: Kelly Akasaki, Jack Patterson

SSFM: Melissa White, Sue LeBrun, Carlos Kelton, Lulu Chun, Abbey Seitz

Stakeholders

1. Aaron Lau
2. Alah Kato, 15 Craigside
3. Anne Luu
4. Aric Harris
5. Atwin & Cynthia Char
6. Audrey Ahara
7. Audrey Lee
8. Blaine Tsugawa
9. Brad Higgins, Brookside
10. Brenda G.
11. City Council Member Carol Fukunaga, District #6
12. Chad Taniguchi, HBL
13. Corinne Ching
14. David Takara
15. Debra Beck
16. Derek Poentis



17. Derek Stugelmeyer
18. Dianne Ida
19. Dustin Suekawa
20. Elaine Katsuyoshi
21. Evelyn Char
22. Frank Smith, HBL
23. Gwen Sinclair
24. Henry Pang
25. Howard Yuen
26. Jade Katashima
27. James Iwamura
28. Jim Wong
29. Joanne Ninomiya
30. John Hart
31. Joyce Tsugawa
32. Julie Tamayori
33. Kaipo Cabral
34. Kaponu Ryan
35. Kate Pawe
36. Keith Hasagawa, ATA Hawai'i
37. L. Lee,
38. Lestor Inouye
39. Lynell Yum
40. Lynnette Leger
41. Marjorie Meyer
42. Mark Dos
43. Marry Huynh, Office of Council Member Carol
Fukunaga
44. Masaru Abe, 15 Craigside
45. Mela Kealoha-Lindsey, Neighborhood Board #14
46. Miles and Susan Wong
47. Myrna Sato
48. Patrick Karjala
49. Phil Nernez
50. Radiant Cordero, Office of Council Member Joey
Manahan
51. Rasslyn Harris
52. Raymond Kim
53. Reiko Harris
54. Renee Yanagisava
55. Robert Arakaki
56. Robert Masuda, 15 Craigside
57. Ron Pike
58. Russel Kator
59. Sam King
60. Sandra Wong, Resident
61. Shirley Soma
62. Stasha Barcelona
63. State Senator Karl Rhoads, District #13
64. Stephanie Hashimoto
65. Sylvia Young, Neighborhood Board #12
66. Takeshi Ohno
67. T.C. Brady
68. Terranee Arashiro, ATA Hawai'i
69. Tom Strickland
70. Von & Judy Kaneshiro
71. Zach Stoddard



Agenda

6:30- 6:35pm Introductions and Welcome

6:35- 7:05pm Presentation

7:05- 7:40pm Question and Answer Session

7:40- 8:30pm Open House / Plan Review

Question and Answer Session

Following the meeting's presentation, attendees were given the opportunity to ask questions of the project team pertaining to the project. The question and answer session is summarized below.

1. **Q:** How was it determined to reduce from four to two lanes?

A: We looked at volume and road capacity. We also looked at pedestrian safety aspects – we do not want pedestrians crossing four lanes of traffic.

2. **Q:** To what extent are complete streets written into law? Are there a different options to complete streets? What triggers complete streets improvements?

A: When we touch the street we need to consider all modes. We don't need to implement all complete street improvements, but we must consider them. Complete Streets was not approved until 2016.

3. **Q:** I'm with HBL, we encourage and advocate for road safety. The Complete Streets Ordinance enables safety for all users. How can we say we're not going to provide certain complete street improvements?

A: We are considering all modes. We are proposing to widen sidewalk to allow bicycling in residential areas. Sharrows will also be provided.

4. **Q:** I talked to UPS and they said it's significantly more difficult to park in this neighborhood. I suggest we do a full simulation to let everyone experience the full impacts of Complete Streets (will cost much less), then ask community for poll of they do and do not like.

A: Our plans are only conceptual. When they go to DDC we may decide to lay out the improvements for a trial run.



5. **Q:** How much is this contract?

A: The study is \$450,000 (Both Nuuanu and Liliha). It includes traffic counts and analysis, topography, and right of way surveys, as well as the outreach and 30% plans.

6. **Q:** Who makes final decision?

A: The City has core team that will review and make final decision based on community input.

7. **Q:** How are we going to pay for this?

A: This will be done when the road is resurfaced. This is part of the regular annual budget.

8. **Q:** Other cities pave their streets with concrete not asphalt, is Honolulu considering this?

A: The City not moving forward with concrete (it is very expensive).

9. **Comment:** There is more beyond numbers. One of the pedestrian fatalities was with a drunk driver. We like four lanes and only 1% of traffic is bicycles. Bicycles are the most common cause in the ER. We have a lot of other users.

10. **Q:** Flashers make more sense. It doesn't make sense to put bikers in the same lane as cars. How many bicyclist actually use King St?

A: We can get the data for King St. Reducing speed and reducing lanes and adding medians (needed for crosswalks) will make it safer for pedestrians and bicyclists.

11. **Q:** What do the EMS/firefighters have to say about the proposed plan?

A: They are in favor of speed reducing strategies. They don't have any issues with Complete Streets improvements.

Written Input Submitted on Comment Cards

Throughout the meeting, attendees were given the opportunity to provide input via comment cards. 23 comment cards were received in total; 6 comment cards were in general support of the project or project design elements; 5 comments were in opposition to the project or project design elements; 12 comments were neutral. Received comments are transcribed below.

Support (6 Comment Cards)

- 1) Definitely want as many trees as possible as temperatures are breaking records every year! Due in part to makai development in Kakaako 2) Love the roundabouts! They are the most efficient and encourage walking/use of city park 3) Landscaping is great! So healthy. Diabetes is extremely high in Liliha and we need families to walk. Supporting the small mom and pop shops creates community!
- Nuuanu: prefer alternative 1 or 2 (with bike lanes). Do like expanded sidewalks. What about safety? Why are we prioritizing street parking over the other needs?
- Liliha could really use some beautification – underground utilities and plant more trees. Also, slow the traffic. Make our neighborhood more walking and biking friendly. Let's have red light ticketing cameras. Streets are for travel and not for parking. The most bike friendly thing: smooth pavement.
- We forget the whole picture which is safety for all users in the priority of pedestrians, against cars and parking. If you look at the ratio of condo owners to renters, majority are renters. Attrition will bring new tenants with fewer cars.
- I love the roundabouts! As someone who is used to live near the Keeaumoku roundabout, I can definitely say that the roundabouts with more trees makes it ok when I have to walk Mauka, up a hill, because there's shade and makes it feel safer to wait for the bus. I favor Nuuanu Alternative #3, but I do not like that all intersections will be signalized. I like Liliha Street Alternative #2, but I'd like to see a center turn lane. Also, I'd like to include roundabout at a bigger intersection with more space (such as Liliha at Kuakini).
- I prefer Nuuanu Alternative 3. Afternoon traffic moves from town up to Ward. Mauka to Judd on Nuuanu can be thick, I believe that the Diamond Head side going up Mauka should be a tow away zone in afternoon. Buses, bikes, and right turns on Judd. Better sidewalks please!

Neutral (12 Comment Cards)

- Bike lanes make no sense to me except on a widened sidewalk. I live at 2040 Nuuanu, and I see the traffic daily from my 19th floor condo. I cannot imagine Nuuanu without 4 lanes and only 2 lanes. Traffic is heavy. I feel that 1 roundabout or left turn coming down to town from mauka makes sense at the intersection of Pauoa and Nuuanu. I also support widening sidewalks on one side but not both. We need sidewalks on Judd Street.



2. One item I would like addressed is the left turn from Liliha Street into the Foodland/McDonalds parking lot. This is an issue as many people make unsafe turns in this area. It would be good to block left hand turns in this area for pedestrian and vehicle safety. It would be good to have loading zones during business hours.
3. Slow down speeding traffic with speed humps. Keep four lane structure, just add straight/left turn arrow lights at Kuikui and Pauoa. Moving parking further up Nuuanu Ave will increase vehicle break ins. Stop the tour buses from using Nuuanu (as an alternative route to School St to enter H-1). Need a cross-corridor sidewalk on Judd between between Liliha and Nuuanu. Bikes about 1 percent of traffic flow. 1 bike observed in 4 hours = absence of need.
4. Why are we not look at slowing traffic? Lots of these designs are for safety, which is largely impacted by vehicle speed. Answer: road should be mandated to 25 mph. Widen the sidewalks too.
5. I think people were confused between the three alternatives and didn't know which to pick.
6. Parking on Nuuanu Street between School and Kuakui Streets proposed to Ewa side of street. Most people live on Diamond Head side – this may increase jaywalking. Traffic during rush hour in the morning heading into town backs up in both lanes on Nuuanu. Trash on Liliha Street for narrow lanes are usually piled on the sidewalk. You should lower street lights on Nuuanu so they are not in the big monkeypod trees. Bicycles could ride on the wider sidewalks.
7. In favor of alternative 3 on Nuuanu Ave – no bike lanes or roundabouts.
8. Is it possible to put it all way crossing on Nuuanu Ave?
9. Dedicated left turn lanes will facilitate car traffic movements. However, can the left turn arrow be modified so that traffic will only be allowed to make left turn if there is no oncoming traffic? This would alleviate traffic for vehicles wishing to make a left turn.
10. Need to include the negative aspects of each plan. One of the plans should be keeping the streets as they currently exist. A trial run is a very good idea.
11. Critical thinking leads to other possible conclusions. Speed is set too low. Pedestrians need to be more careful. How will this be paid for? Does this mean our property taxes will increase for assessments be made to pay for the changes?

Opposed (5 Comment Cards)

1. No bike lanes. I see two-to-three bikes as I walk to and from work and lots of cars. It does not make sense to take away more driving lanes and lose parking spaces. Getting out of driveways is already difficult. Adding bikes to the mix only makes it more dangerous. Improve street surfaces and sidewalks – that's all that's needed. Not more trees. If the plan is to make it like

Kailua, that is ridiculous. We have way more traffic on Nuuanu Ave. No Roundabouts. On the bike lanes on King St the bike riders use sidewalk more than bike lane.

2. Badly conducted meeting. You are just wearing us out. Who's paying for your elaborate plans? Do not take any parking spaces along Nuuanu. I feel sorry for merchants on Liliha Street. City transportation lady explained things well.
3. Ultimate intention is to connect with Biki bikes.
4. Street parking is important not only for parking but also delivery for small stores and businesses. Keep biking to sidewalks, no street bike lanes. The roundabout at Liliha and Wyllie will not work due to all cars getting bottle necked trying to get into Mae Mae School. Cars travelling north on Liliha will turn right on Wyllie, cars travelling south will turn on Wyllie. Cars travelling straight on Wyllie will continue. All three flows of traffic going into Mae Mae with no lights to force two of the lanes to let the other through will be a mess and a rare exception to roundabout improving flow. Flow will be worse.
5. Personally, I don't like roundabouts. I've experienced them in Europe.

Comments on Preliminary Concept Designs:

Participants had the opportunity to study and provide comments on large maps of the revised concept designs for Liliha Street and Nuuanu Avenue during the open house/plan review. Facilitators at each station assisted with recording comments on post-it notes placed on the maps. Comments provided were tabulated according to street, topic, and whether they were general or location-specific. The comments received at the open house/plan review are included on the tables on the following pages.

Liliha or Nuuanu		General/ not location specific	Intersection/Location	Parking	Pedestrian	Crosswalks and crossings	Bike Lanes	Traffic & Signals	Roundabout	Sidewalks	Character/ Aesthetics	Speed	Safety	Bus Stops	Comments
Liliha	Alternative 1	General		X											How can businesses receive deliveries with elimination of parking. There will be average 6 times deliveries per day by 30'-40' long delivery trucks
Liliha	Alternative 1	General												X	Is traffic going to stop whenever at the bus stop?
Liliha	Alternative 1		Ewa side of Liliha St at Ihe St	X									X		Street parking blocks the view of on coming cars and bikes
Liliha	Alternative 1		Ekekela Pl											X	Keep existing bus stops, it's a long stretch to nearby bus stops
Liliha	Alternative 1		Wyllie St						X						No Roundabout, Fire department will have difficulties passing through the intersection
Liliha	Alternative 1	General					X	X							Bike lane with reduction of lanes for cars would probably kill business
Liliha	Alternative 1		Judd St						X						Roundabout at Judd not Wyllie
Liliha	Alternative 1		Judd St			X									At Judd and Bachelot, put school crossing at pre-school
Liliha	Alternative 1	General												X	Did you ask transit department about the consolidation of bus stop
Liliha	Alternative 1	General					X	X							We need to keep 4 lanes for vehicles. Bicyclist can share the lane with cars, reducing lanes would make the street more dangerous because impatient drivers would harass and/or pass illegally
Liliha	Alternative 1		North School St					X							Keep center left turn lane to reduce conflict between through/left turn traffic to McDonald's
Liliha	Alternative 1	General				X							X		concerned about poor lighting at crosswalks and poorly painted crosswalk.
Liliha	Alternative 1		Judd St			X							X		Consider install a crosswalk at Judd St between Liliha and Nuuanu Ave, it's not a safe street for pedestrians.
Liliha	Alternative 1		St Francis Health System										X		Better lighting at crosswalk
Liliha	Alternative 1		Halapia Pl	X											Concerned about losing parking
Liliha	Alternative 1	General		X											Community is changing, more tenants who would rely on street parking. Please consider retaining existing parking, or do further study on usage
Liliha	Alternative 1	General		X											Mega houses which won't provide parking are being built off Liliha
Liliha	Alternative 1	General											X		Bicyclists need to be educated
Liliha	Alternative 1	General							X				X		Please consider roundabout. I came from Switzerland where there are a lot of them and it is a lot safer for pedestrian, cut the speed of cars and greatly improve the flow
Liliha	Alternative 1		Wyllie St						X						Alternative to roundabout would cause congestion from Alewa and Puunui
Liliha	Alternative 1	General		X											Would like to have all parking stalls removed, people park too close to driveways, affects visibility
Liliha	Alternative 1	General				X									In school area use "State Law Yield Pedestrian" sign
Liliha	Alternative 1	General				X							X		Lighting at crosswalk is an immediate concern, all of them
Liliha	Alternative 1		Kuwanai Ln			X									Removed the Mauka crosswalk to eliminate conflicts with left turning vehicles off Kuwanai Ln. The Makai crosswalk looks good
Liliha	Alternative 1	General						X							People don't know how to use center-turn lane
Liliha	Alternative 1	General					X								Currently don't feel safe biking on Liliha
Liliha	Alternative 1		Bachelot St											X	Agree with removing bus stop between Bachelot and Ehako
Liliha	Alternative 1		Analu St											X	Makai bound bus stop Mauka of Analu St might not be needed
Liliha	Alternative 1		Wyllie St					X							Traffic on Wyllie got worse because back gate of School was opened again
Liliha	Alternative 1		Wyllie St						X						Roundabout at Liliha/Wyllie would only work if there is a roundabout at Nuuanu/Wyllie
Liliha	Alternative 1		Bates			X									Like raised median for pedestrian safety , especially family with kids

Liliha or Nuuanu		General/ not location specific	Intersection/Location	Parking	Pedestrian	Crosswalks and crossings	Bike Lanes	Traffic & Signals	Roundabout	Sidewalks	Character/ Aesthetics	Speed	Safety	Bus Stops	Comments
Nuuanu	Alternative 3		Between Pauoa Rd and Bates St					X							Need to slow down speeders in off peak hours
Nuuanu	Alternative 3	General		X											Please save on street parking on both sides
Nuuanu	Alternative 3	General										X	X		Very low speed humps down hill area along the way
Nuuanu	Alternative 3	General											X		street trees are bad idea because they will block visibility, street has enough shade from existing large trees
Nuuanu	Alternative 3		Between Bates and Judd	X									X		Parking might block sight lines of driveways. No street trees.
Nuuanu	Alternative 3		Judd St					X							Add right turn only lane of Judd on to Nuuanu (Diamond head bound)
Nuuanu	Alternative 3	General					X								Safe biking space is more important than parking
Nuuanu	Alternative 3	General									X				More trees for shade, cooling, storm water absorption. Mangoes and wildlife habitat
Nuuanu	Alternative 3	General									X				No need so many trees, roots would raise sidewalk
Nuuanu	Alternative 3	General					X								Want bike lane back
Nuuanu	Alternative 3	General		X											Save our parking
Nuuanu	Alternative 3	General											X		Need traffic light for seniors
Nuuanu	Alternative 3	General									X				Trees are good, more trees for beauty and shade
Nuuanu	Alternative 3	General						X							Use cones to run a traffic simulation to see how traffic would be impacted
Nuuanu	Alternative 3	General								X			X		Sidewalk should be inside with grass next to the roadway, for pedestrian safety
Nuuanu	Alternative 3		School St							X					The curb extension at School St is good
Nuuanu	Alternative 3	General						X							Afternoon traffic (Makai) would be greatly impacted by only one lane.
Nuuanu	Alternative 3		Kuakini St					X							Left turn (Mauka) onto Kuakini St, cars would back up and block the traffic lanes.
Nuuanu	Alternative 3		Pauoa Rd					X							Install green left arrow for delayed green going Mauka, left turn yield on green. Change the Makai bound left turn only onto Pauoa Rd to Left and through lane.
Nuuanu	Alternative 3		Pauoa Rd					X							Need left turn signal to turn onto Pauoa Rd
Nuuanu	Alternative 3		Kawananakoa Pl					X							Keep two lanes and add traffic light
Nuuanu	Alternative 3		Mauka of Bates St										X		Trees block driveway visibility
Nuuanu	Alternative 3		Judd St										X		How is a fire truck going to be able to maneuver around extended curb
Nuuanu	Alternative 3		Pauoa Rd					X							During the school time traffic backs up on both direction between Judd and Pauoa Rd (7:00am-8:15am). Traffic would get worse with only one lane.
Nuuanu	Alternative 3		Between School and Hialoa			X									People live on the other side of the street would be jay walking to their cars
Nuuanu	Alternative 3	General									X				Who will maintain street trees, falling leaves, broken branches and extending roots into sidewalk
Nuuanu	Alternative 3	General									X				Widening sidewalk then planting trees on or by sidewalk is counter productive
Nuuanu	Alternative 3	General					X								Want bike lane put back
Nuuanu	Alternative 3	General					X								Should take "The Need" into consideration when installing a bike lane on Nuuanu, I doubt if there will be many users.
Nuuanu	Alternative 3		Sakura										X		Street trees block Sakura's driveway visibility
Nuuanu	Alternative 3	General									X				For any new trees planted, please consider native Hawaiian trees

Meeting Photos



APPENDIX

**Complete Streets Liliha Nuuanu
Community Meeting #2 Presentation**
May 22, 2018, 6:30pm-8:30pm



Honolulu / LILIHA & NUUANU COMPLETE STREETS

Community Meeting #2
May 22, 2018
Mae Mae Elementary, 6:30 pm



Today's Agenda

- 1) Project Re-Cap
- 2) Presentation of Revised Concepts & Preferred Alternatives
- 3) Q&A
- 4) Breakout for Plan Review/ Comments



Honolulu / LILIHA & NUUANU
COMPLETE STREETS



Project Overview

- Project Area:
 - Nuuanu Ave. between School St. and Pali Hwy.
 - Liliha St. between School St. and Wyllie St.

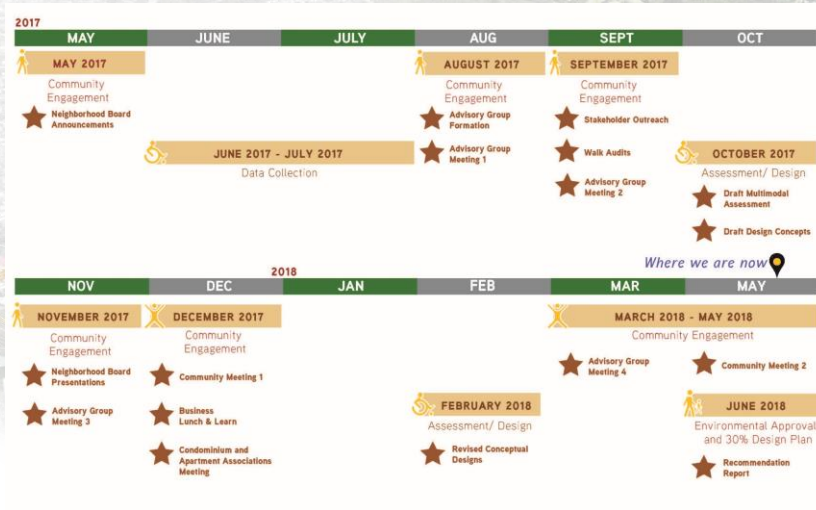
- Purpose:

Identify and implement complete streets solutions that are context sensitive and make the area more safe, inviting, and accommodating to all users. This will be done using current data, modeling, technical expertise, and community input.



Honolulu / LILIHA & NUUANU
COMPLETE STREETS

Project Schedule & Tasks



Honolulu LILIHA & NUUANU COMPLETE STREETS

Multimodal Assessment

- Review of Prior Studies
- Data Collection/Analysis
 - Vehicle/Pedestrian/Bicycle Counts
 - Crash Data
 - Transit Data
 - Level of Service Analysis
 - Bicycle
 - Pedestrian
 - Vehicle
 - Transit
- Community Input
 - Walk Audits
 - Advisory Group Input



Honolulu LILIHA & NUUANU COMPLETE STREETS

Public Process



Community Events
Advisory Group Input
Walking Audits
Stakeholder Meetings
Neighborhood Board Presentations

Honolulu / LILIHA & NUUANU
COMPLETE STREETS

Business Outreach

Liliha Street

Business or Building
McDonald's Liliha
Vapors Paradise
Jay's Café
New Mui Kwai Restaurant
Chinese Lutheran Church of HNL
Liliha Bakery
Longs Pharmacy
Kongko Mission Church
Honolulu MED Spa
Foodland
Jalea
Always Flowers
Naka Travel
State Farm
Kuakini Medical and Dental FCU
Cyber Life PC
Creations By You
Finance Factors

Nuuanu Avenue

Business or Building
Nuuanu Shopping Plaza / Starbucks
Walgreens
Nuuanu Laundry
7/11 Nuuanu – both locations
Bangkok Chef
Aloha Sushi Nuuanu
Tohoku Travel Service
Yagura Restaurant
L&L Hawaiian BBQ

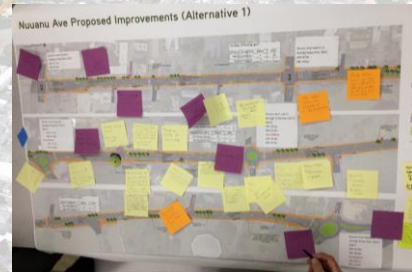
Honolulu / LILIHA & NUUANU
COMPLETE STREETS

Community Meeting 1 – 12/12/17, Mae Mae Elementary

- >100 Attendees
- Presentation of project and draft concepts
- Q&A
- Open House with plan review/comment stations

Follow-ups:

- Meeting summary with presentation/draft concepts posted online
- Revised concepts posted online at end of March – comment period open until May 31



Honolulu / LILIHA & NUUANU
COMPLETE STREETS

What We Heard at the Community Meeting:

Liliha Street:

- Support for bike lanes (dedicated space)
- Bus pullouts needed on 'Ewa side and at hospital
- On-street parking causes visibility issues – support for removal
- Need for dedicated left turn at Kuakini and Judd
- Improved crosswalk visibility/design
 - Beacon at Holokohana Lane

Nu'uanu Avenue:

- Prioritize pedestrian space over bike lanes (some support bike lanes)
- Retain as much on-street parking as possible
- Remove parking near driveways (safety/visibility issues)
- Improved street lighting for pedestrians
- Better crosswalk markings and signals (flashing beacons)
- Dedicated left turns at Kuakini and Pauoa
- Improved sidewalks
- Mixed reviews on roundabouts:
 - Support for traffic flow
 - Concern about delays/emergency vehicle access

Honolulu / LILIHA & NUUANU
COMPLETE STREETS



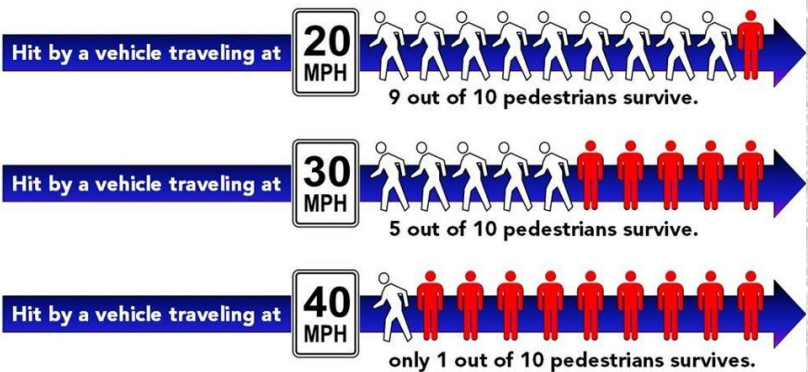
Honolulu / LILIHA & NUUANU
COMPLETE STREETS

02 Revised Design Concepts & Preferred Alternatives

Sue LeBrun, SSFM International



Speed and Pedestrian fatalities



Honolulu / LILIHA & NUUANU
COMPLETE STREETS

Speed Analysis

West Bound

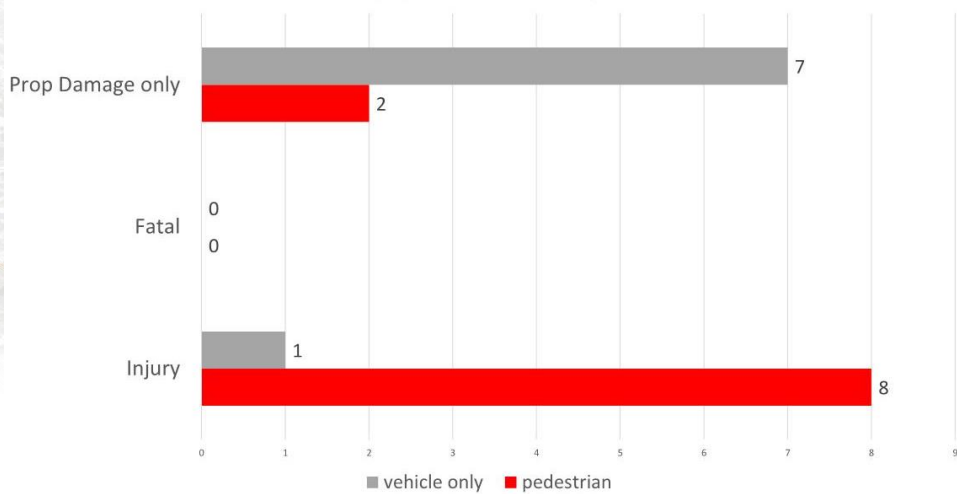
Time	< 15	15 - 19	20 - 24	25 - 29	30 - 34	35 - 39	40 - 44	45 - 49	50 - 54	55 - 59	60 - 64	65 - 69	70 +	Total
0:00 AM	0	1	1	7	11	5	1	0	0	0	0	0	0	26
1:00	0	1	0	4	3	3	0	0	0	0	0	0	0	11
2:00	0	0	1	4	3	3	0	0	0	0	0	0	0	11
3:00	0	0	0	4	6	5	0	0	0	0	0	0	0	15
4:00	0	0	0	4	17	5	1	0	0	0	0	0	0	27
5:00	2	2	5	15	32	17	2	0	0	0	0	0	0	75
6:00	9	18	21	94	205	151	17	0	0	0	0	0	0	515
7:00	5	12	35	167	375	215	22	1	0	0	0	0	0	832
8:00	9	18	23	96	203	141	11	0	0	0	0	0	0	501
9:00	4	8	13	49	116	68	2	0	0	0	0	0	0	260
10:00	2	13	25	41	99	68	12	0	0	0	0	0	0	260
11:00	8	5	14	45	93	61	4	0	0	0	0	0	0	230
12:00 PM	10	14	12	52	118	72	10	1	0	0	0	0	0	289
13:00	11	15	16	72	121	78	7	1	0	0	0	0	0	321
14:00	4	17	19	54	102	83	16	0	0	0	0	0	0	295
15:00	5	11	27	84	145	83	5	0	0	0	0	0	0	360
16:00	8	25	15	56	123	75	8	0	0	0	0	0	0	310
17:00	7	19	18	64	122	84	16	0	0	0	0	0	0	330
18:00	12	11	5	48	80	53	2	0	0	0	0	0	0	211
19:00	4	3	10	32	66	37	4	0	0	0	0	0	0	156
20:00	3	5	9	22	42	32	2	0	0	0	0	0	0	115
21:00	2	6	5	21	41	19	1	0	0	0	0	0	0	95
22:00	0	1	3	7	17	13	1	0	0	0	0	0	0	42
23:00	0	0	1	1	5	4	0	0	0	0	0	0	0	11
Totals	105	205	278	1043	2145	1375	144	3						5298
% of Totals	2%	4%	5%	20%	40%	26%	3%	0%						100%

Nuuanu Ave
E/O Robinson Ln
9/20/17 Wednesday

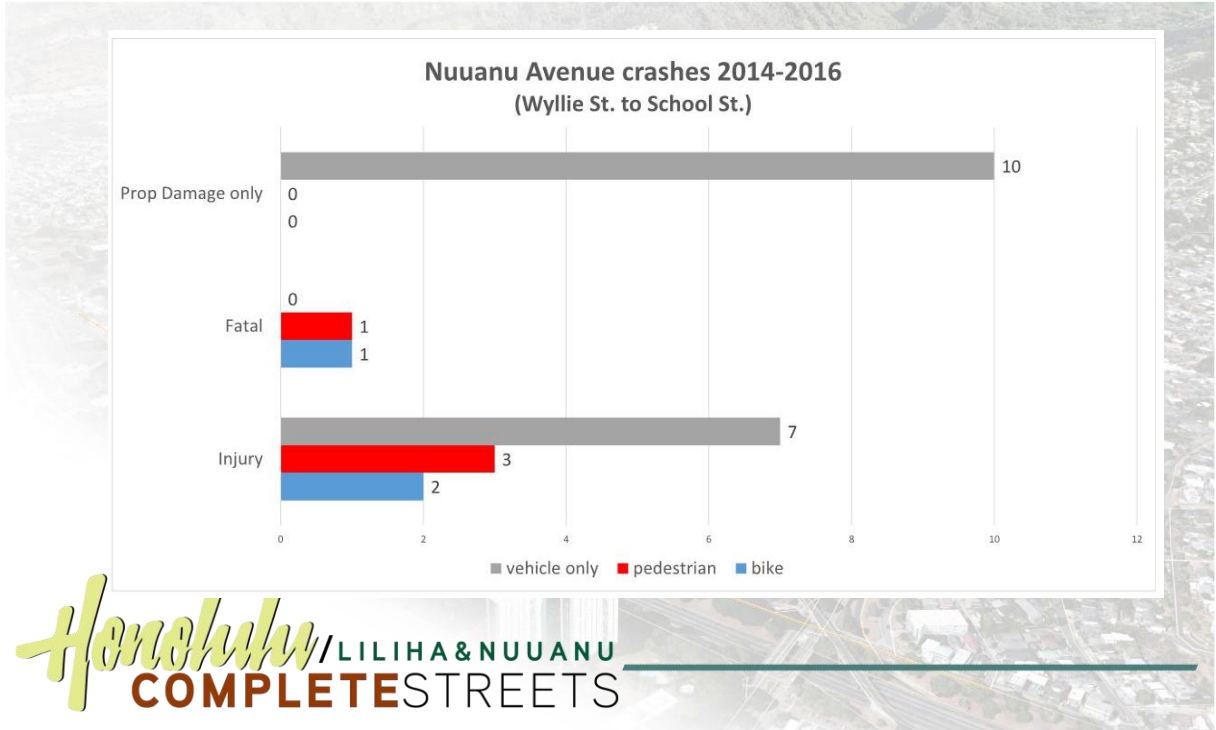
Street Name	Direction	Percentiles					ADT
		15th	50th	Average	85th	95th	
Nuuanu Ave	East Bound	26	31	31	85	39	3976
Nuuanu Ave	West Bound	26	32	32	38	40	5298

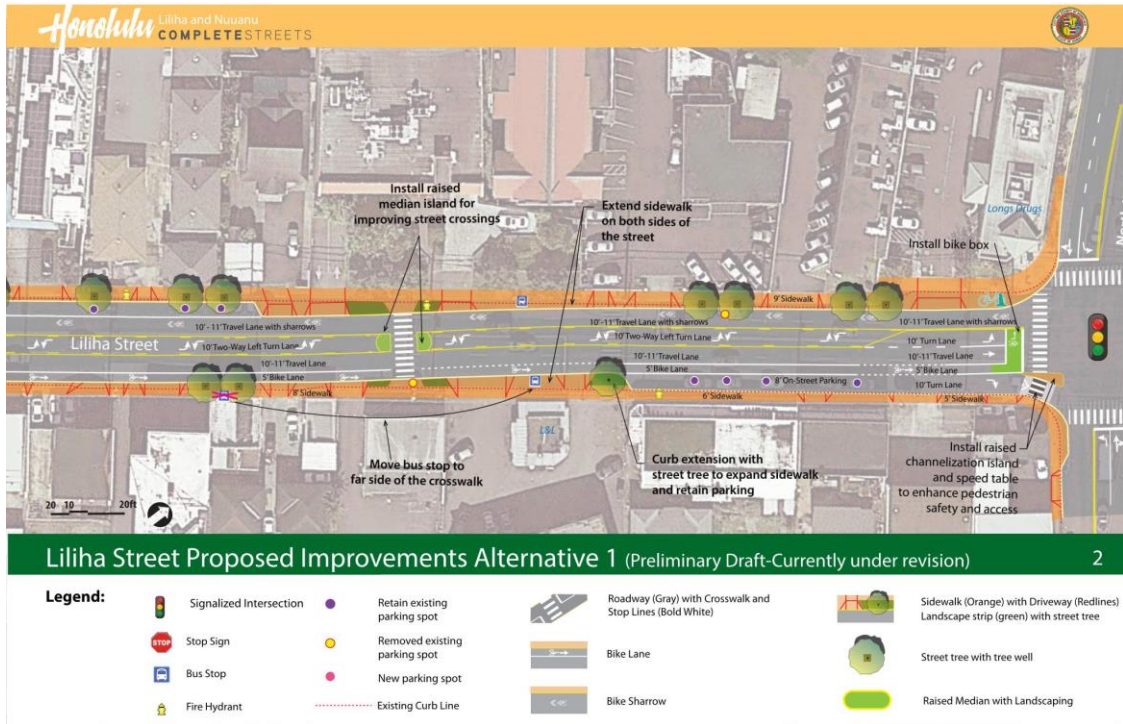
Honolulu / LILHA & NUUANU
COMPLETE STREETS

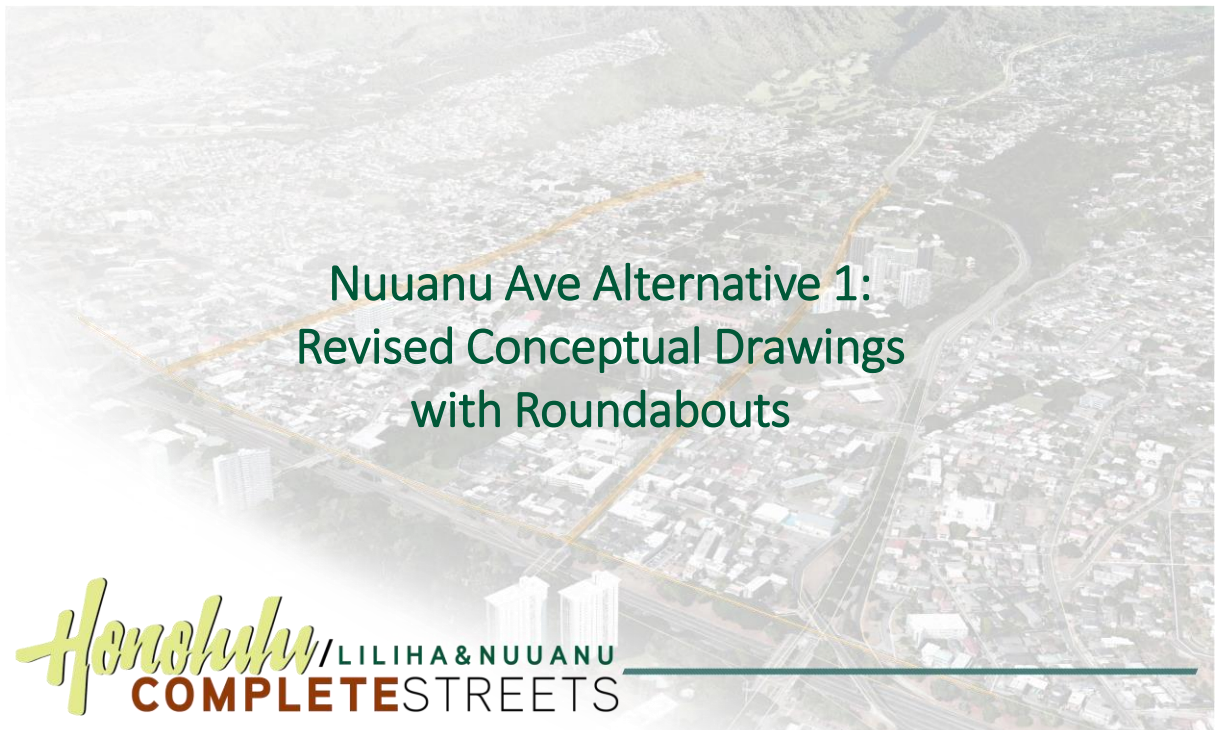
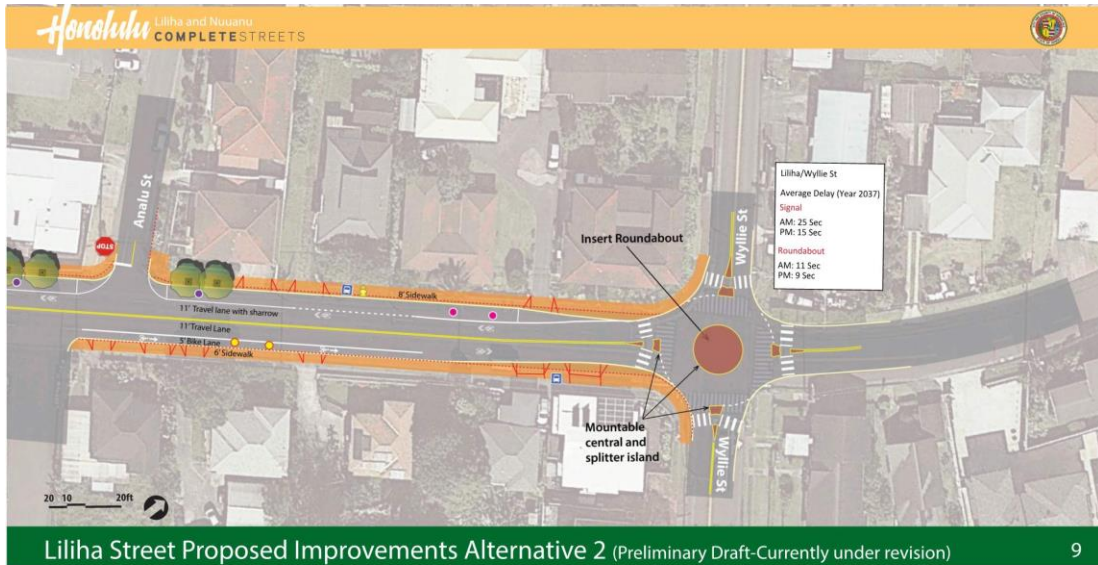
Liliha Street crashes 2014-2016
(Wyllie St. to School St.)

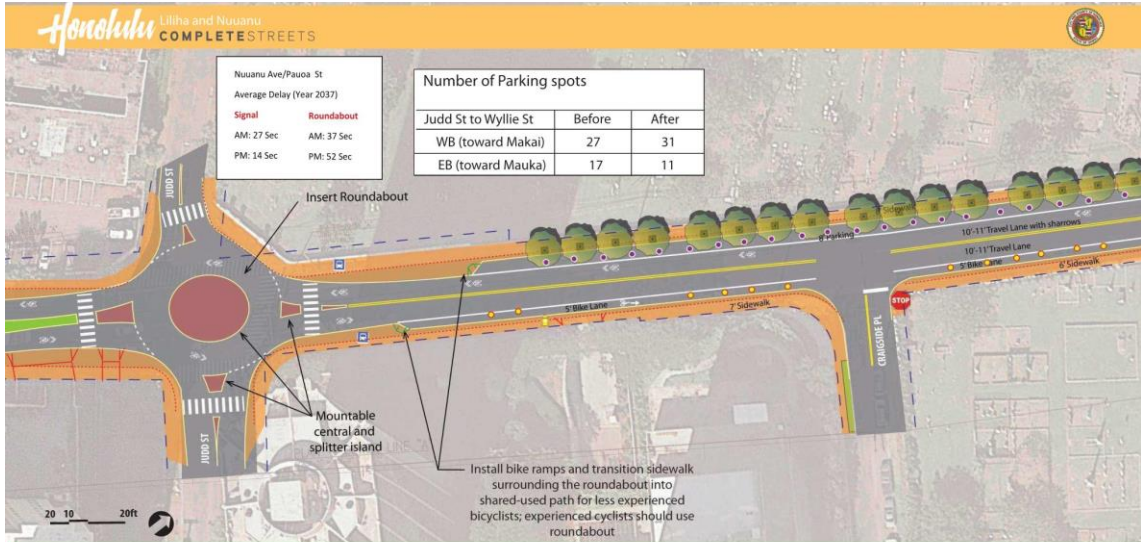


Honolulu / LILHA & NUUANU
COMPLETE STREETS





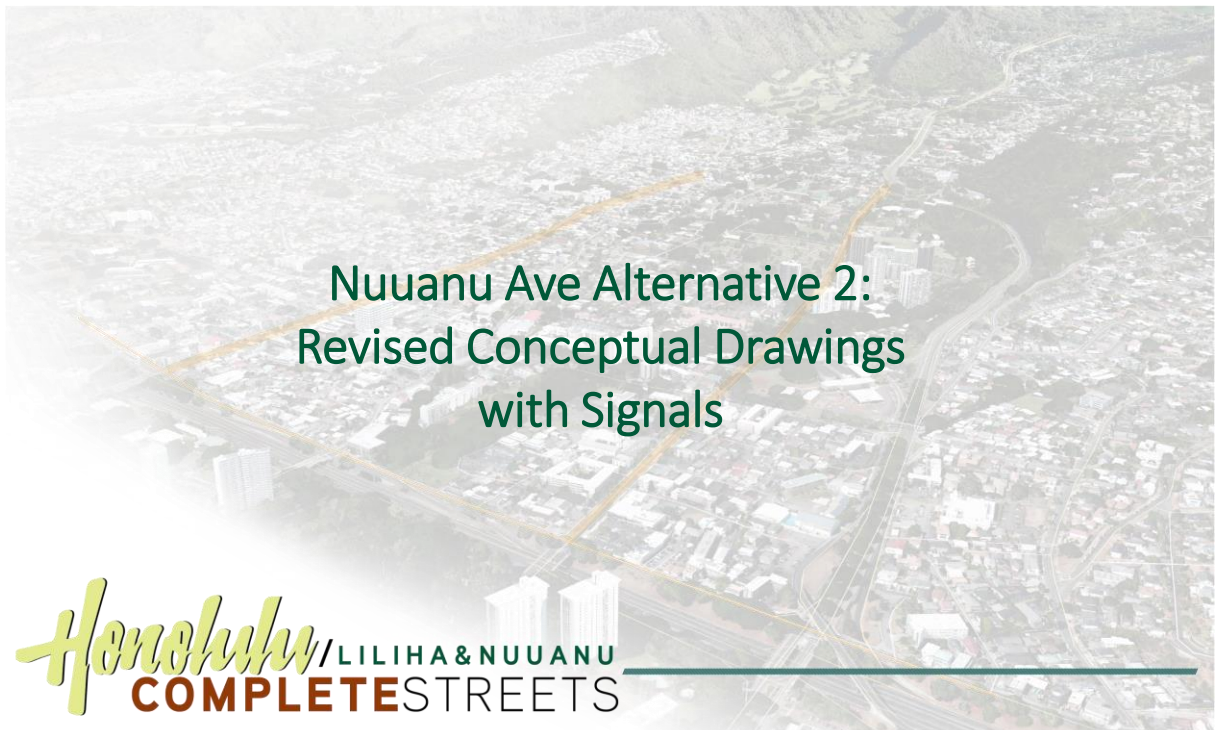




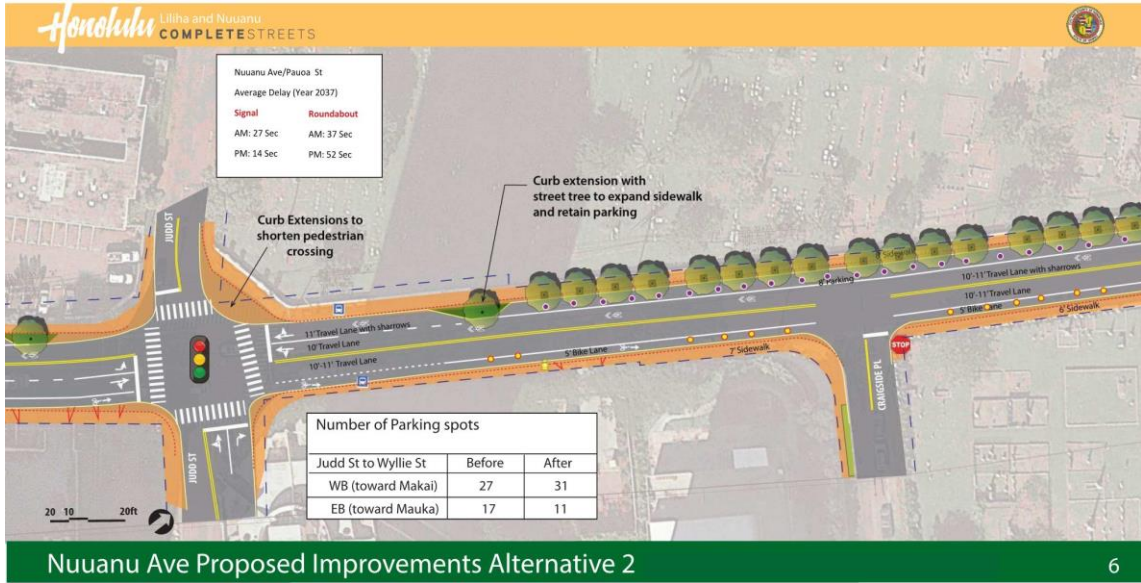
Nuuanu Ave Proposed Improvements Alternative 1

6

- Legend:**
- Signalized Intersection
 - Stop Sign
 - Bus Stop
 - Fire Hydrant
 - Retain existing parking spot
 - Removed existing parking spot
 - New parking spot
 - Existing Curb Line
 - Roadway (Gray) with Crosswalk and Stop Lines (Bold White)
 - Bike Lane
 - Bike Sharrow
 - Raised Median with Landscaping
 - Sidewalk (Orange) with Driveway (Redlines) Landscape strip (green) with street tree
 - Street tree with tree well
 - Existing Tree

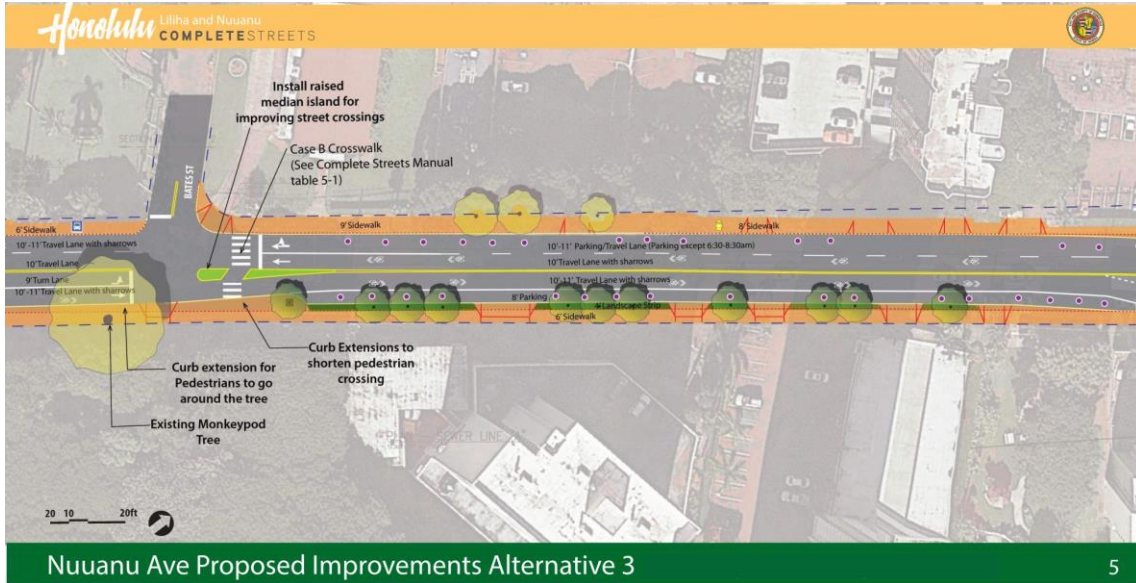


Nuuanu Ave Alternative 2:
Revised Conceptual Drawings
with Signals



- Legend:**
- Signalized Intersection
 - Stop Sign
 - Bus Stop
 - Fire Hydrant
 - Retain existing parking spot
 - Removed existing parking spot
 - New parking spot
 - Existing Curb Line
 - Roadway (Gray) with Crosswalk and Stop Lines (Bold White)
 - Bike Lane
 - Bike Sharrow
 - Raised Median with Landscaping
 - Sidewalk (Orange) with Driveway (Redlines) Landscape strip (green) with street tree
 - Street tree with tree well
 - Existing Tree





Legend:

	Signalized Intersection		Retain existing parking spot		Roadway (Gray) with Crosswalk and Stop Lines (Bold White)		Sidewalk (Orange) with Driveway (Redlines) Landscape strip (green) with street tree
	Stop Sign		Removed existing parking spot		Bike Lane		Raised Median with Landscaping
	Bus Stop		New parking spot		Bike Sharrow		Street tree with tree well
	Fire Hydrant		Existing Curb Line				Existing Tree

Input Received on the Revised Alternatives

Advisory Group (March 2018)

- Ensure there is little/no impacts of the designs on traffic
- Balance competing interests – street parking benefits fewer people than improvements for traffic flow and pedestrian/bike safety
- Support for trees (that don't impair visibility)
- Support for dedicated left turn signals
- Support for flashing beacons at pedestrian crossings
- Support for roundabouts (if better for traffic flow)



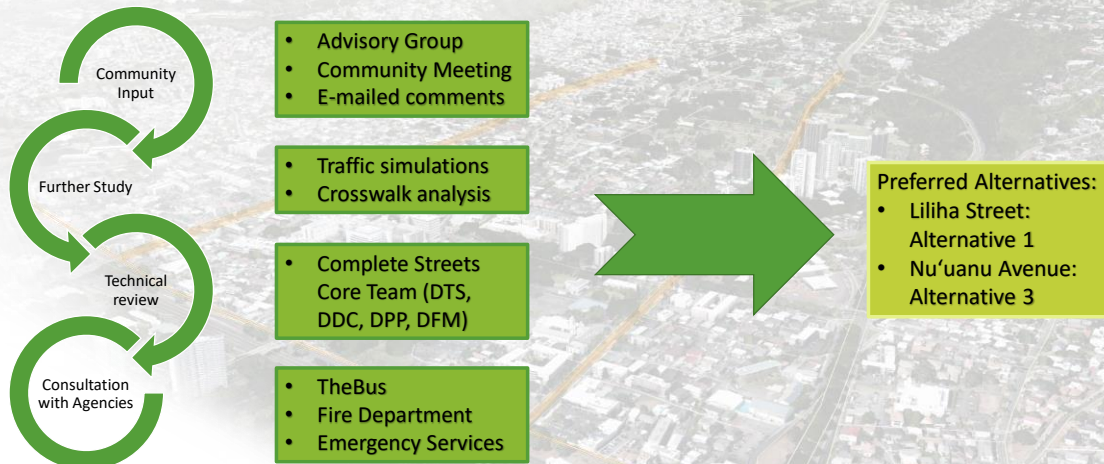
Input Received on the Revised Alternatives

Public Comments (E-mailed comments since March 2018)

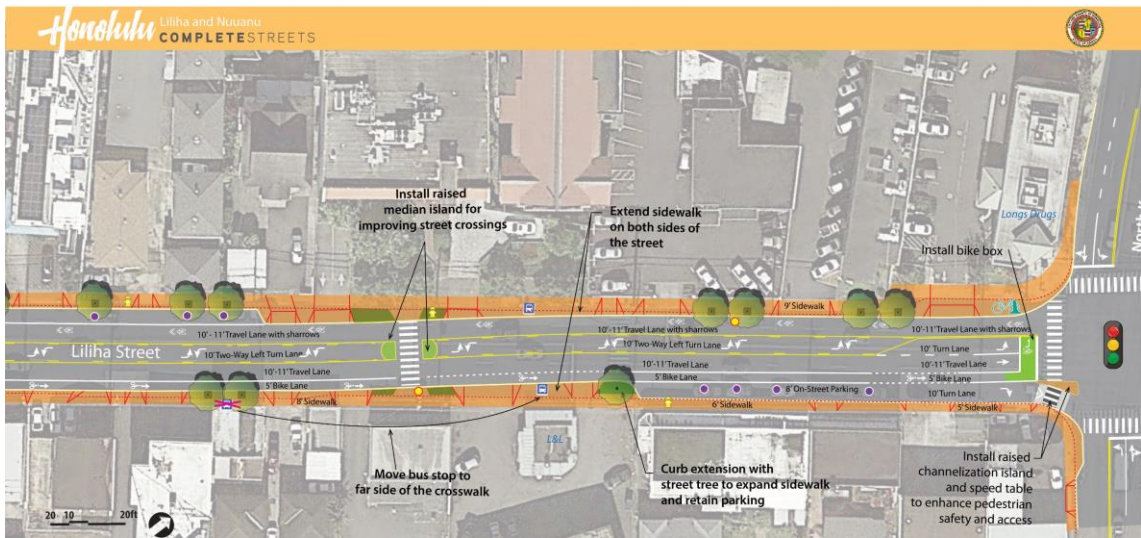
- Support for dedicated left turn signals (Nu'uaniu x Pāhoa, Nu'uaniu x Kuakini)
- Support for Nu'uaniu Alternative 3 (retain parking, expand sidewalks)
- Support for bike lanes on Nu'uaniu for safety (Alternative 1)
- Need for Nu'uaniu repaving (now underway)
- Support for pedestrian crossing improvements

Honolulu / LILIHA & NUUANU
COMPLETE STREETS

Process of Revising and Refining Alternatives



Honolulu / LILIHA & NUUANU
COMPLETE STREETS

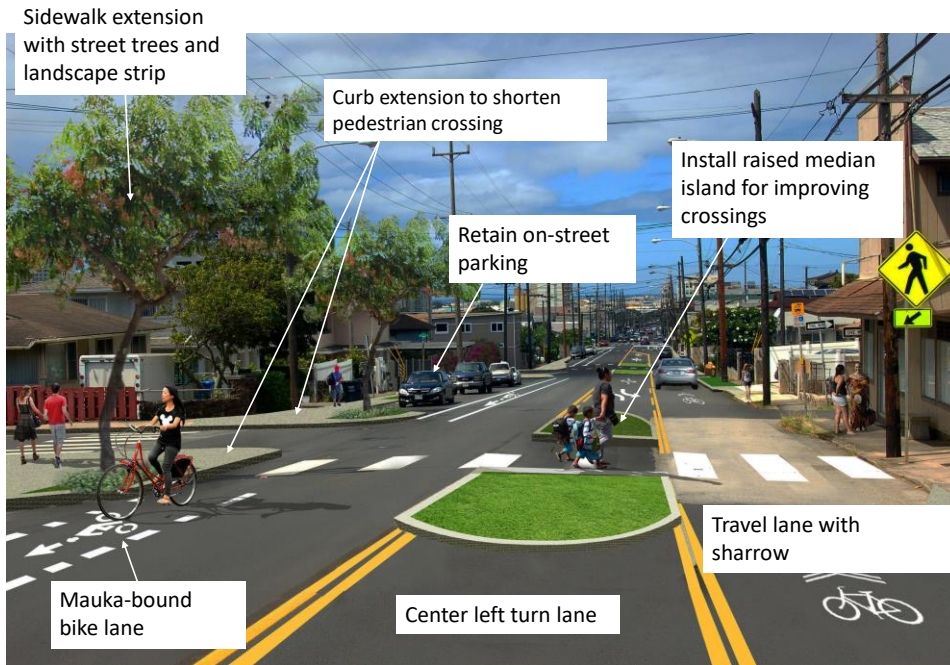


Liliha Street Proposed Improvements Alternative 1

2

Legend:

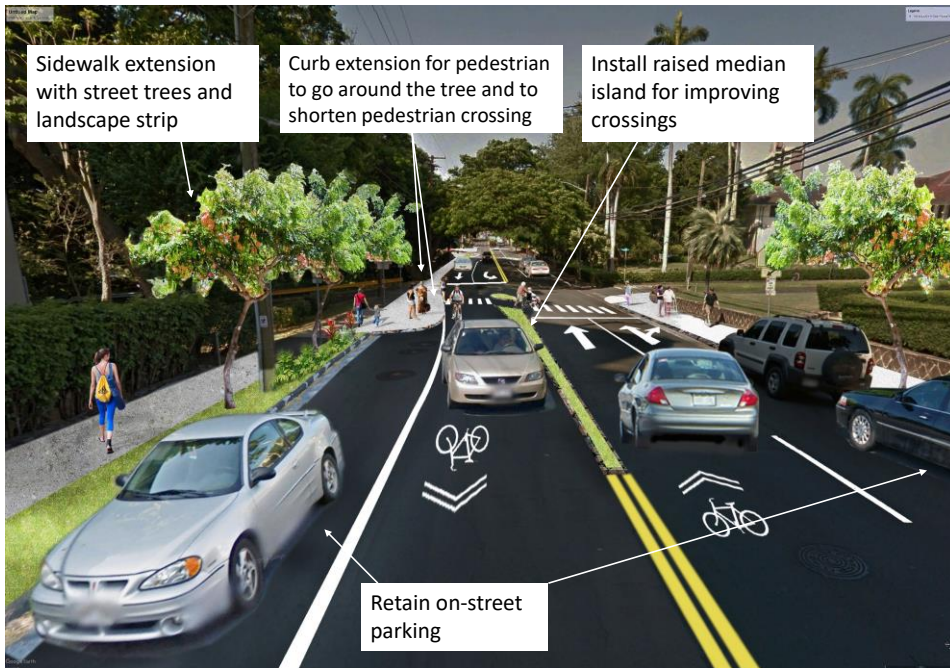
- | | | | | | | | |
|--|-------------------------|--|-------------------------------|--|---|--|---|
| | Signalized Intersection | | Retain existing parking spot | | Roadway (Gray) with Crosswalk and Stop Lines (Bold White) | | Sidewalk (Orange) with Driveway (Redlines) Landscape strip (green) with street tree |
| | Stop Sign | | Removed existing parking spot | | Bike Lane | | Street tree with tree well |
| | Bus Stop | | New parking spot | | Bike Sharrow | | Raised Median with Landscaping |
| | Fire Hydrant | | Existing Curb Line | | | | |

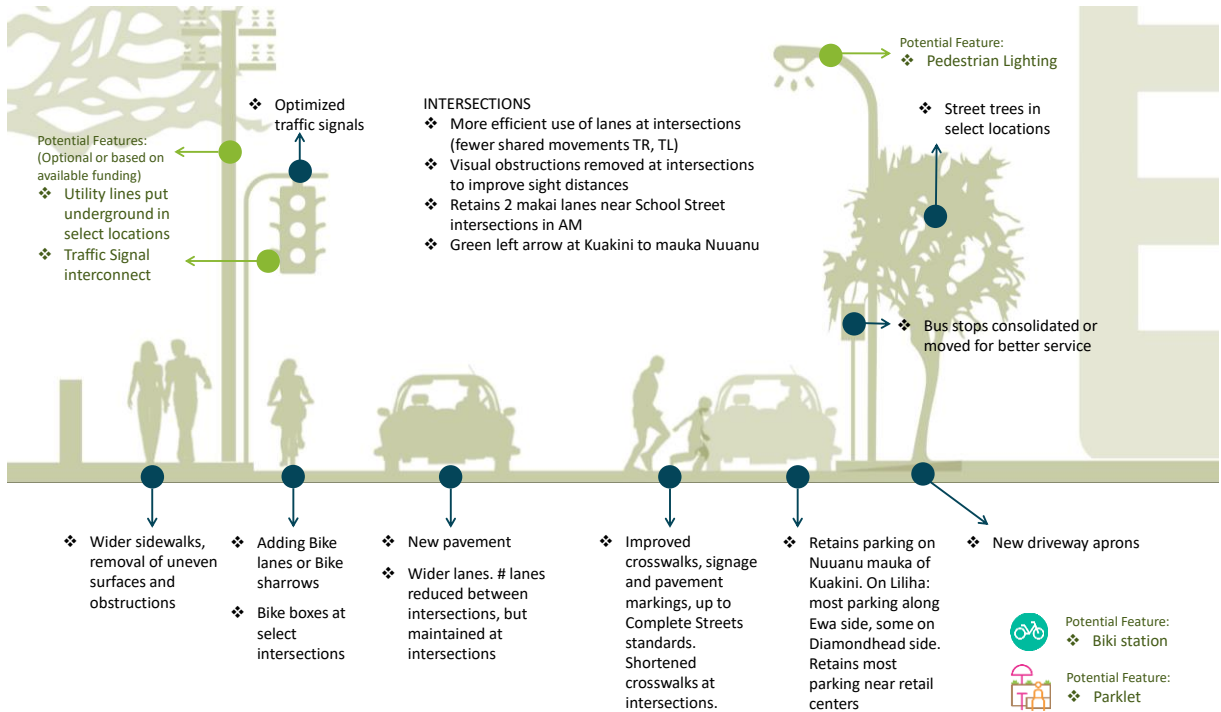




Legend:

	Signalized Intersection		Retain existing parking spot		Roadway (Gray) with Crosswalk and Stop Lines (Bold White)		Sidewalk (Orange) with Driveway (Redlines) Landscape strip (green) with street tree
	Stop Sign		Removed existing parking spot		Bike Lane		Raised Median with Landscaping
	Bus Stop		New parking spot		Bike Sharrow		Street tree with tree well
	Fire Hydrant		Existing Curb Line				Existing Tree





Poll: What do you think of the preferred alternatives?

How to Participate:

- 1 open smartphone browser
- 2 go to sift.ly
- 3 enter participant code **KZZ6**

Raise your hand if you need a paper poll!



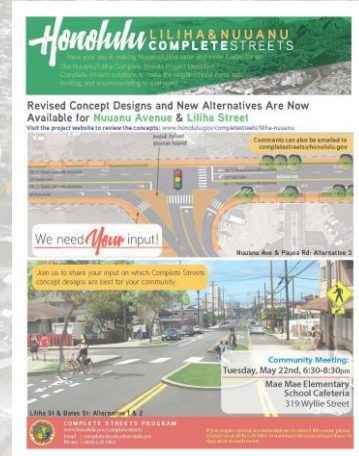
What Happens Next?

Remaining SSFM Tasks:

- **Community Meeting #2 (May 22, 2018)**
 - Present and gather input on revised concepts & preferred alternatives
- **Comment Period open through May 31, 2018**
- **Environmental Review & 30% Design Plans**
 - Finalize 30% Designs (July 2018)

Final Design & Construction:

- Consultant to develop 100% design plans
- Technical & feasibility review by City agencies
- Final design, bidding/award, & construction



Honolulu / LILIHA & NUUANU
COMPLETE STREETS

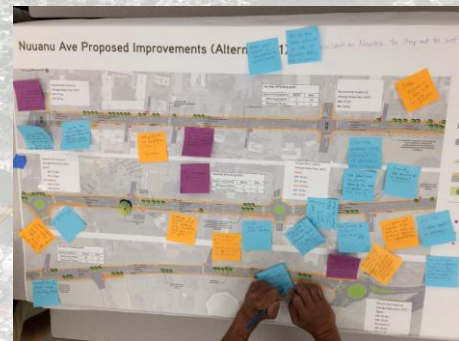


03 Questions & Answers



Plan Review & Comments

- Share your comments on the preferred alternatives – let us know what you like, and what still needs to be addressed.
- Plans for other alternatives are available for reference – if you like a different alternative better, tell us!



Honolulu / LILIHA & NUUANU
COMPLETE STREETS

MAHALO

CONTACT INFORMATION

completestreets@honolulu.gov

FOLLOW US

Join the E-mail List at

www.Honolulu.gov/completestreets

Facebook:

Instagram: @CCH_complete_streets