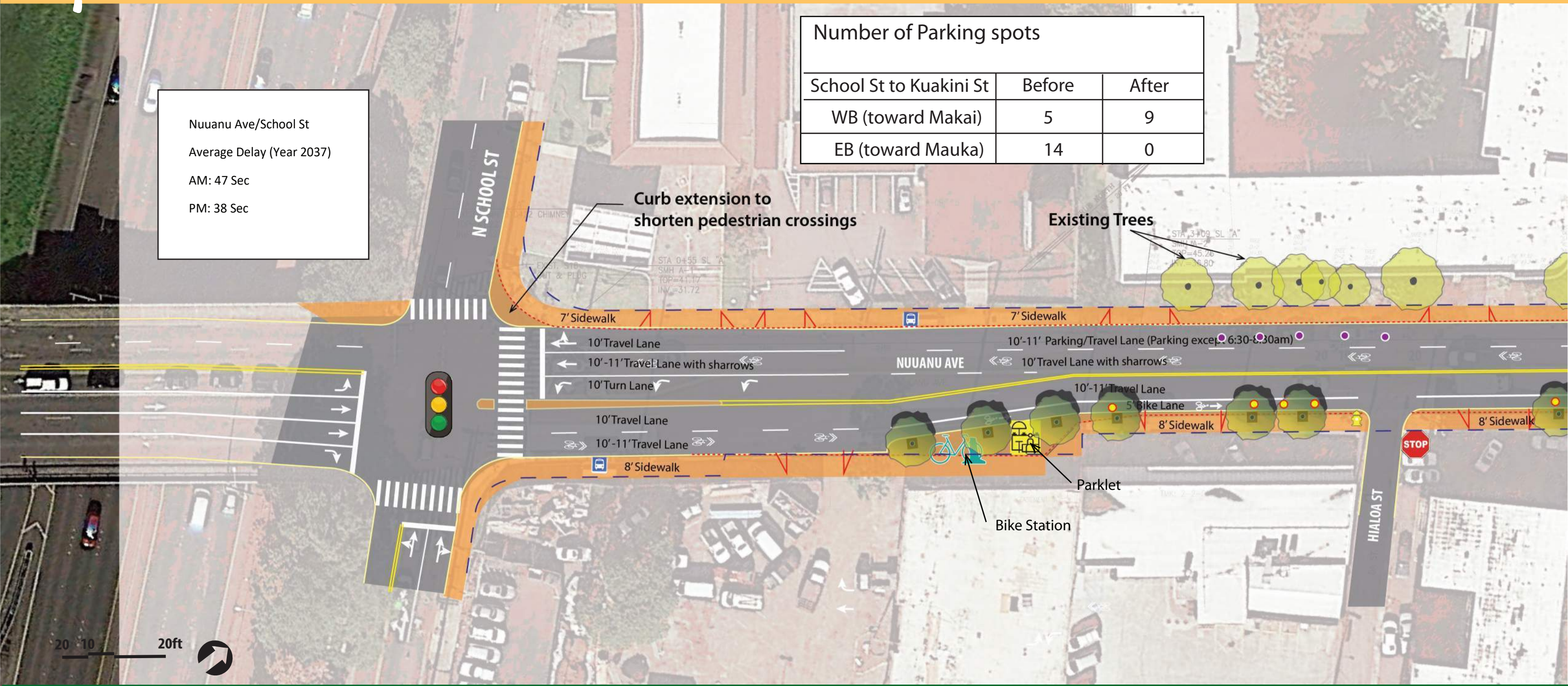


Number of Parking spots		
School St to Kuakini St	Before	After
WB (toward Makai)	5	9
EB (toward Mauka)	14	0

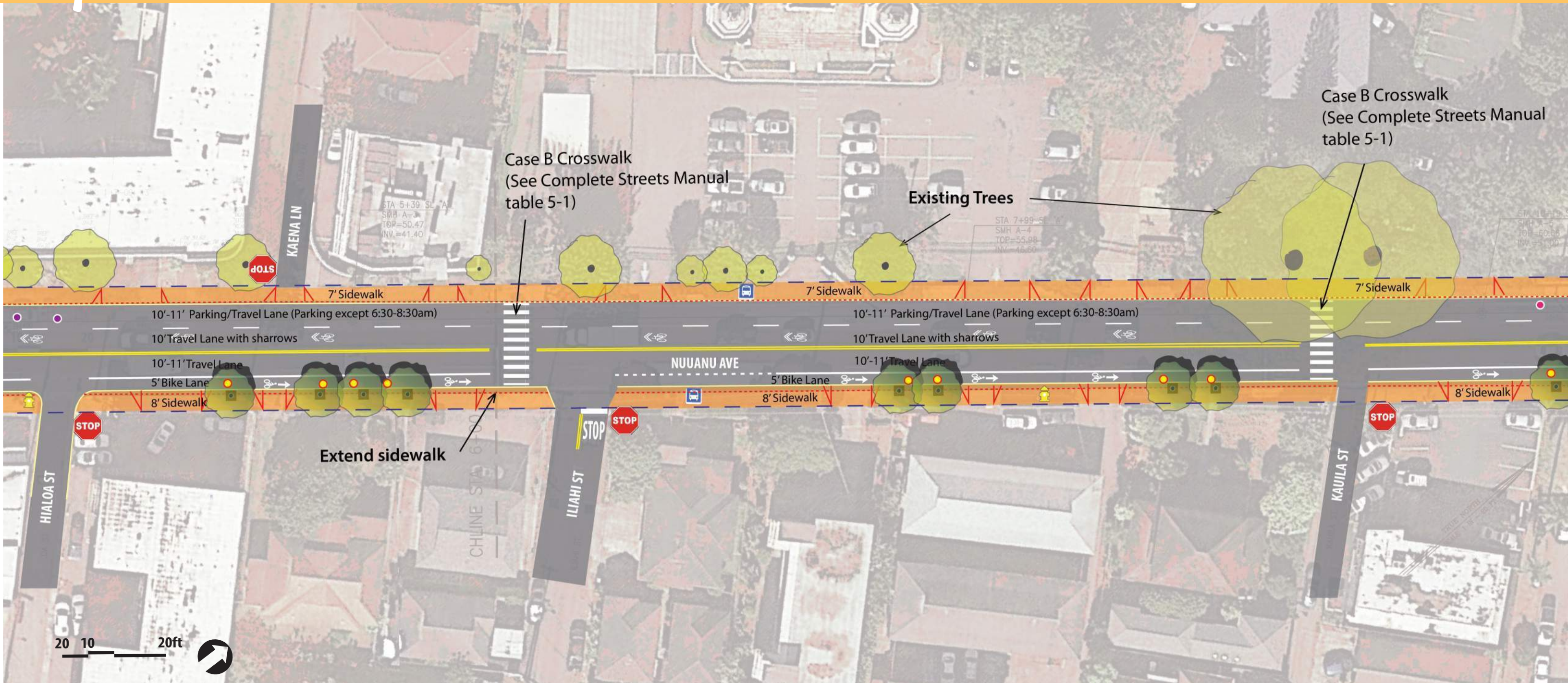
Nuuanu Ave/School St
Average Delay (Year 2037)
AM: 47 Sec
PM: 38 Sec



Nuuanu Ave Proposed Improvements Alternative 3

Legend:

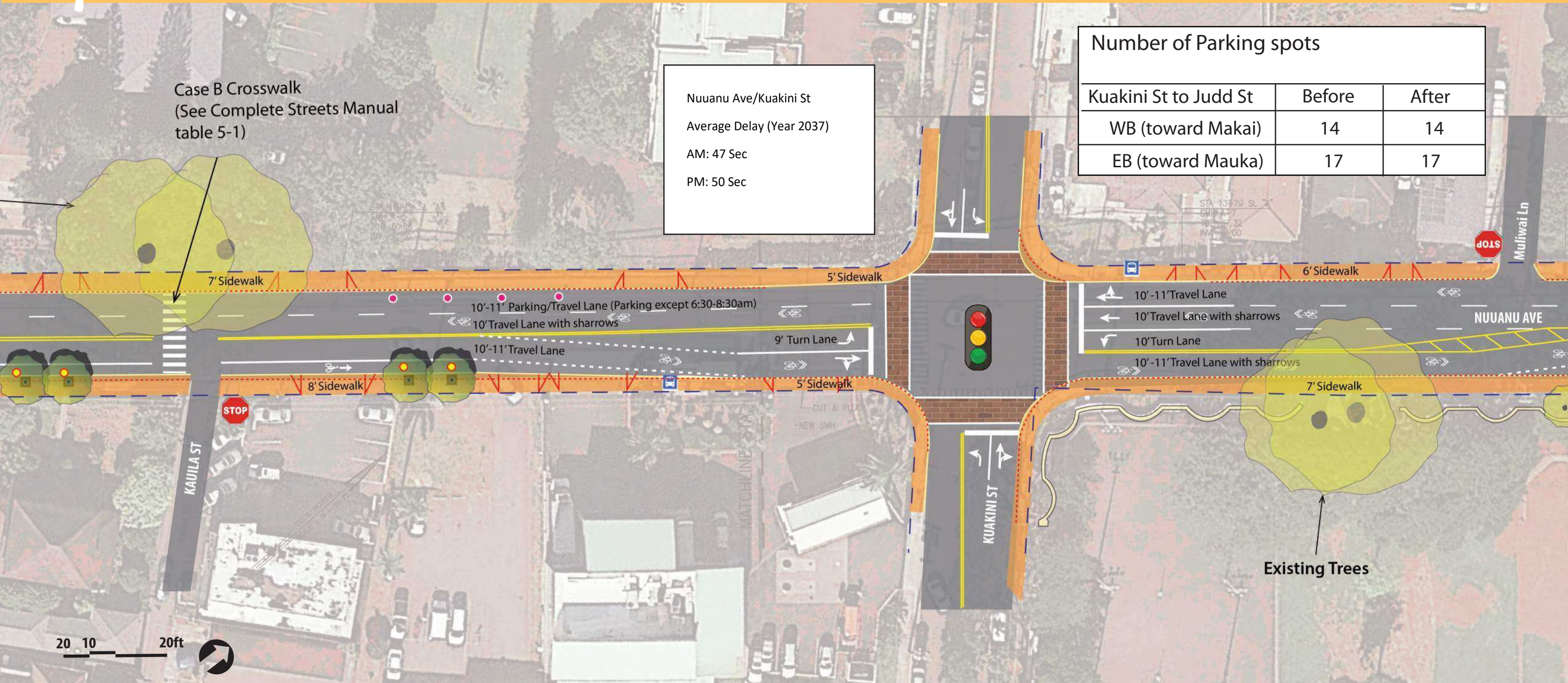
- Signalized Intersection
- Retain existing parking spot
- Roadway (Gray) with Crosswalk and Stop Lines (Bold White)
- Sidewalk (Orange) with Driveway (Redlines) Landscape strip (green) with street tree
- Stop Sign
- Removed existing parking spot
- Bike Lane
- Raised Median with Landscaping
- Bus Stop
- New parking spot
- Bike Sharrow
- Street tree with tree well
- Fire Hydrant
- Existing Curb Line
- Existing Tree



Nuuanu Ave Proposed Improvements Alternative 3

Legend:

- | | | | | | | | |
|--|-------------------------|--|-------------------------------|--|---|--|---|
| | Signalized Intersection | | Retain existing parking spot | | Roadway (Gray) with Crosswalk and Stop Lines (Bold White) | | Sidewalk (Orange) with Driveway (Redlines) Landscape strip (green) with street tree |
| | Stop Sign | | Removed existing parking spot | | Bike Lane | | Raised Median with Landscaping |
| | Bus Stop | | New parking spot | | Bike Sharrow | | Street tree with tree well |
| | Fire Hydrant | | Existing Curb Line | | | | Existing Tree |



Nuuanu Ave/Kuakini St
 Average Delay (Year 2037)
 AM: 47 Sec
 PM: 50 Sec

Number of Parking spots		
Kuakini St to Judd St	Before	After
WB (toward Makai)	14	14
EB (toward Mauka)	17	17

Nuuanu Ave Proposed Improvements Alternative 3

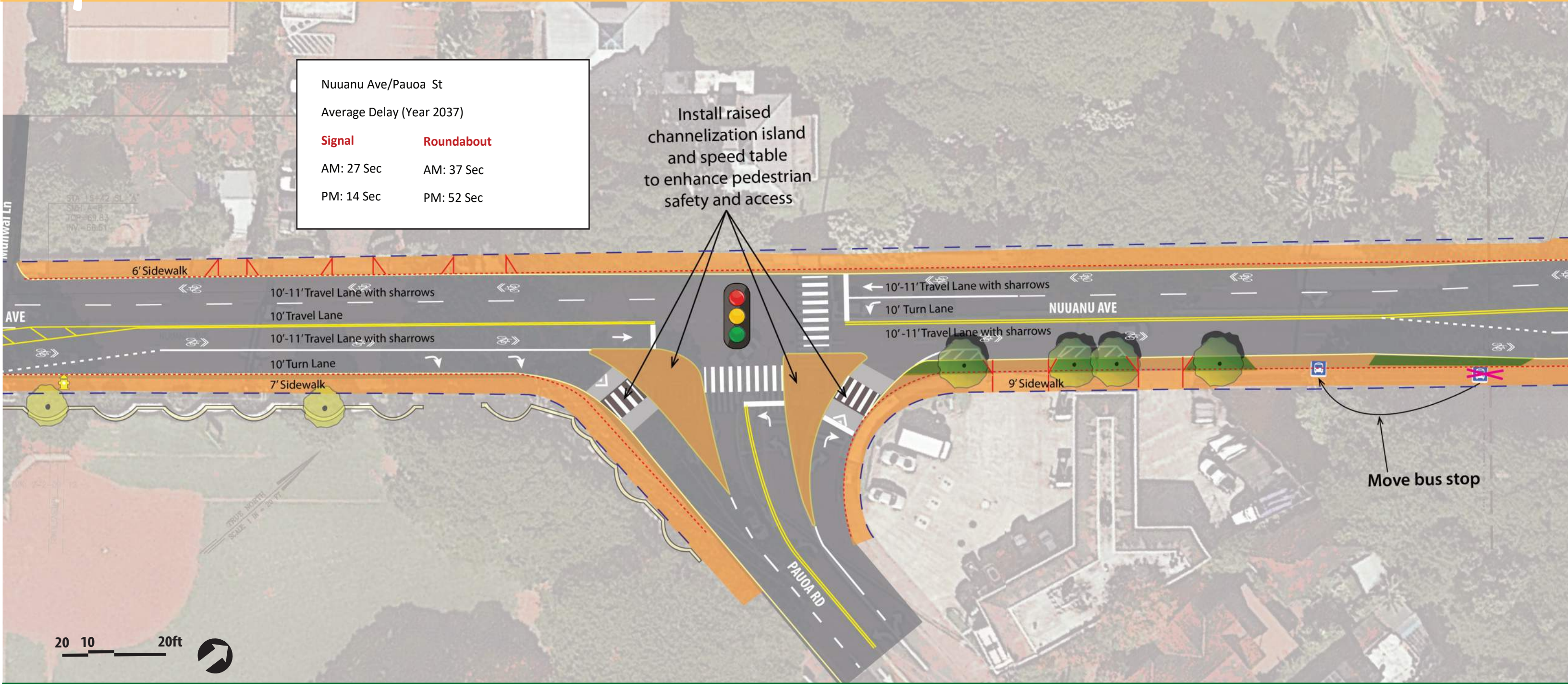
Legend:

- Signalized Intersection
- Stop Sign
- Bus Stop
- Fire Hydrant
- Retain existing parking spot
- Removed existing parking spot
- New parking spot
- Existing Curb Line
- Roadway (Gray) with Crosswalk and Stop Lines (Bold White)
- Bike Lane
- Bike Sharrow
- Sidewalk (Orange) with Driveway (Redlines) Landscape strip (green) with street tree
- Raised Median with Landscaping
- Street tree with tree well
- Existing Tree

Nuuanu Ave/Pauoa St
Average Delay (Year 2037)

Signal	Roundabout
AM: 27 Sec	AM: 37 Sec
PM: 14 Sec	PM: 52 Sec

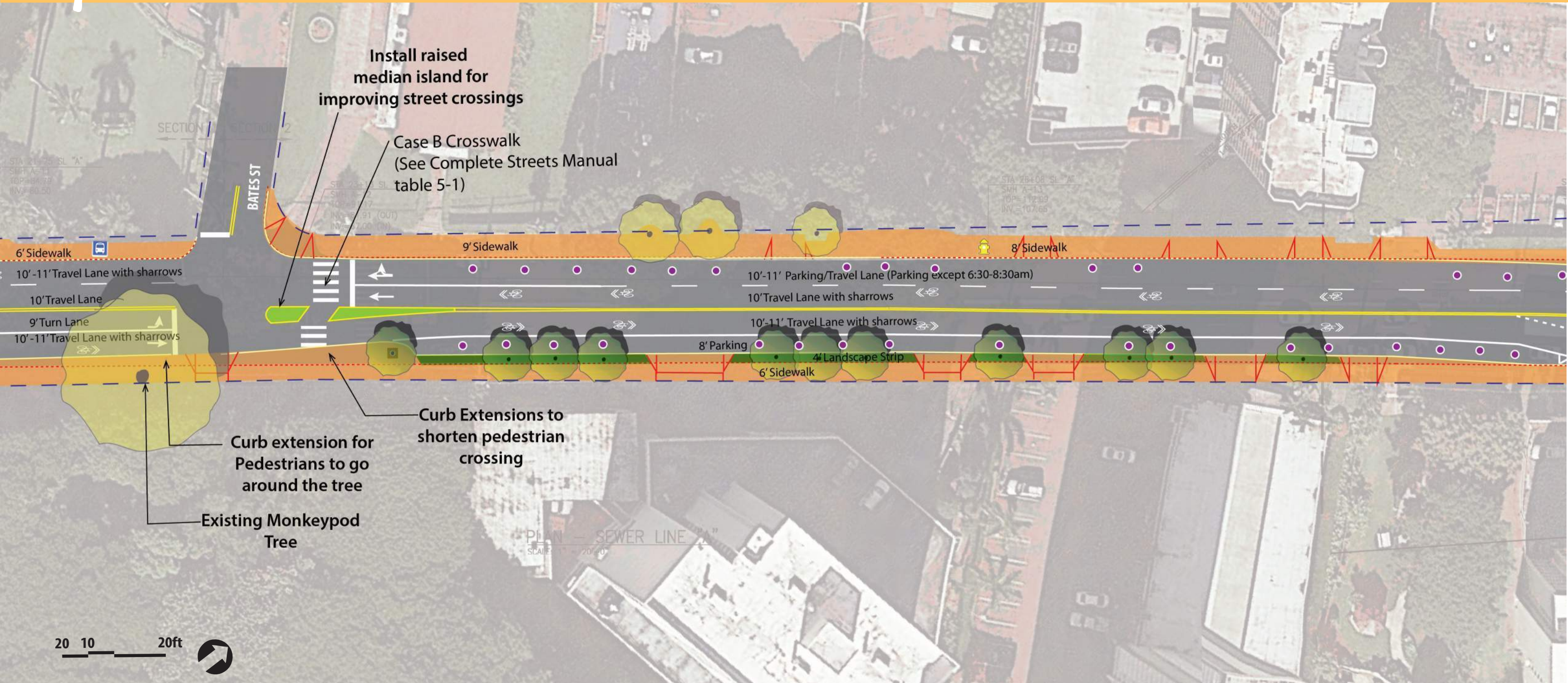
Install raised channelization island and speed table to enhance pedestrian safety and access



Nuuanu Ave Proposed Improvements Alternative 3 (Preliminary Draft-Currently under revision)
















Legend:

- | | | | |
|-------------------------|-------------------------------|---|---|
| Signalized Intersection | Retain existing parking spot | Roadway (Gray) with Crosswalk and Stop Lines (Bold White) | Sidewalk (Orange) with Driveway (Redlines) Landscape strip (green) with street tree |
| Stop Sign | Removed existing parking spot | Bike Lane | Raised Median with Landscaping |
| Bus Stop | New parking spot | Bike Sharrow | Street tree with tree well |
| Fire Hydrant | Existing Curb Line | | Existing Tree |



Nuuanu Ave Proposed Improvements Alternative 3

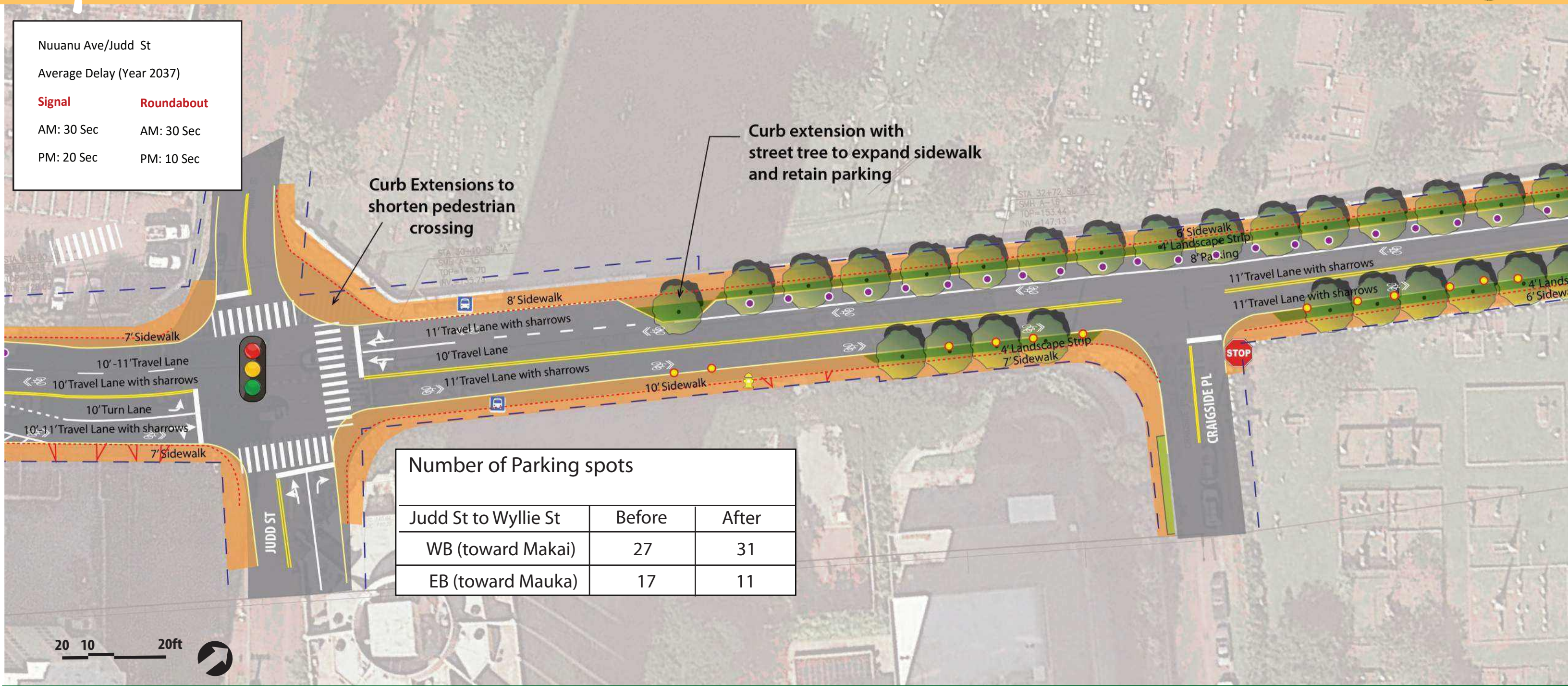
Legend:

-  Signalized Intersection
-  Retain existing parking spot
-  Roadway (Gray) with Crosswalk and Stop Lines (Bold White)
-  Sidewalk (Orange) with Driveway (Redlines) Landscape strip (green) with street tree
-  Stop Sign
-  Removed existing parking spot
-  Bike Lane
-  Raised Median with Landscaping
-  Bus Stop
-  New parking spot
-  Bike Sharrow
-  Street tree with tree well
-  Fire Hydrant
-  Existing Curb Line
-  Existing Tree

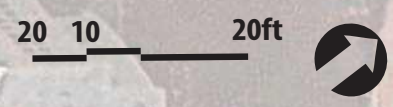
Nuuanu Ave/Judd St

Average Delay (Year 2037)

Signal	Roundabout
AM: 30 Sec	AM: 30 Sec
PM: 20 Sec	PM: 10 Sec



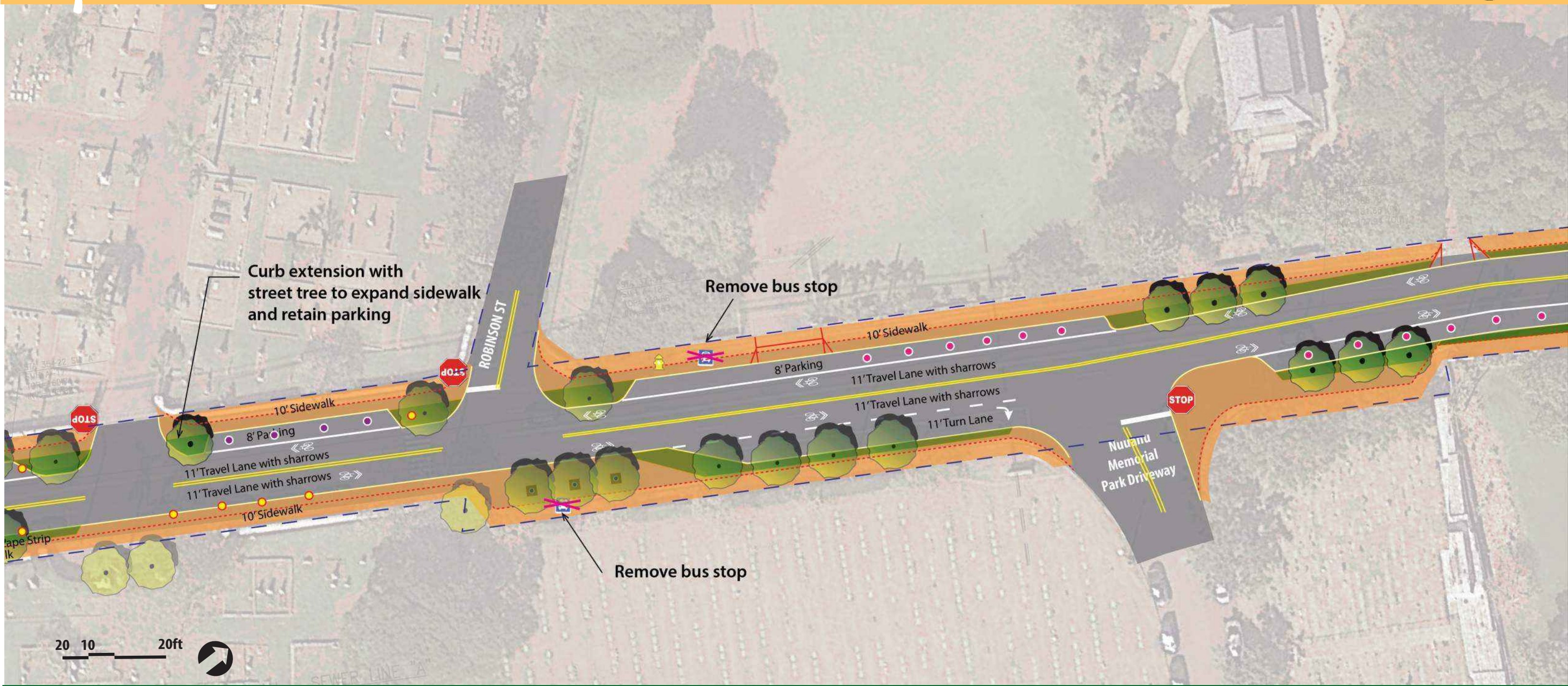
Number of Parking spots		
	Before	After
Judd St to Wyllie St		
WB (toward Makai)	27	31
EB (toward Mauka)	17	11



Nuuanu Ave Proposed Improvements Alternative 3

Legend:

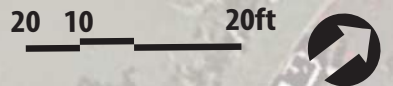
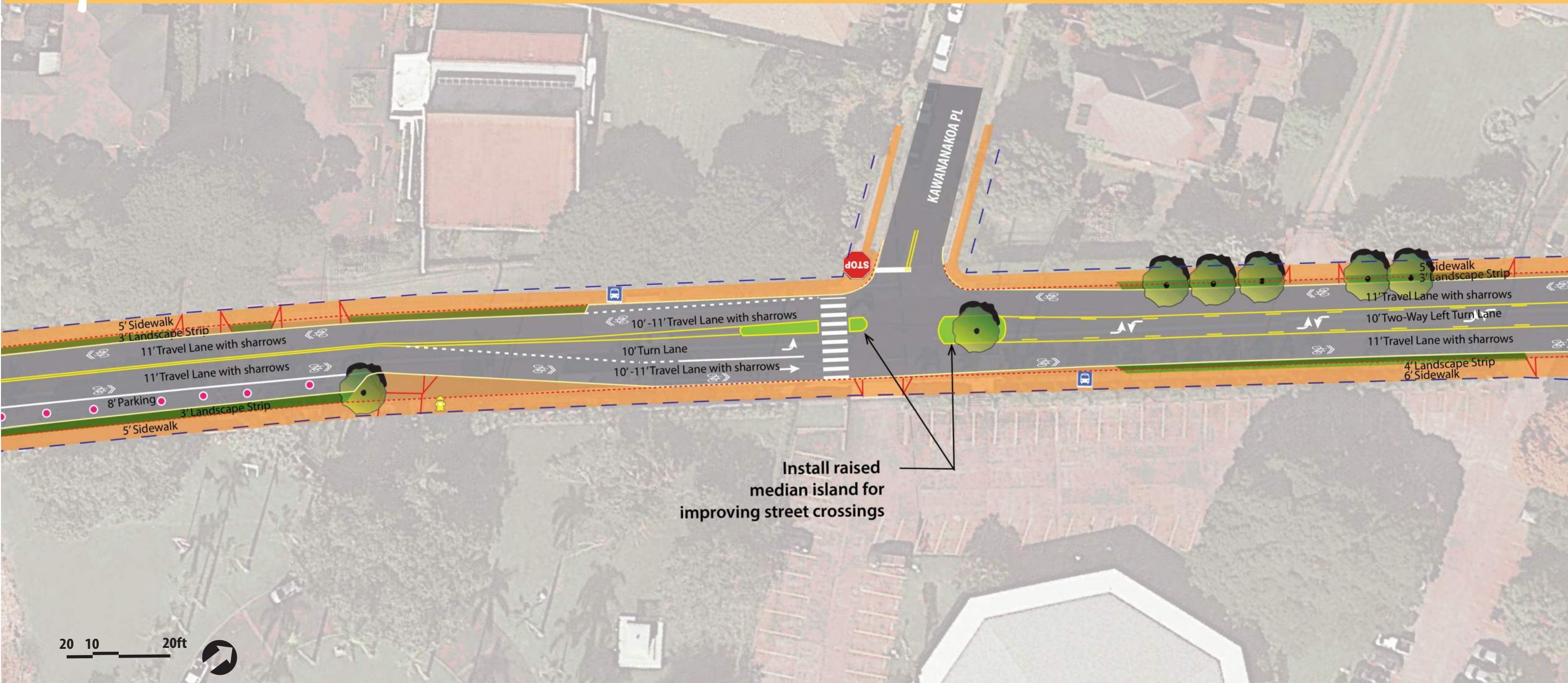
- Signalized Intersection
- Retain existing parking spot
- Roadway (Gray) with Crosswalk and Stop Lines (Bold White)
- Sidewalk (Orange) with Driveway (Redlines) Landscape strip (green) with street tree
- Stop Sign
- Removed existing parking spot
- Bike Lane
- Raised Median with Landscaping
- Bus Stop
- New parking spot
- Bike Sharrow
- Street tree with tree well
- Fire Hydrant
- Existing Curb Line
- Existing Tree



Nuuanu Ave Proposed Improvements Alternative 3

Legend:

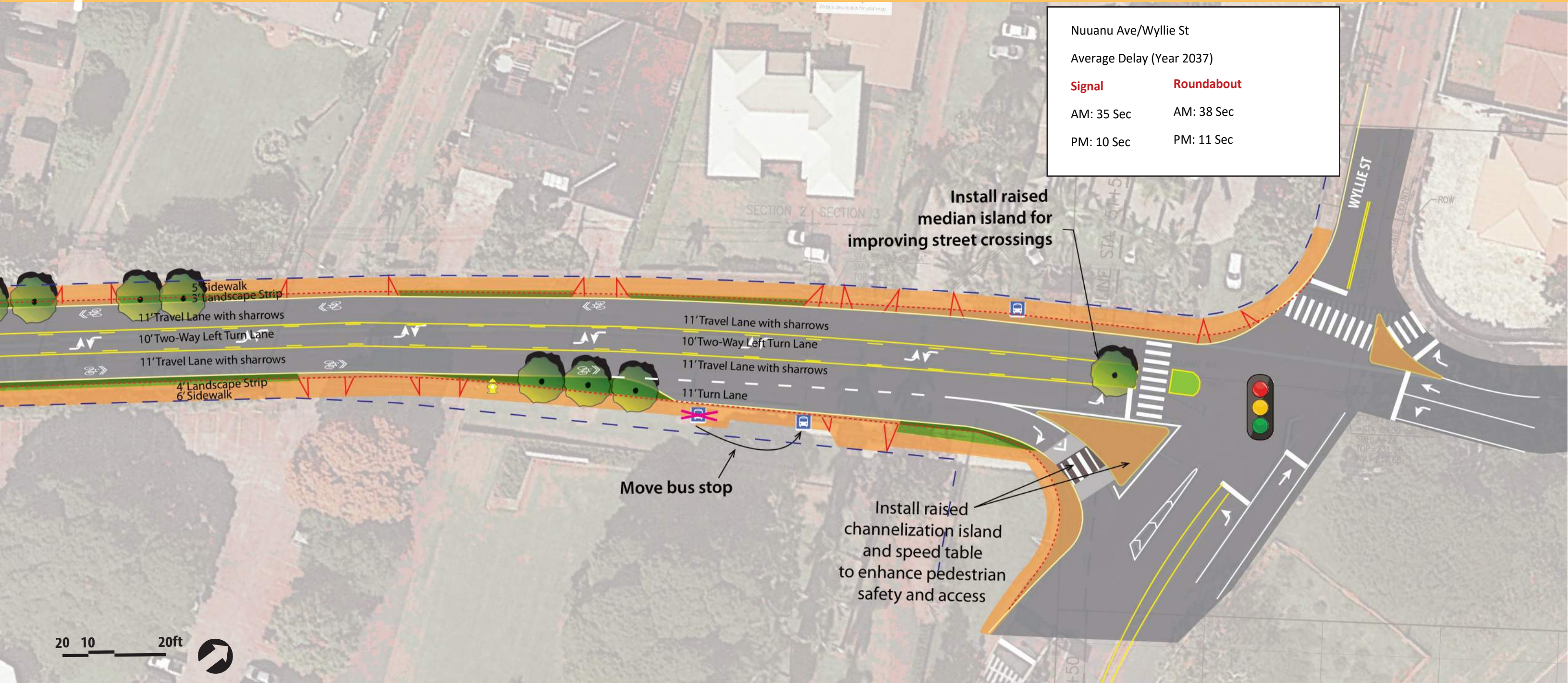
- | | | | | | | | |
|--|-------------------------|--|-------------------------------|--|---|--|---|
| | Signalized Intersection | | Retain existing parking spot | | Roadway (Gray) with Crosswalk and Stop Lines (Bold White) | | Sidewalk (Orange) with Driveway (Redlines) Landscape strip (green) with street tree |
| | Stop Sign | | Removed existing parking spot | | Bike Lane | | Raised Median with Landscaping |
| | Bus Stop | | New parking spot | | Bike Sharrow | | Street tree with tree well |
| | Fire Hydrant | | Existing Curb Line | | Existing Tree | | |



Nuuanu Ave Proposed Improvements Alternative 3 (Preliminary Draft-Currently under revision) 8

Legend:

- | | | | | | | | |
|--|-------------------------|--|-------------------------------|--|---|--|---|
| | Signalized Intersection | | Retain existing parking spot | | Roadway (Gray) with Crosswalk and Stop Lines (Bold White) | | Sidewalk (Orange) with Driveway (Redlines) Landscape strip (green) with street tree |
| | Stop Sign | | Removed existing parking spot | | Bike Lane | | Raised Median with Landscaping |
| | Bus Stop | | New parking spot | | Bike Sharrow | | Street tree with tree well |
| | Fire Hydrant | | Existing Curb Line | | | | Existing Tree |



Nuuanu Ave Proposed Improvements Alternative 3 (Preliminary Draft-Currently under revision)

Legend:

Signalized Intersection	Retain existing parking spot	Roadway (Gray) with Crosswalk and Stop Lines (Bold White)	Sidewalk (Orange) with Driveway (Redlines) Landscape strip (green) with street tree
Stop Sign	Removed existing parking spot	Bike Lane	Raised Median with Landscaping
Bus Stop	New parking spot	Bike Sharrow	Street tree with tree well
Fire Hydrant	Existing Curb Line		Existing Tree