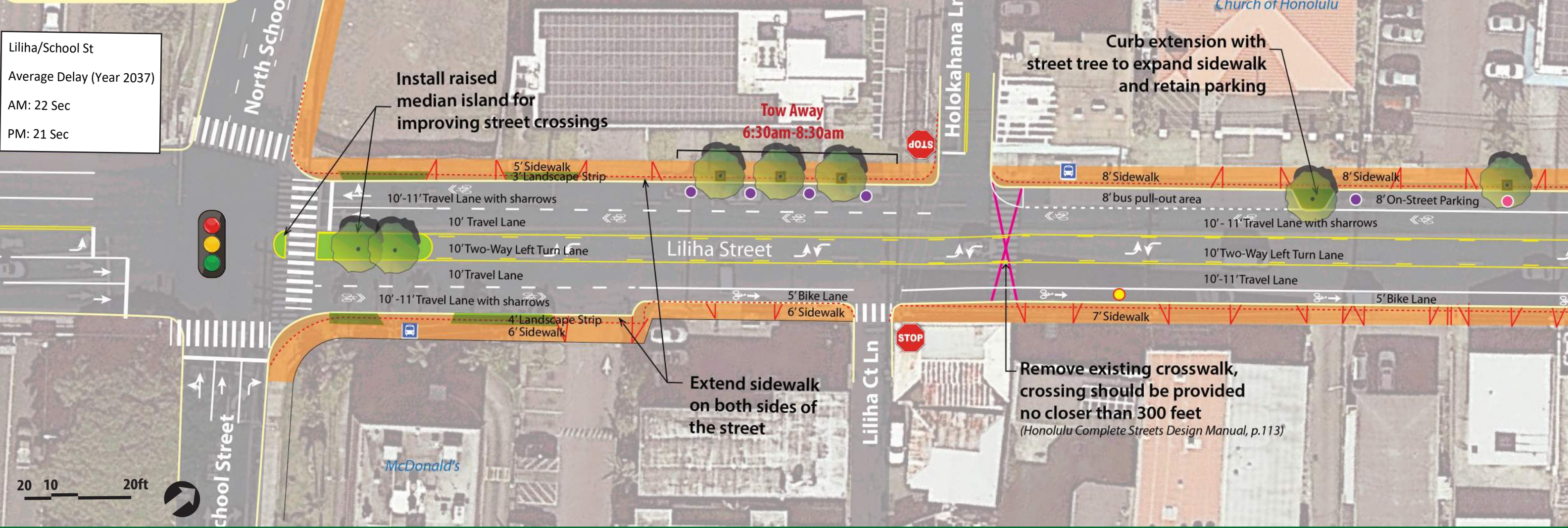


Convert Liliha Street to Road Diet; adding Bike Lane on Diamond head Side of the Street; adding bike sharrow on Ewa side of the street

Liliha/School St
Average Delay (Year 2037)
AM: 22 Sec
PM: 21 Sec

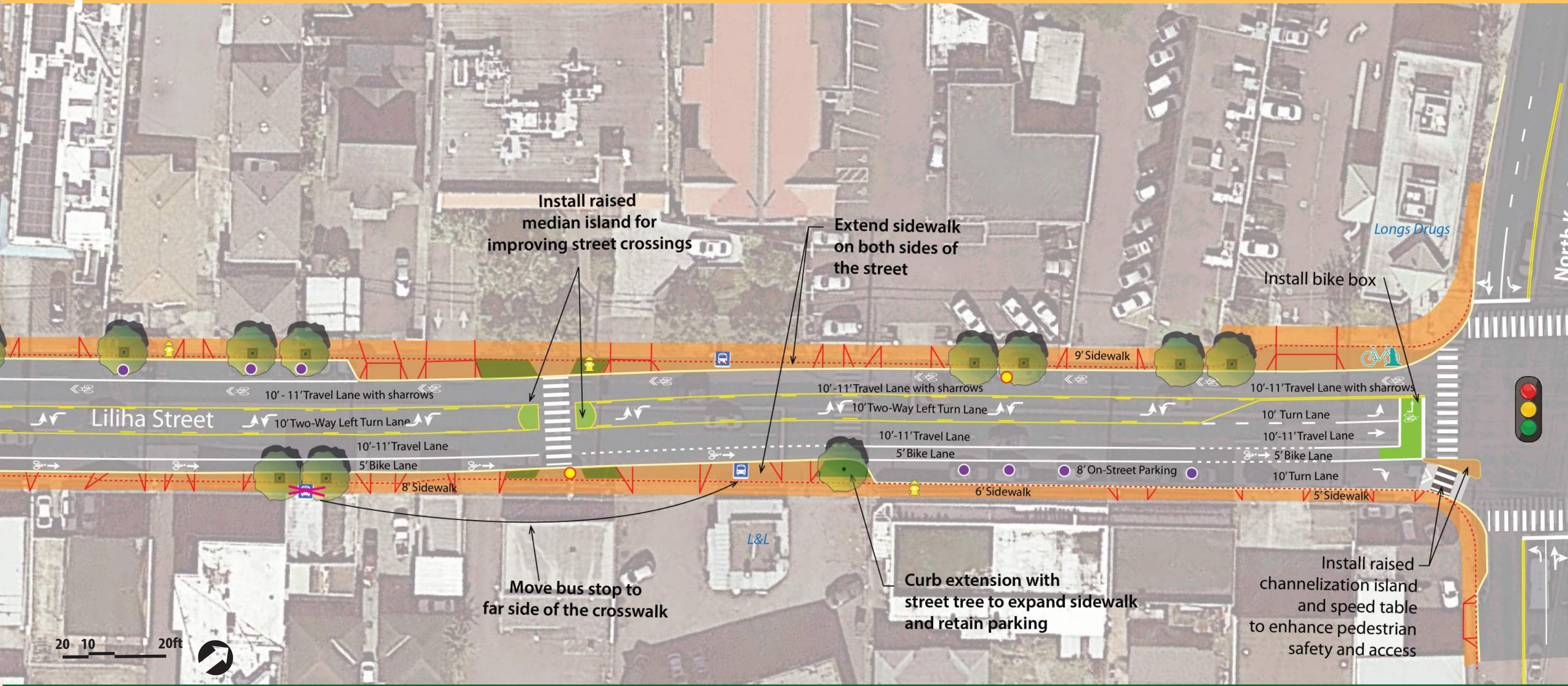
Number of Parking spots		
School St to Kuakini St	Before	After
WB (toward Makai)	9	9
EB (toward Mauka)	6	4



Liliha Street Proposed Improvements Alternative 1 1

Legend:

Signalized Intersection	Retain existing parking spot	Roadway (Gray) with Crosswalk and Stop Lines (Bold White)	Sidewalk (Orange) with Driveway (Redlines) Landscape strip (green) with street tree
Stop Sign	Removed existing parking spot	Bike Lane	Street tree with tree well
Bus Stop	New parking spot	Bike Sharrow	Raised Median with Landscaping
Fire Hydrant	Existing Curb Line		



Liliha Street Proposed Improvements Alternative 1 2

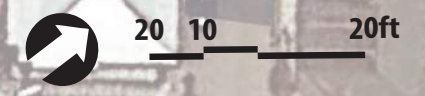
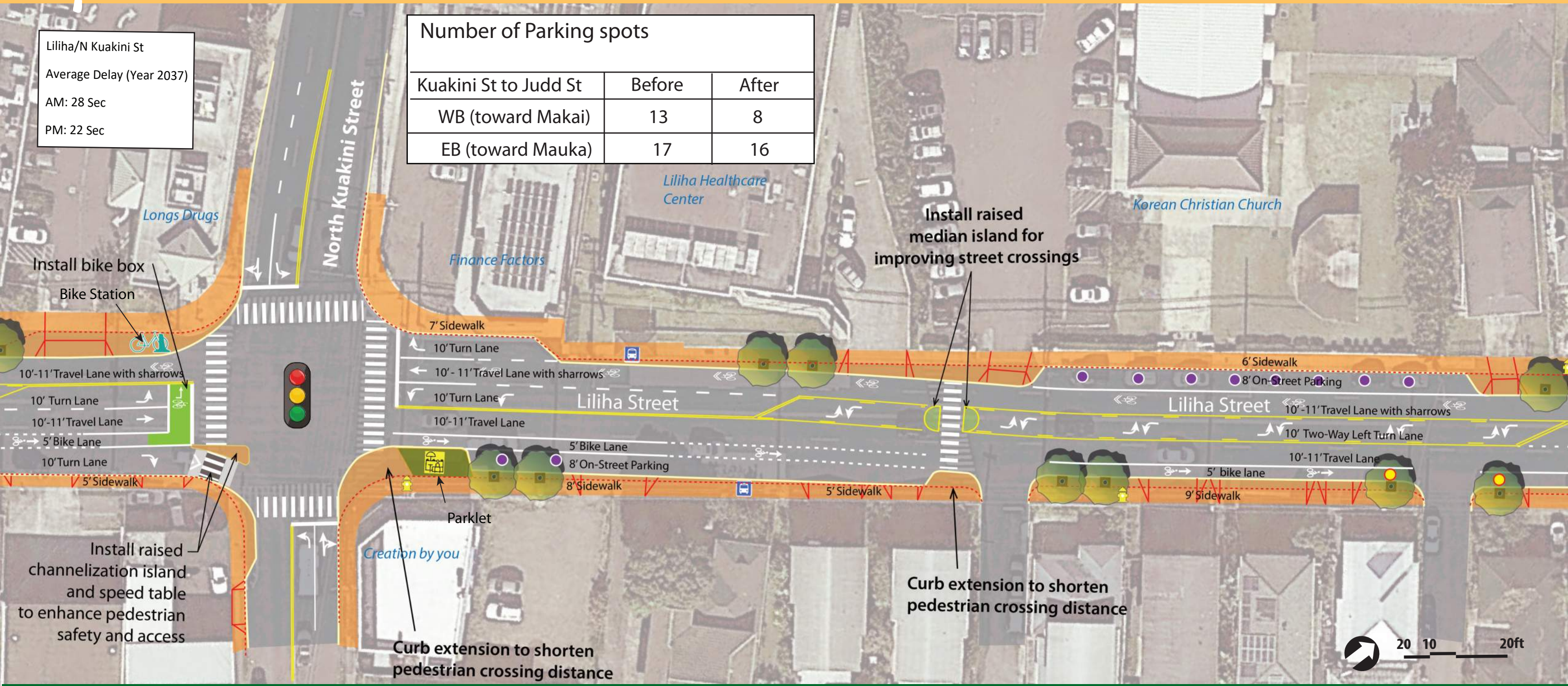
Legend:

- | | | | | | | | |
|--|-------------------------|--|-------------------------------|--|---|--|---|
| | Signalized Intersection | | Retain existing parking spot | | Roadway (Gray) with Crosswalk and Stop Lines (Bold White) | | Sidewalk (Orange) with Driveway (Redlines) Landscape strip (green) with street tree |
| | Stop Sign | | Removed existing parking spot | | Bike Lane | | Street tree with tree well |
| | Bus Stop | | New parking spot | | Bike Sharrow | | Raised Median with Landscaping |
| | Fire Hydrant | | Existing Curb Line | | | | |



Liliha/N Kuakini St
 Average Delay (Year 2037)
 AM: 28 Sec
 PM: 22 Sec

Number of Parking spots		
Kuakini St to Judd St	Before	After
WB (toward Makai)	13	8
EB (toward Mauka)	17	16



Liliha Street Proposed Improvements Alternative 1 3

Legend:

- Signalized Intersection
- Retain existing parking spot
- Roadway (Gray) with Crosswalk and Stop Lines (Bold White)
- Sidewalk (Orange) with Driveway (Redlines) Landscape strip (green) with street tree
- Stop Sign
- Removed existing parking spot
- Bike Lane
- Street tree with tree well
- Bus Stop
- New parking spot
- Bike Sharrow
- Fire Hydrant
- Existing Curb Line
- Raised Median with Landscaping



Liliha Street Proposed Improvements Alternative 1 4

Legend:








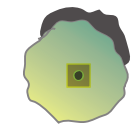






- | | | | | | | | |
|--|-------------------------|--|-------------------------------|--|---|--|---|
| | Signalized Intersection | | Retain existing parking spot | | Roadway (Gray) with Crosswalk and Stop Lines (Bold White) | | Sidewalk (Orange) with Driveway (Redlines) Landscape strip (green) with street tree |
| | Stop Sign | | Removed existing parking spot | | Bike Lane | | Street tree with tree well |
| | Bus Stop | | New parking spot | | Bike Sharrow | | Raised Median with Landscaping |
| | Fire Hydrant | | Existing Curb Line | | | | |



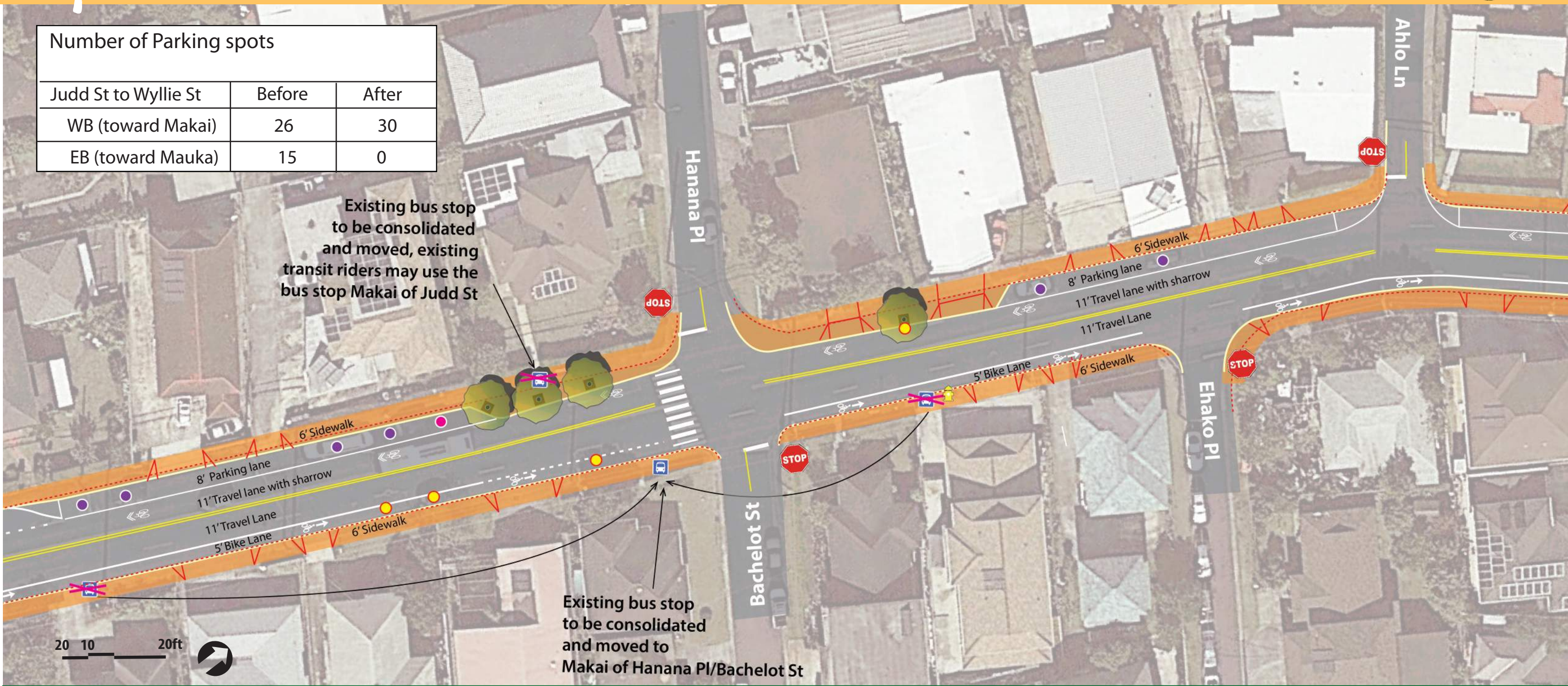
Liliha/Judd St	
Average Delay (Year 2037)	
Signal	
AM:	29 Sec
PM:	15 Sec
Roundabout	
AM:	25 Sec
PM:	11 Sec

Liliha Street Proposed Improvements Alternative 1

Legend:

-  Signalized Intersection
-  Retain existing parking spot
-  Roadway (Gray) with Crosswalk and Stop Lines (Bold White)
-  Sidewalk (Orange) with Driveway (Redlines) Landscape strip (green) with street tree
-  Stop Sign
-  Removed existing parking spot
-  Bike Lane
-  Street tree with tree well
-  Bus Stop
-  New parking spot
-  Bike Sharrow
-  Raised Median with Landscaping
-  Fire Hydrant
-  Existing Curb Line

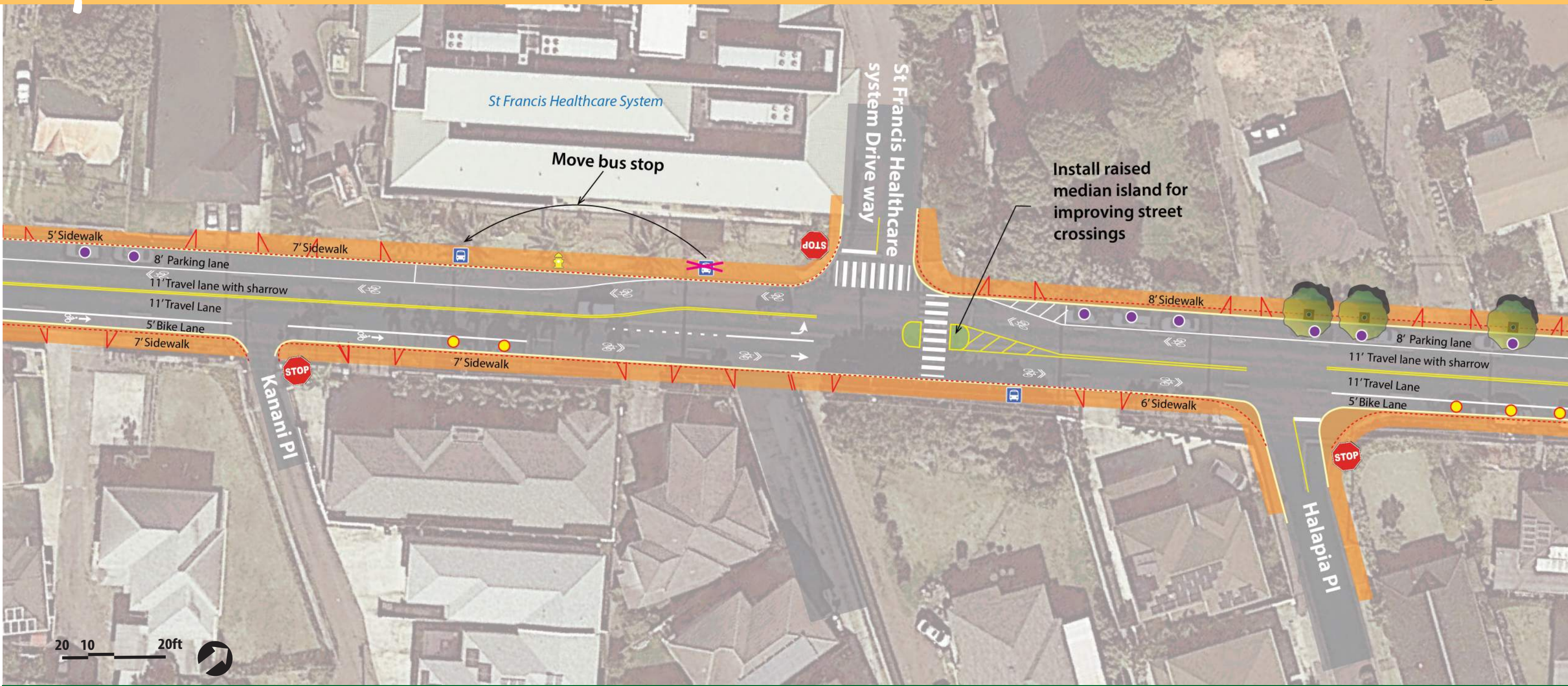
Number of Parking spots		
Judd St to Wyllie St	Before	After
WB (toward Makai)	26	30
EB (toward Mauka)	15	0



Liliha Street Proposed Improvements Alternative 1 6

Legend:

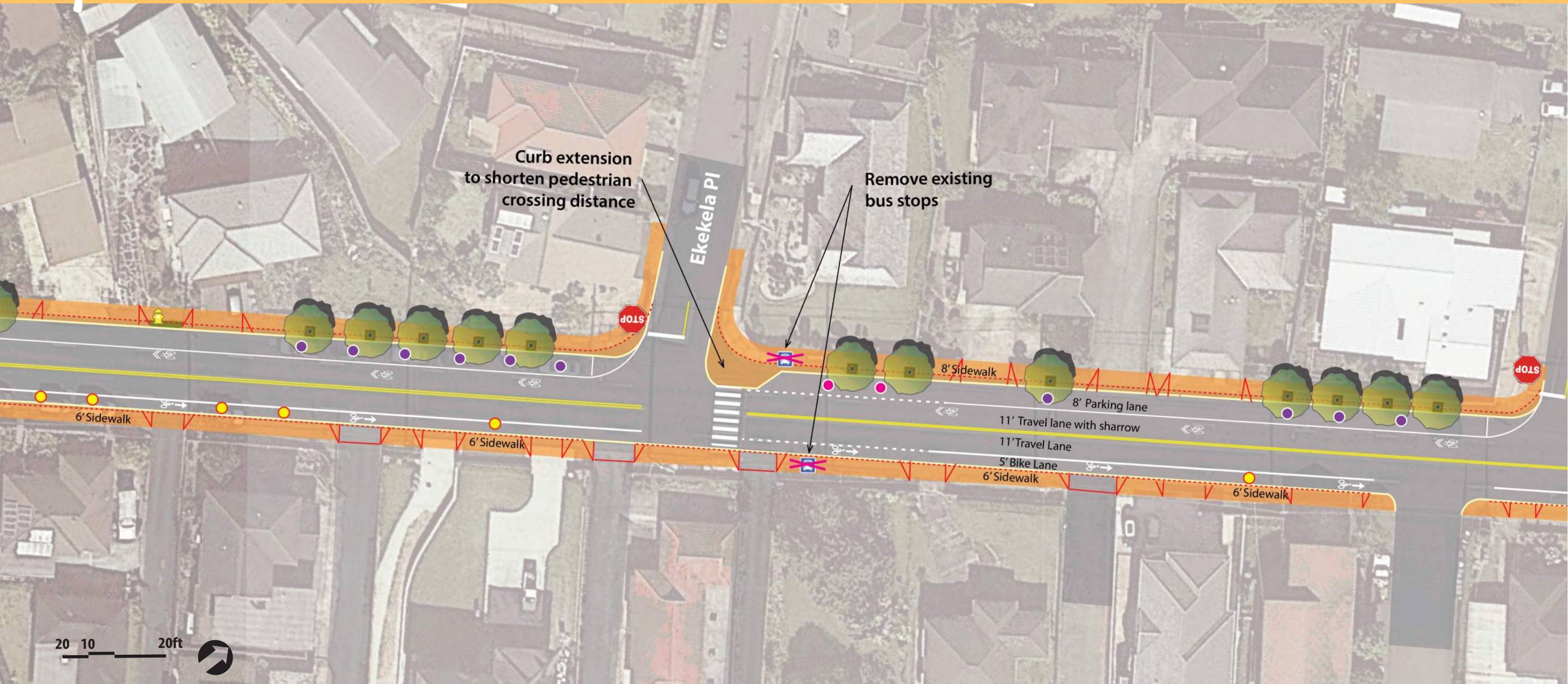
- Signalized Intersection
- Retain existing parking spot
- Roadway (Gray) with Crosswalk and Stop Lines (Bold White)
- Sidewalk (Orange) with Driveway (Redlines) Landscape strip (green) with street tree
- Stop Sign
- Removed existing parking spot
- Bike Lane
- Street tree with tree well
- Bus Stop
- New parking spot
- Bike Sharrow
- Fire Hydrant
- Existing Curb Line
- Raised Median with Landscaping



Liliha Street Proposed Improvements Alternative 1 7

Legend:

- | | | | | | | | |
|--|-------------------------|--|-------------------------------|--|---|--|---|
| | Signalized Intersection | | Retain existing parking spot | | Roadway (Gray) with Crosswalk and Stop Lines (Bold White) | | Sidewalk (Orange) with Driveway (Redlines) Landscape strip (green) with street tree |
| | Stop Sign | | Removed existing parking spot | | Bike Lane | | Street tree with tree well |
| | Bus Stop | | New parking spot | | Bike Sharrow | | Raised Median with Landscaping |
| | Fire Hydrant | | Existing Curb Line | | | | |



Liliha Street Proposed Improvements Alternative 1

Legend:

- | | | | | | | | |
|--|-------------------------|--|-------------------------------|--|---|--|---|
| | Signalized Intersection | | Retain existing parking spot | | Roadway (Gray) with Crosswalk and Stop Lines (Bold White) | | Sidewalk (Orange) with Driveway (Redlines) Landscape strip (green) with street tree |
| | Stop Sign | | Removed existing parking spot | | Bike Lane | | Street tree with tree well |
| | Bus Stop | | New parking spot | | Bike Sharrow | | Raised Median with Landscaping |
| | Fire Hydrant | | Existing Curb Line | | | | |



Liliha Street Proposed Improvements Alternative 1

Legend:

	Signalized Intersection		Retain existing parking spot		Roadway (Gray) with Crosswalk and Stop Lines (Bold White)		Sidewalk (Orange) with Driveway (Redlines) Landscape strip (green) with street tree
	Stop Sign		Removed existing parking spot		Bike Lane		Street tree with tree well
	Bus Stop		New parking spot		Bike Sharrow		Raised Median with Landscaping
	Fire Hydrant		Existing Curb Line				