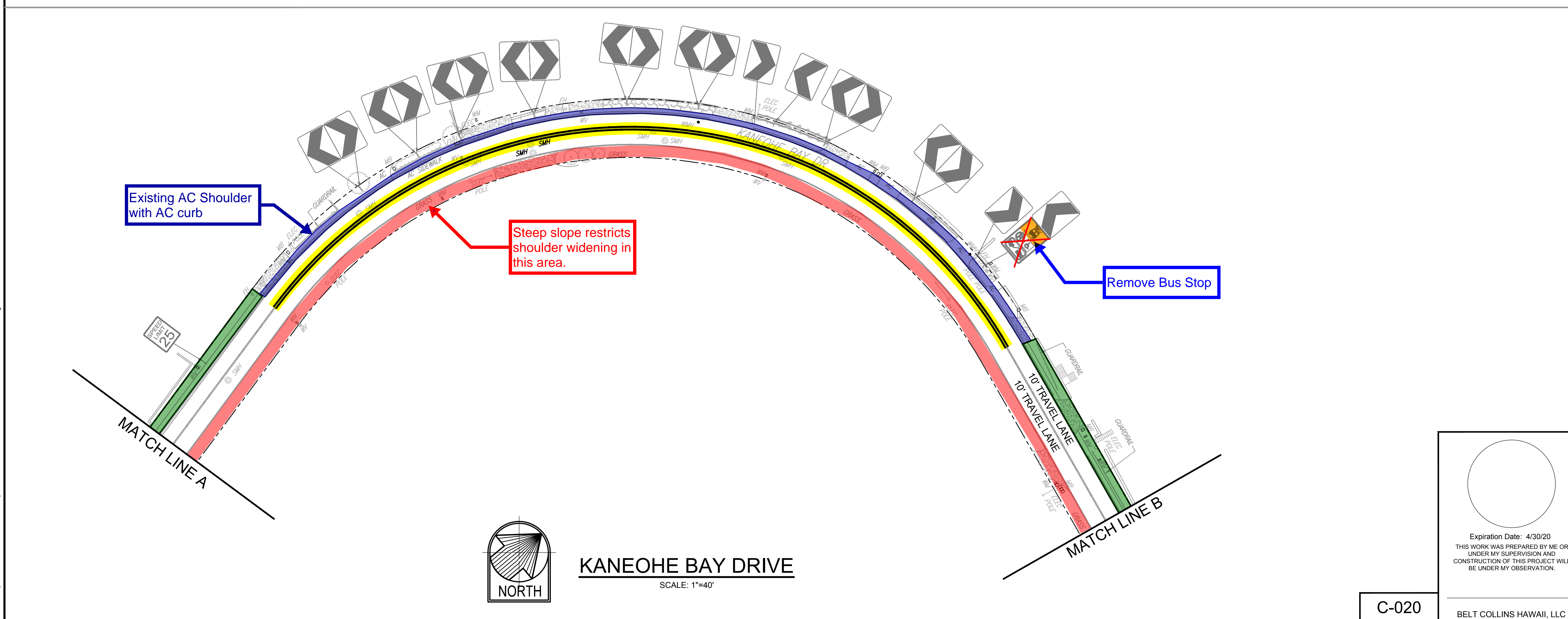


- LEGEND**
- Opportunities for roadway shoulder improvements
  - Existing Sidewalk or Shoulder
  - Striping Improvement
  - Milled Rumble Strip next to centerline stripes
  - Roadway improvements restricted due to existing conditions

**KANEOHE BAY DRIVE**  
SCALE: 1"=40'

Drainage swale restricts shoulder widening in this area.

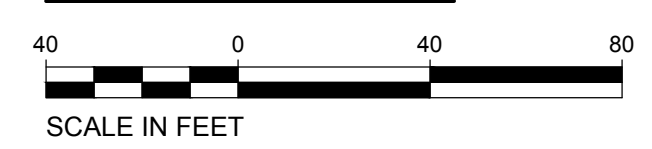


Existing AC Shoulder with AC curb

Steep slope restricts shoulder widening in this area.

Remove Bus Stop

**GRAPHIC SCALE**



REVISION	DATE	BRIEF DESCRIPTION	BY	APPROVED

DEPARTMENT OF TRANSPORTATION SERVICES  
CITY AND COUNTY OF HONOLULU  
COMPLETE STREETS PLANNING  
REHABILITATION OF STREETS UNITS 73A, 73B, AND 73C  
OAHU, HAWAII

**KANEOHE BAY DRIVE - 1**

ENGINEER: LN/JS      DATE: October 2019  
DRAFTSMAN:      SCALE: AS NOTED  
CHK BY: LN      REF:      -

Expiration Date: 4/30/20  
THIS WORK WAS PREPARED BY ME OR UNDER MY SUPERVISION AND CONSTRUCTION OF THIS PROJECT WILL BE UNDER MY OBSERVATION.

C-020

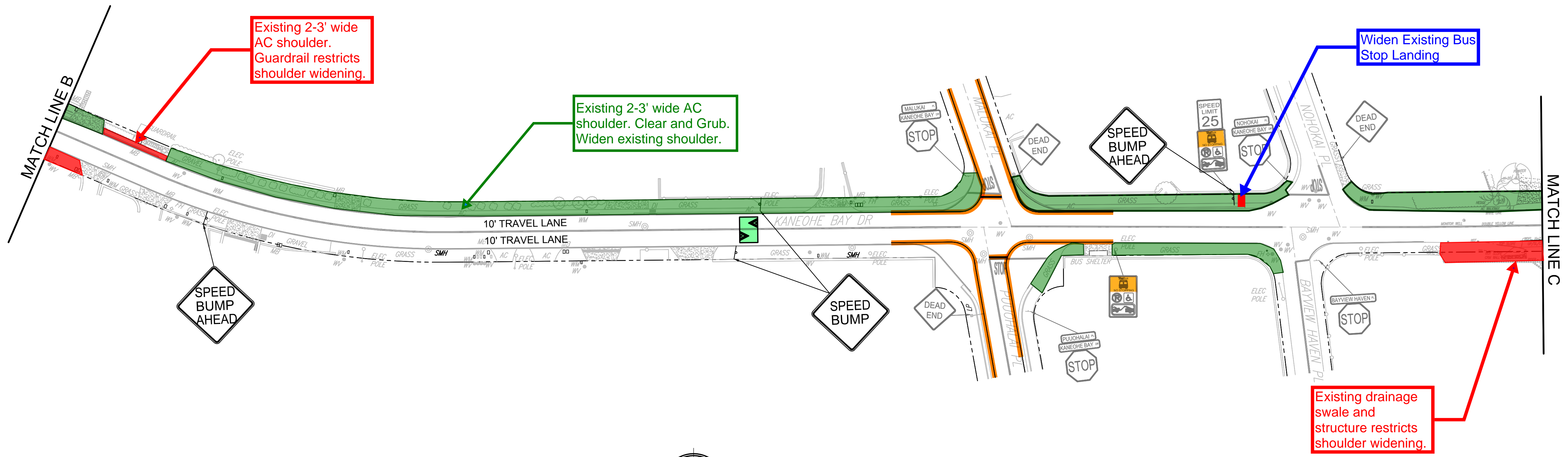
BELT COLLINS HAWAII, LLC

**KANEOHE BAY DRIVE**  
SCALE: 1"=40'

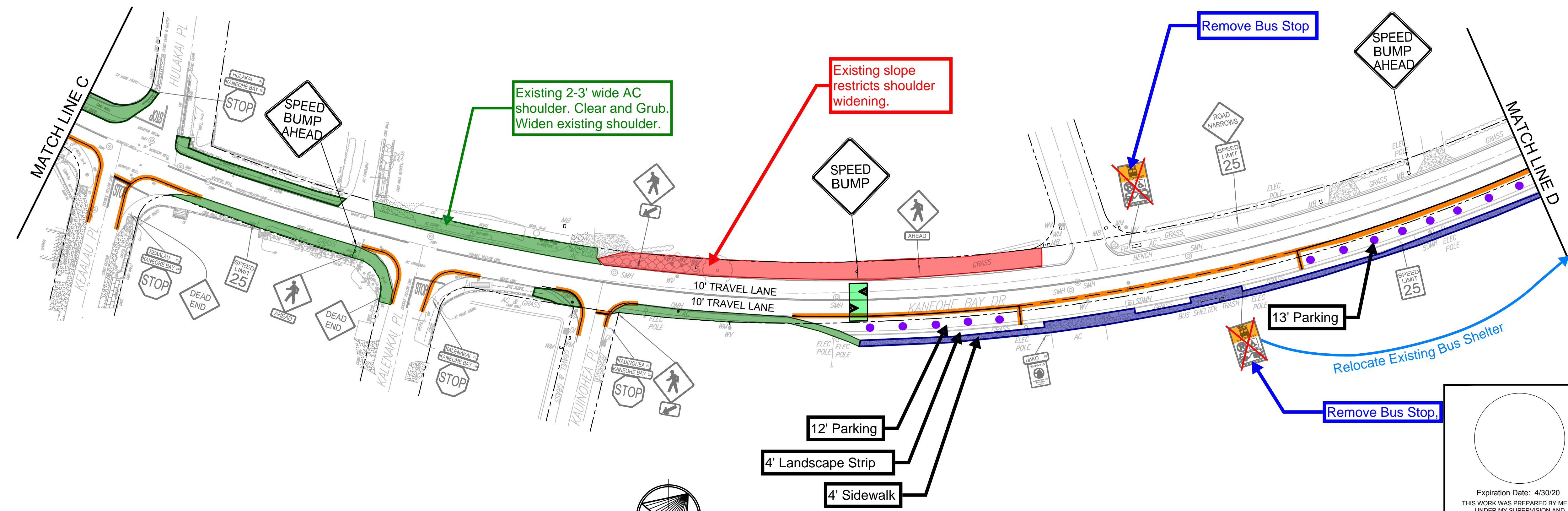
FILE	POCKET	FOLDER	NO.

T:\18\_Con\2020\_11\731\_MDOTS\_CAD\Drawings\Sheets\171030004\_Graphics\CAD\Sheets - Kaneohe\K-020 - KANEOHE BAY DRIVE - 1.dwg

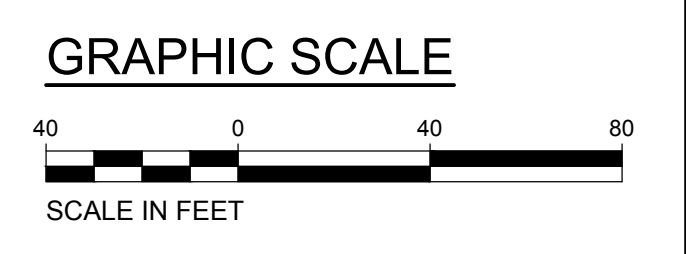
- LEGEND**
- Opportunities for roadway shoulder improvements
  - Existing Sidewalk/Shoulder
  - Speed Lump
  - Striping Improvement
  - Retain Existing Parking Spot
  - Bus Landing Area
  - Roadway improvements restricted due to existing conditions



**KANEHOE BAY DRIVE**  
 SCALE: 1"=40'



**KANEHOE BAY DRIVE**  
 SCALE: 1"=40'



REVISION	DATE	BRIEF DESCRIPTION	BY	APPROVED

DEPARTMENT OF TRANSPORTATION SERVICES  
CITY AND COUNTY OF HONOLULU

COMPLETE STREETS PLANNING  
REHABILITATION OF STREETS UNITS 73A, 73B, AND 73C  
OAHU, HAWAII

**KANEHOE BAY DRIVE - 2**

ENGINEER: LN/JJS      DATE: October 2019  
 DRAFTSMAN:      SCALE: AS NOTED  
 CHK BY: LN      REF:     

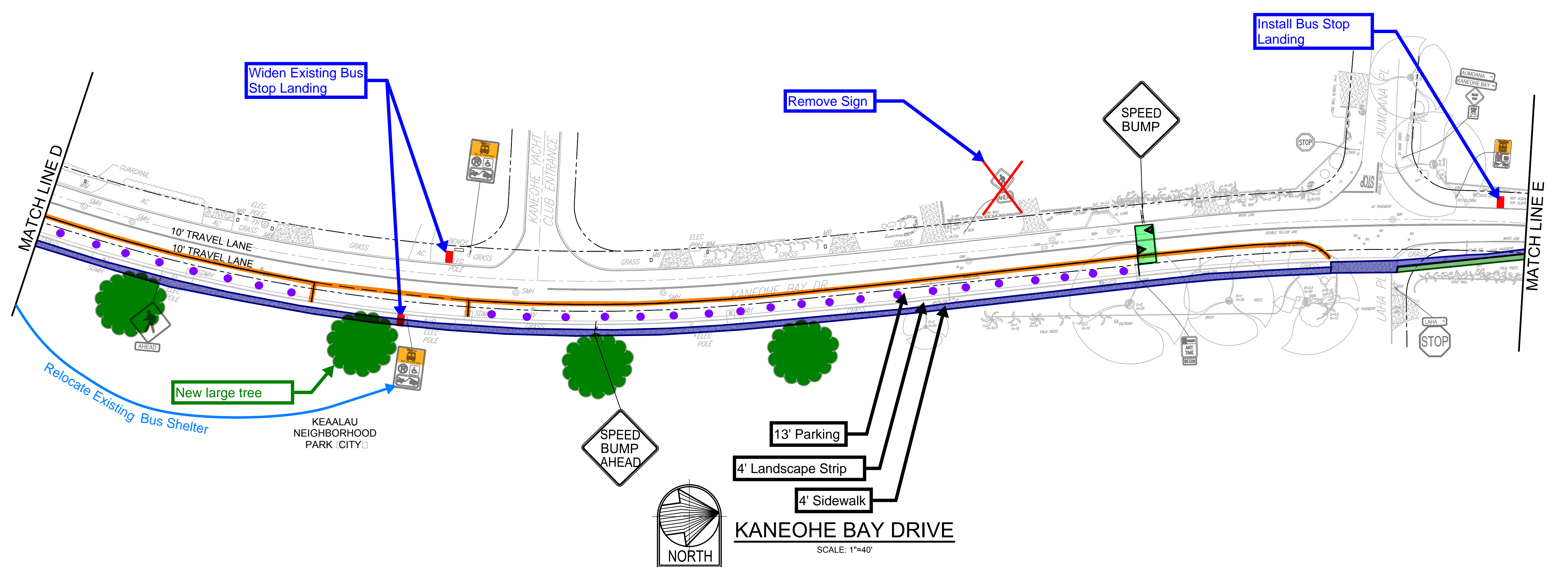
Expiration Date: 4/30/20  
 THIS WORK WAS PREPARED BY ME OR  
 UNDER MY SUPERVISION AND  
 CONSTRUCTION OF THIS PROJECT WILL  
 BE UNDER MY OBSERVATION.

C-021

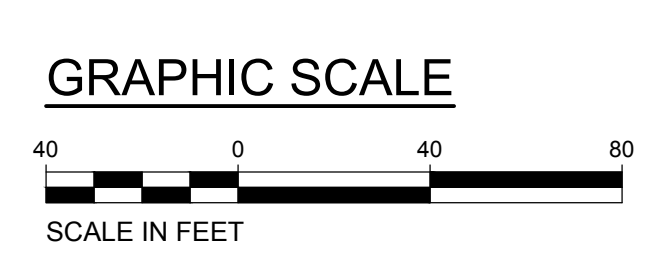
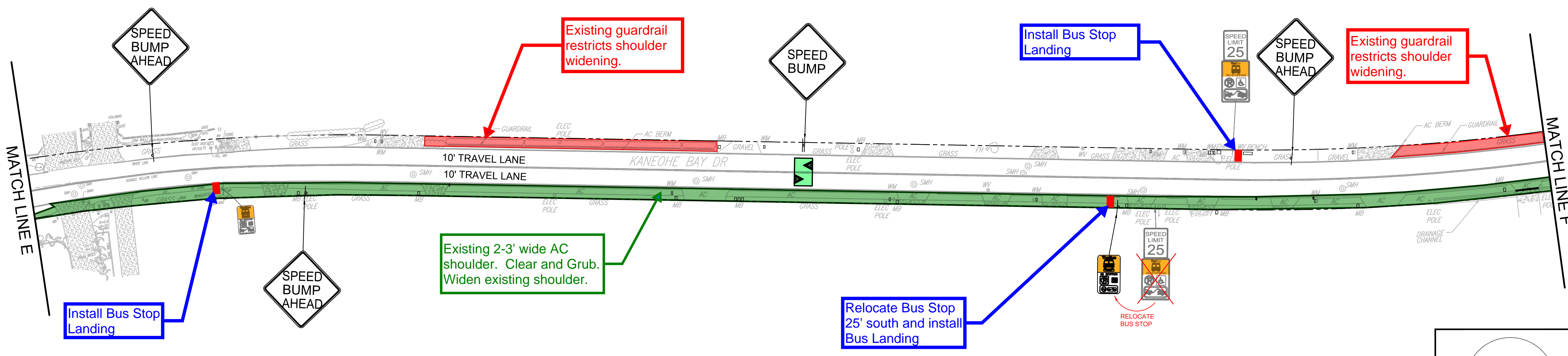
BELT COLLINS HAWAII, LLC

FILE	POCKET	FOLDER	NO.

File: 18\_Con\_020 - 11.7.21  
 M:\ITS\_Cad\Drawings\18\1800004\_Graphics\CAD\Drawings - Kaneohe Bay Drive - 2.dwg



- LEGEND**
- Opportunities for roadway shoulder improvements
  - Existing Sidewalk/Shoulder
  - Speed Lump
  - Striping Improvement
  - Retain Existing Parking Spot
  - Bus Landing Area
  - Roadway improvements restricted due to existing conditions
  - New large tree



REVISION	DATE	BRIEF DESCRIPTION	BY	APPROVED

DEPARTMENT OF TRANSPORTATION SERVICES  
CITY AND COUNTY OF HONOLULU

COMPLETE STREETS PLANNING  
REHABILITATION OF STREETS UNITS 73A, 73B, AND 73C  
OAHU, HAWAII

**KANEOHE BAY DRIVE - 3**

ENGINEER: LN/JS      DATE: October 2019  
DRAFTSMAN:      SCALE: AS NOTED  
CHK BY: LN      REF:     

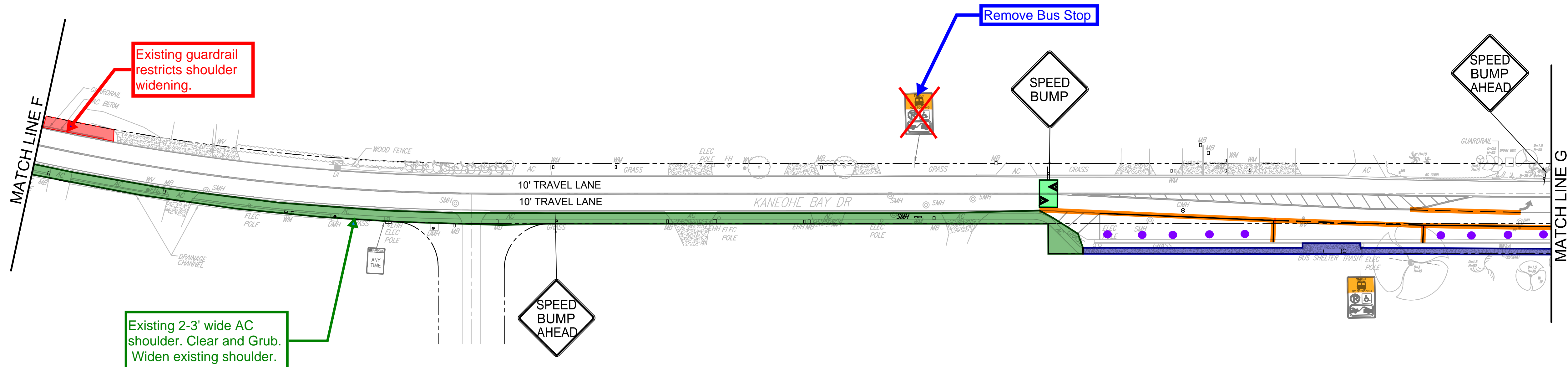
Expiration Date: 4/30/20  
THIS WORK WAS PREPARED BY ME OR  
UNDER MY SUPERVISION AND  
CONSTRUCTION OF THIS PROJECT WILL  
BE UNDER MY OBSERVATION.

C-022

BELT COLLINS HAWAII, LLC

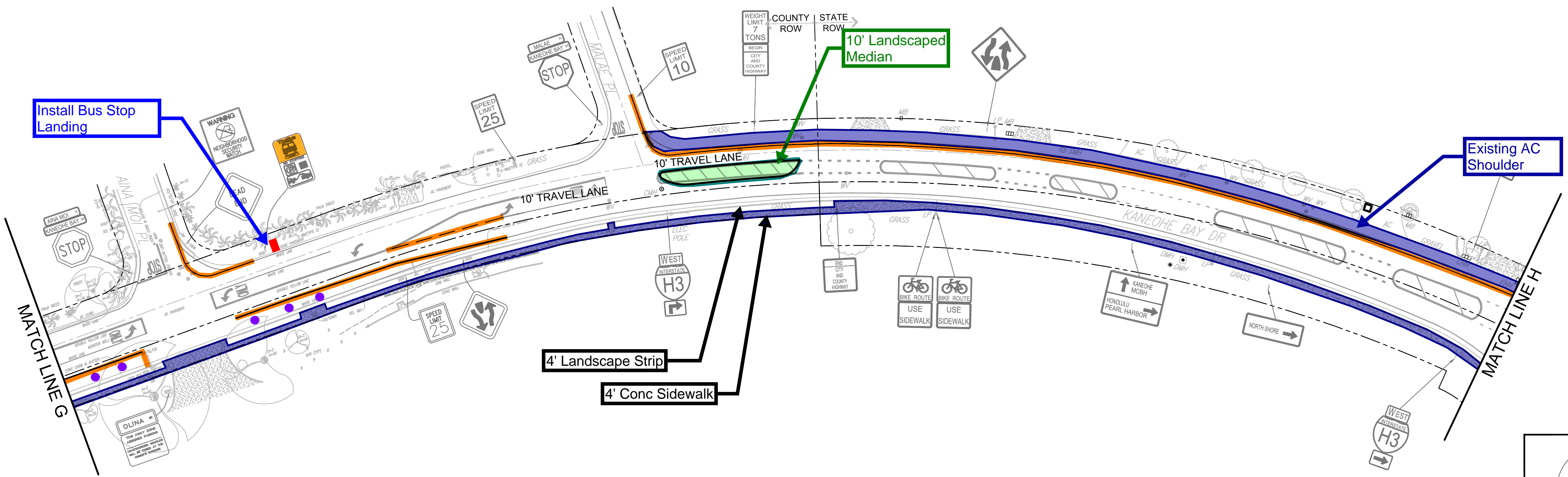
T:\18\_Lin\_0250 - 1118.dwg  
M:\DTS\_Cad\Projects\Streets\0177\030004\_Graphics\CAD\Sheets - Kaneohe\02 - KANEOHE BAY DRIVE - 3.dwg

**KANEOHE BAY DRIVE**  
SCALE: 1"=40'

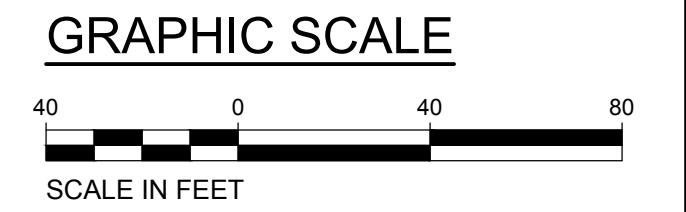



**KANEOHE BAY DRIVE**  
 SCALE: 1"=40'

- LEGEND**
- Opportunities for roadway shoulder improvements
  - Existing Sidewalk/Shoulder
  - Speed Lump
  - Striping Improvement
  - Retain Existing Parking Spot
  - Bus Landing Area
  - Landscaped Median
  - Roadway improvements restricted due to existing conditions




**KANEOHE BAY DRIVE**  
 SCALE: 1"=40'

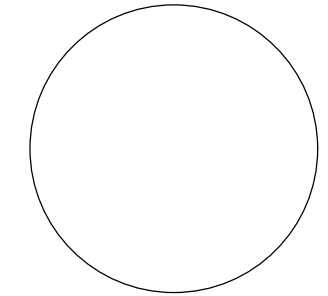


REVISION	DATE	BRIEF DESCRIPTION	BY	APPROVED

DEPARTMENT OF TRANSPORTATION SERVICES  
 CITY AND COUNTY OF HONOLULU  
**COMPLETE STREETS PLANNING**  
 REHABILITATION OF STREETS UNITS 73A, 73B, AND 73C  
 OAHU, HAWAII

**KANEOHE BAY DRIVE - 4**

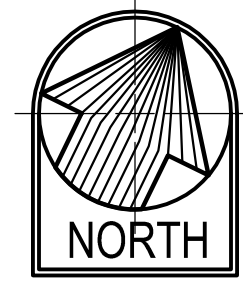
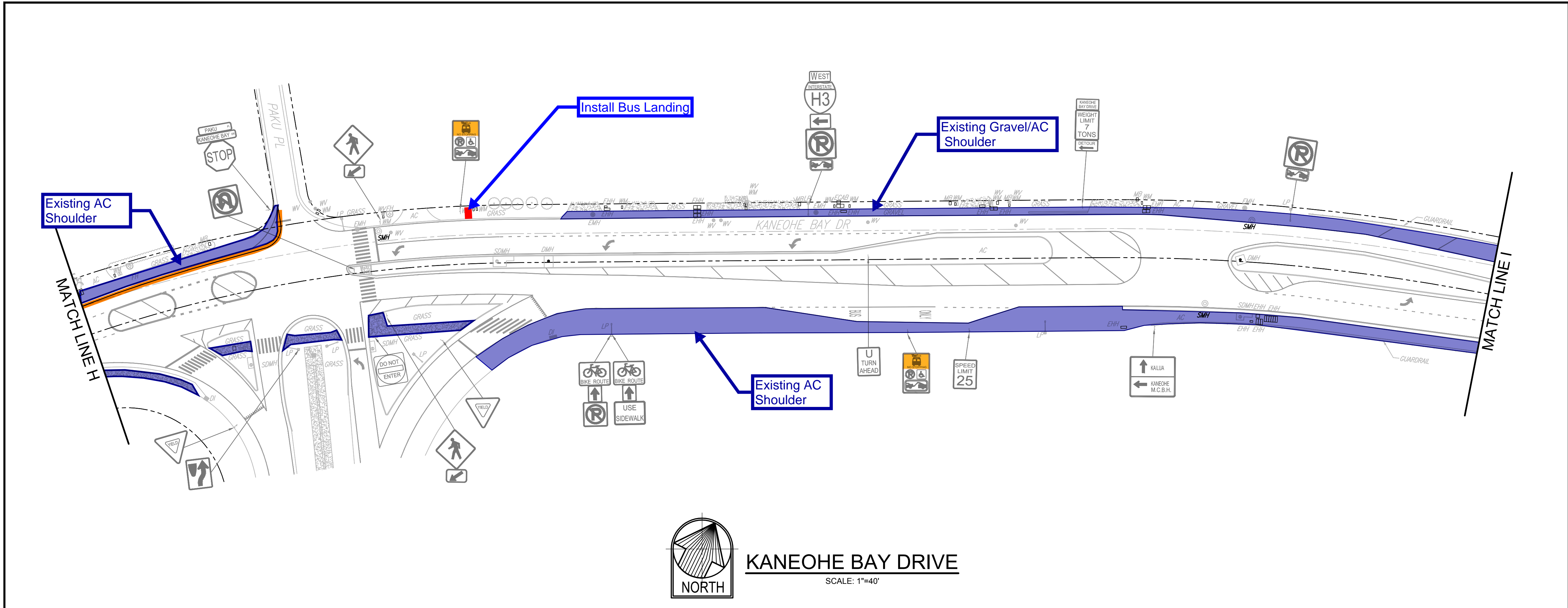
ENGINEER: LN/JS      DATE: October 2019  
 DRAFTSMAN:      SCALE: AS NOTED  
 CHK BY: LN      REF:

  
 Expiration Date: 4/30/20  
 THIS WORK WAS PREPARED BY ME OR  
 UNDER MY SUPERVISION AND  
 CONSTRUCTION OF THIS PROJECT WILL  
 BE UNDER MY OBSERVATION.  
 BELT COLLINS HAWAII, LLC

C-023

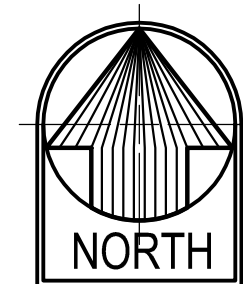
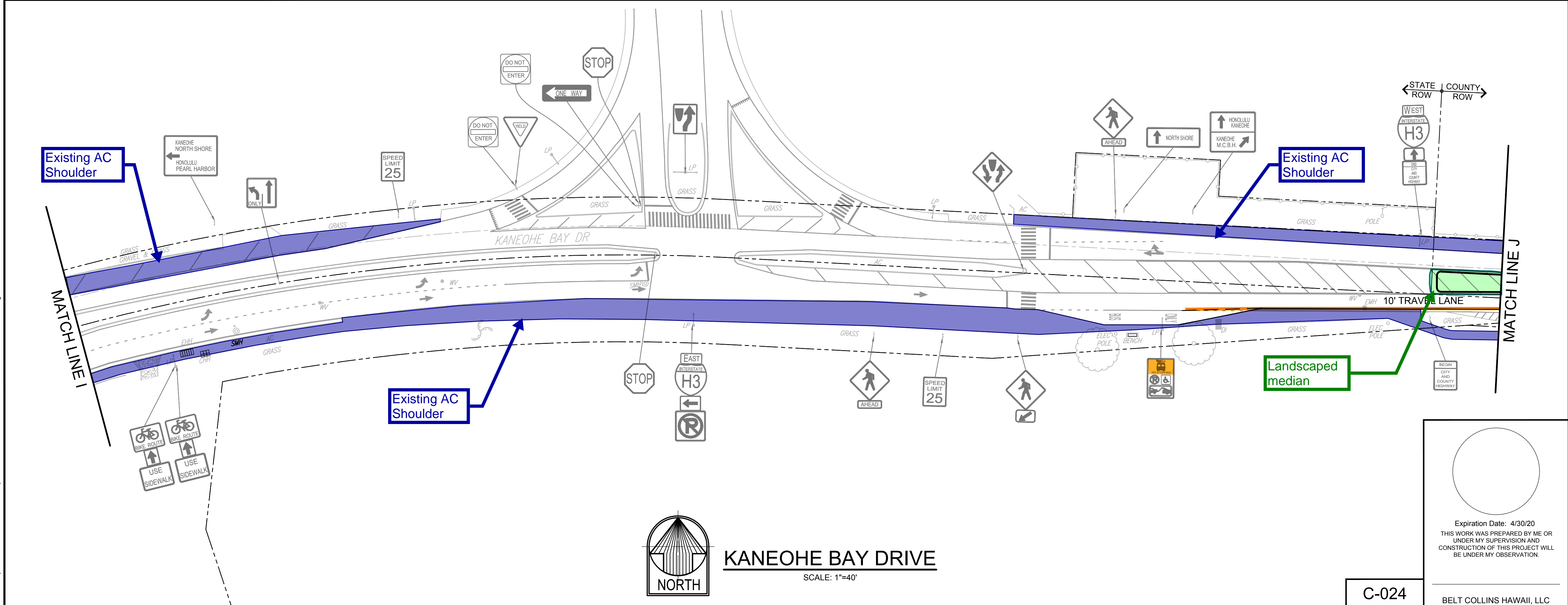
FILE	POCKET	FOLDER	NO.

T:\18\_Lin\_0250 - 1118.mxd  
 M:\ITS\_Cad\pdr\Sheets\0177\030004\_Graphics\CAD\Sheets - Kaneohe\023 - KANEOHE BAY DRIVE - 4.dwg

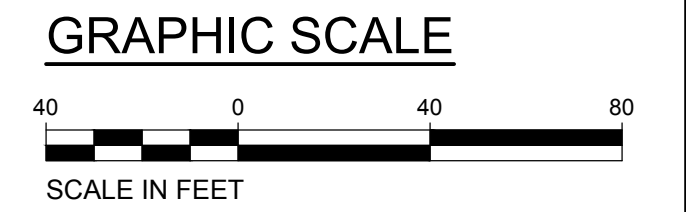


**KANEOHE BAY DRIVE**  
SCALE: 1"=40'

- LEGEND**
- Existing Sidewalk/Shoulder
  - Striping Improvement
  - Bus Landing
  - Flexible Delineator Post
  - Landscaped Median



**KANEOHE BAY DRIVE**  
SCALE: 1"=40'



REVISION	DATE	BRIEF DESCRIPTION	BY	APPROVED

DEPARTMENT OF TRANSPORTATION SERVICES  
CITY AND COUNTY OF HONOLULU

COMPLETE STREETS PLANNING  
REHABILITATION OF STREETS UNITS 73A, 73B, AND 73C  
OAHU, HAWAII

**KANEOHE BAY DRIVE - 5**

ENGINEER: LN/JS      DATE: October 2019  
DRAFTSMAN:      SCALE: AS NOTED  
CHK BY: LN      REF:     

Expiration Date: 4/30/20  
THIS WORK WAS PREPARED BY ME OR  
UNDER MY SUPERVISION AND  
CONSTRUCTION OF THIS PROJECT WILL  
BE UNDER MY OBSERVATION.

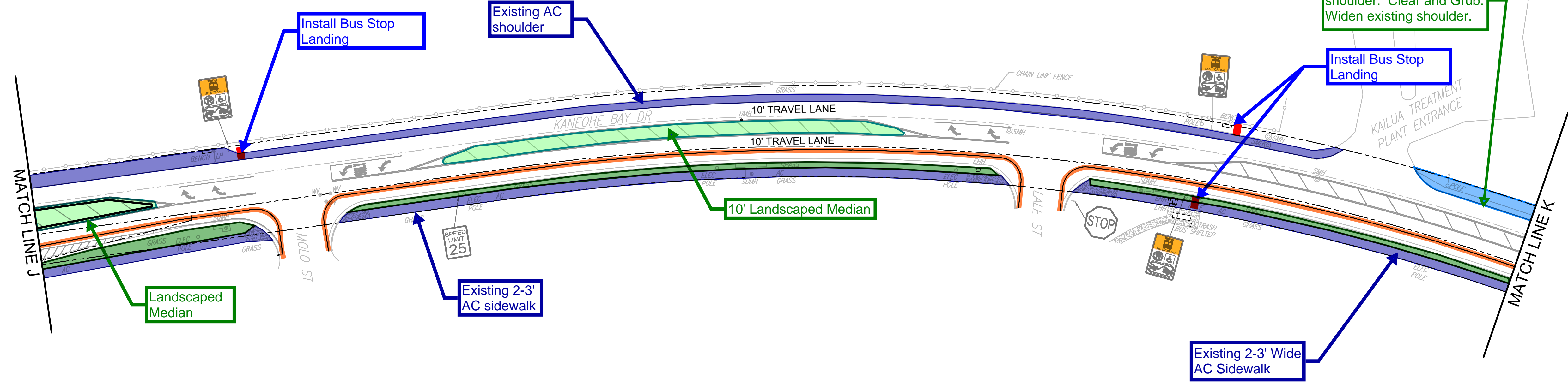
C-024

BELT COLLINS HAWAII, LLC

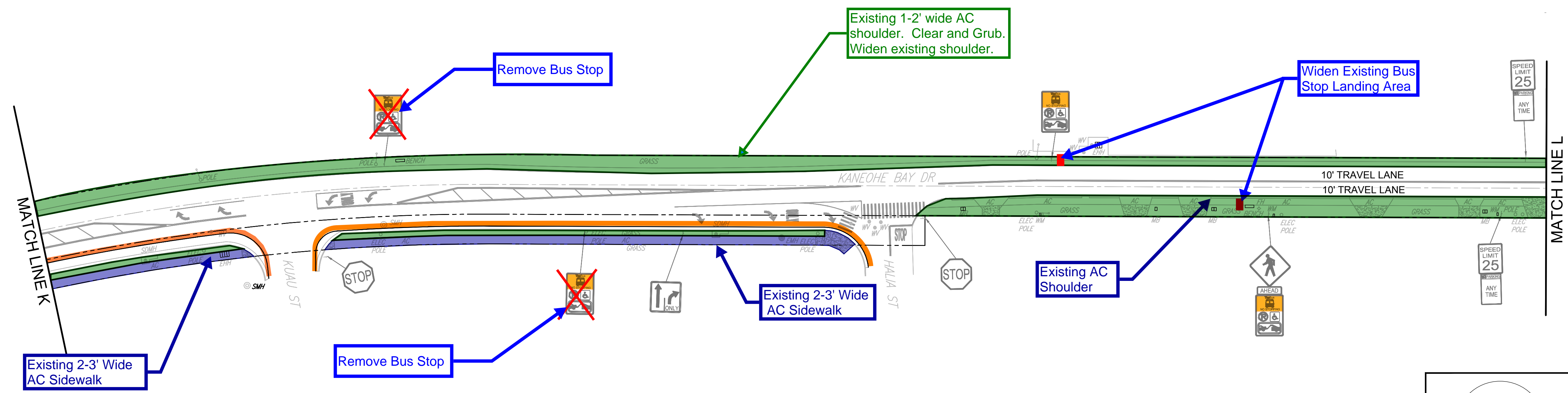
FILE	POCKET	FOLDER	NO.

T:\18\_Con\_0240 - 1111bvt  
 MUDIS Computer Services\2017\03\0104 Graphics\CAD\Sheets - Kaneohe\C-024 - KANEOHE BAY DRIVE - 5.dwg

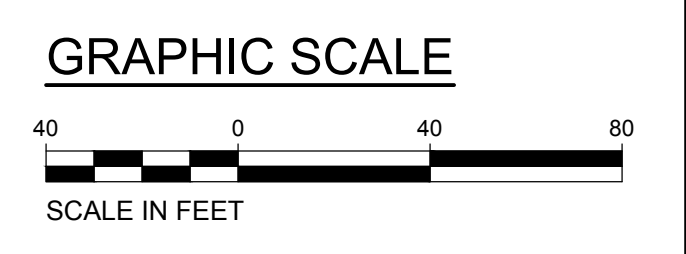
- LEGEND**
- Opportunities for roadway shoulder improvements
  - Existing Sidewalk/Shoulder
  - Striping Improvement
  - Bus Landing
  - Landscaped Median



 **KANEOHE BAY DRIVE**  
SCALE: 1"=40'



 **KANEOHE BAY DRIVE**  
SCALE: 1"=40'



REVISION	DATE	BRIEF DESCRIPTION	BY	APPROVED

DEPARTMENT OF TRANSPORTATION SERVICES  
CITY AND COUNTY OF HONOLULU

COMPLETE STREETS PLANNING  
REHABILITATION OF STREETS UNITS 73A, 73B, AND 73C  
OAHU, HAWAII

**KANEOHE BAY DRIVE - 6**

ENGINEER: LN/JS      DATE: October 2019  
 DRAFTSMAN:      SCALE: AS NOTED  
 CHK BY: LN      REF:     

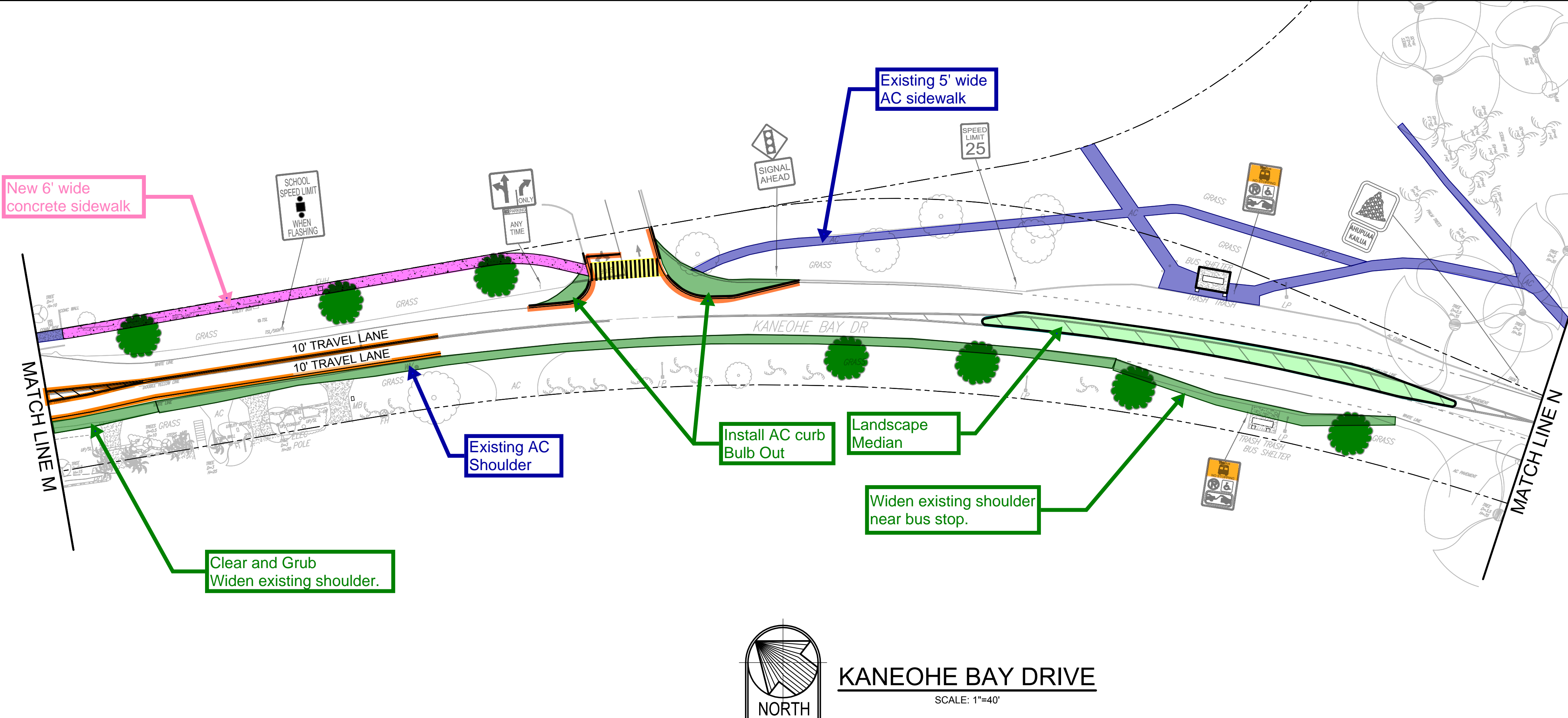
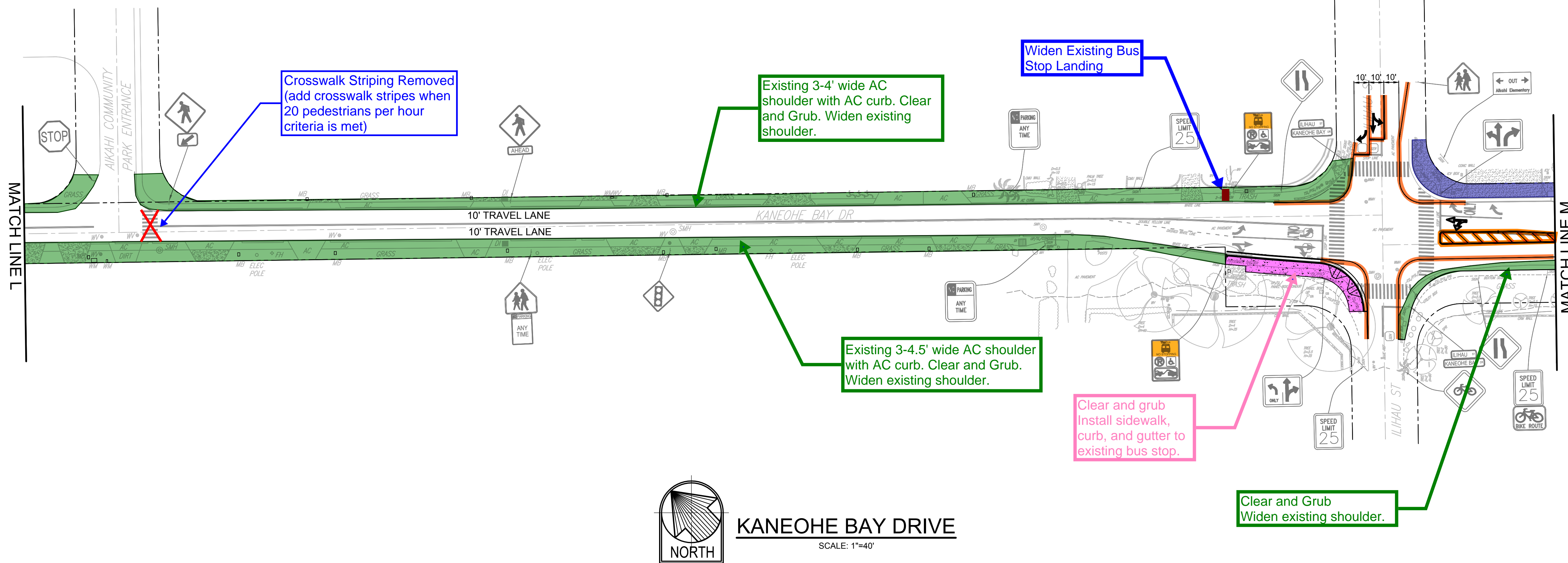
Expiration Date: 4/30/20  
 THIS WORK WAS PREPARED BY ME OR  
 UNDER MY SUPERVISION AND  
 CONSTRUCTION OF THIS PROJECT WILL  
 BE UNDER MY OBSERVATION.

**C-025**

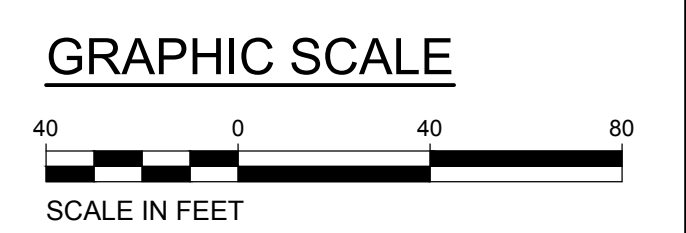
BELT COLLINS HAWAII, LLC

FILE	POCKET	FOLDER	NO.

T:\18\_18\_Con\_025\_1118.dwg  
 M:\ITS\_Cad\Drawings\_Sheets\1771030004\_Graphics\CAD\Drawings - Kaneohe Bay Drive - 6.dwg



- LEGEND**
- Opportunities for roadway shoulder improvements/sidewalk
  - Existing Sidewalk
  - Striping Improvement
  - New Cross Walk
  - Bus Landing
  - New Tree
  - Landscaped Median
  - Concrete Sidewalk



REVISION	DATE	BRIEF DESCRIPTION	BY	APPROVED

DEPARTMENT OF TRANSPORTATION SERVICES  
CITY AND COUNTY OF HONOLULU

COMPLETE STREETS PLANNING  
REHABILITATION OF STREETS UNITS 73A, 73B, AND 73C  
OAHU, HAWAII

**KANEOHE BAY DRIVE - 7**

ENGINEER: LN/JS      DATE: October 2019  
DRAFTSMAN:      SCALE: AS NOTED  
CHK BY: LN      REF:      -

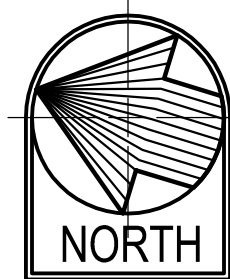
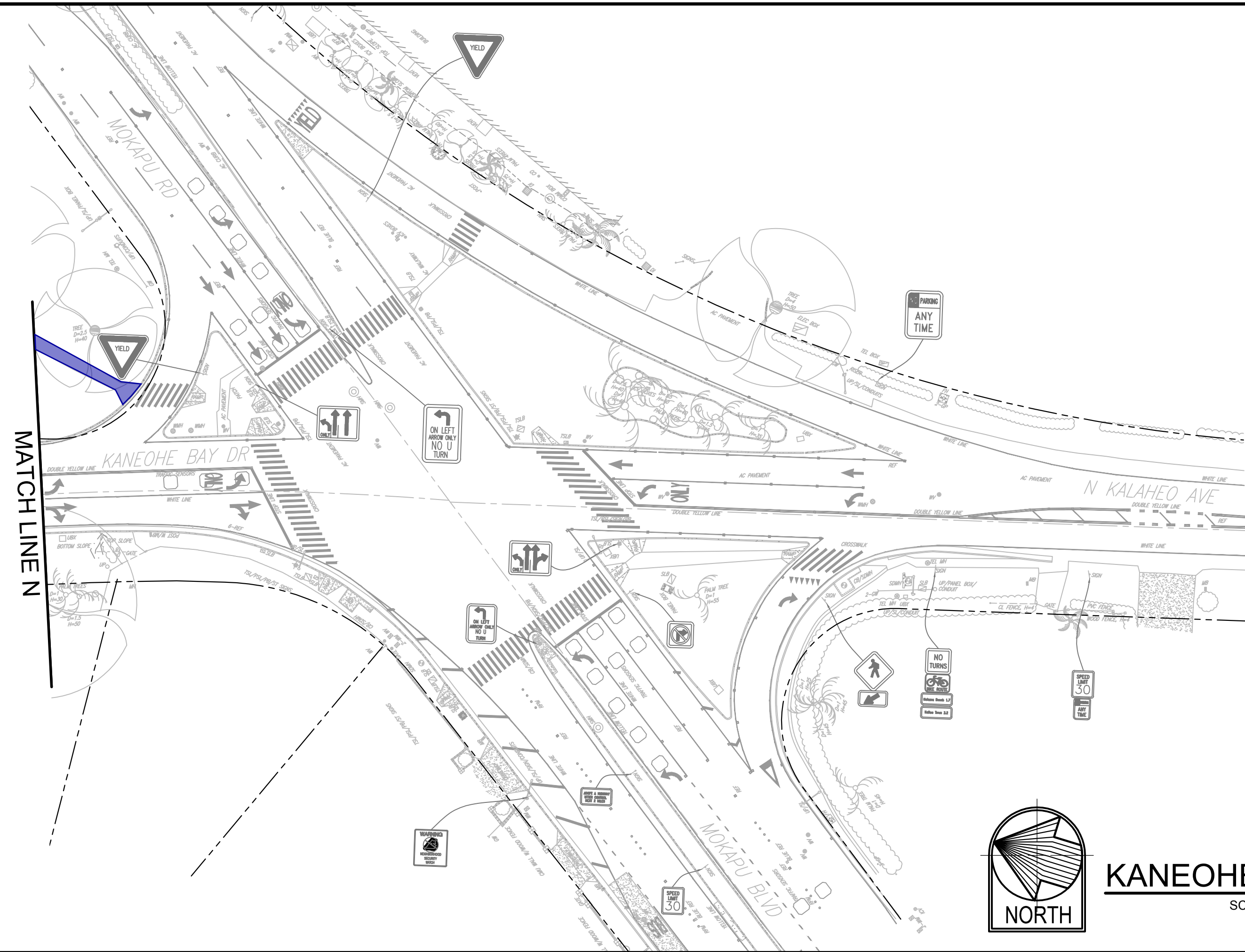
Expiration Date: 4/30/20  
THIS WORK WAS PREPARED BY ME OR UNDER MY SUPERVISION AND CONSTRUCTION OF THIS PROJECT WILL BE UNDER MY OBSERVATION.

C-026

BELT COLLINS HAWAII, LLC

FILE	POCKET	FOLDER	NO.

T:\18\_18\_020 - 11281 - MUDS Campaign Sheets\2017\03\04 - Graphics\CAD\Sheets - Kaneohe\C-026 - KANEOHE BAY DRIVE - 7.dwg



**KANEOHE BAY DRIVE**

SCALE: 1"=40'

**LEGEND**

 Existing Sidewalk

**GRAPHIC SCALE**



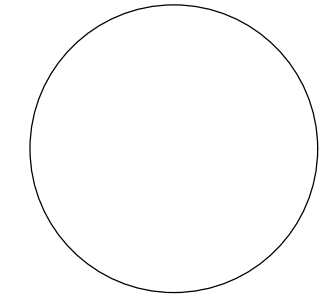
REVISION	DATE	BRIEF DESCRIPTION	BY	APPROVED

DEPARTMENT OF TRANSPORTATION SERVICES  
CITY AND COUNTY OF HONOLULU

COMPLETE STREETS PLANNING  
REHABILITATION OF STREETS UNITS 73A, 73B, AND 73C  
OAHU, HAWAII

**KANEOHE BAY DRIVE - 8**

ENGINEER: LN/JS DATE: October 2019  
 DRAFTSMAN: - SCALE: AS NOTED  
 CHK BY: LN REF: -

  
 Expiration Date: 4/30/20  
 THIS WORK WAS PREPARED BY ME OR  
 UNDER MY SUPERVISION AND  
 CONSTRUCTION OF THIS PROJECT WILL  
 BE UNDER MY OBSERVATION.  
 \_\_\_\_\_  
 BELT COLLINS HAWAII, LLC

**C-027**

FILE	POCKET	FOLDER	NO.