

Honolulu / KAILUA COMPLETE STREETS

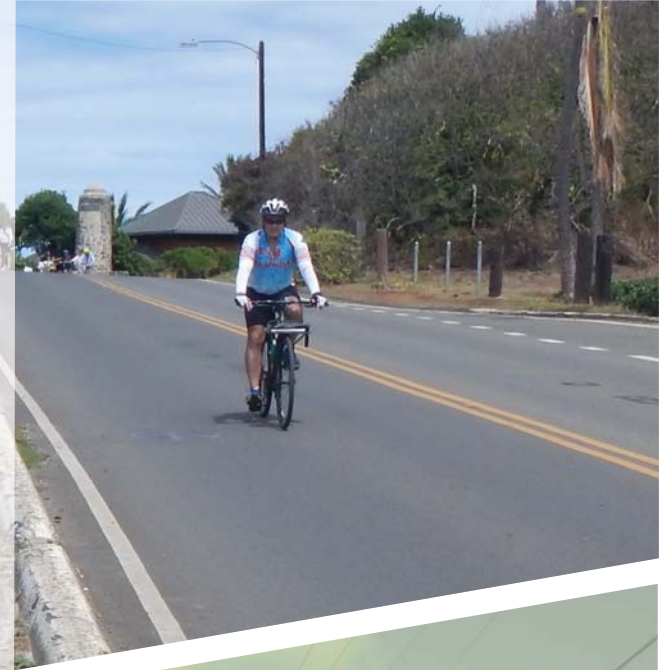


Overview

Complete streets are part of a transportation and design approach that aims to create a comprehensive, integrated network of streets for all people whether traveling by foot, bicycle, transit, or automobile. Complete Streets are:

- Safe and convenient for people of all ages and abilities
- Accommodating to all modes, including foot, bicycle, transit, and automobile
- Integrated with the community's vision and sense of place
- Supportive of community health and transportation equity

The goal of the Kailua project is to find ways to make the area safe, inviting, and usable for all. The project tasks include a multimodal transportation assessment, community engagement, environmental review, and development of conceptual designs that will later be taken into final design and construction. The project team will draw on earlier studies and planning efforts to develop draft designs, and present them to the community for feedback at several stages of the process.



Study Area

The study focuses on Kailua Road, Kalaheo Avenue, Kuulei Road, Mokulua Drive, Oneawa Street, Kihapai Street, and Mokapu Road. Adjacent network roadways including Kainalu Drive and Maluniu Avenue will also be studied. Turn this page to see a project area map.



Community Engagement

We need your input to make sure the project balances the needs of diverse roadway users and supports community character. The project team will consult with community organizations, schools and businesses, and other stakeholders. The community will have an opportunity to share ideas and give feedback in walk workshop events, Neighborhood Board presentations, and later community pop-up events where new design concepts can be reviewed. Comments may be submitted at any time during the process by e-mail to completestreets@honolulu.gov.

We need to hear from YOU –

- How do you get around?
- What makes your neighborhood unique?
- What needs improving?
- What are your suggestions?

Staying Informed

Please sign up for e-mail updates at: www.honolulu.gov/completestreets
News on this Kailua project and the entire Complete Streets initiative will be posted here.

Tasks and Timeline

TASK 1

Data Collection & Multimodal Assessment

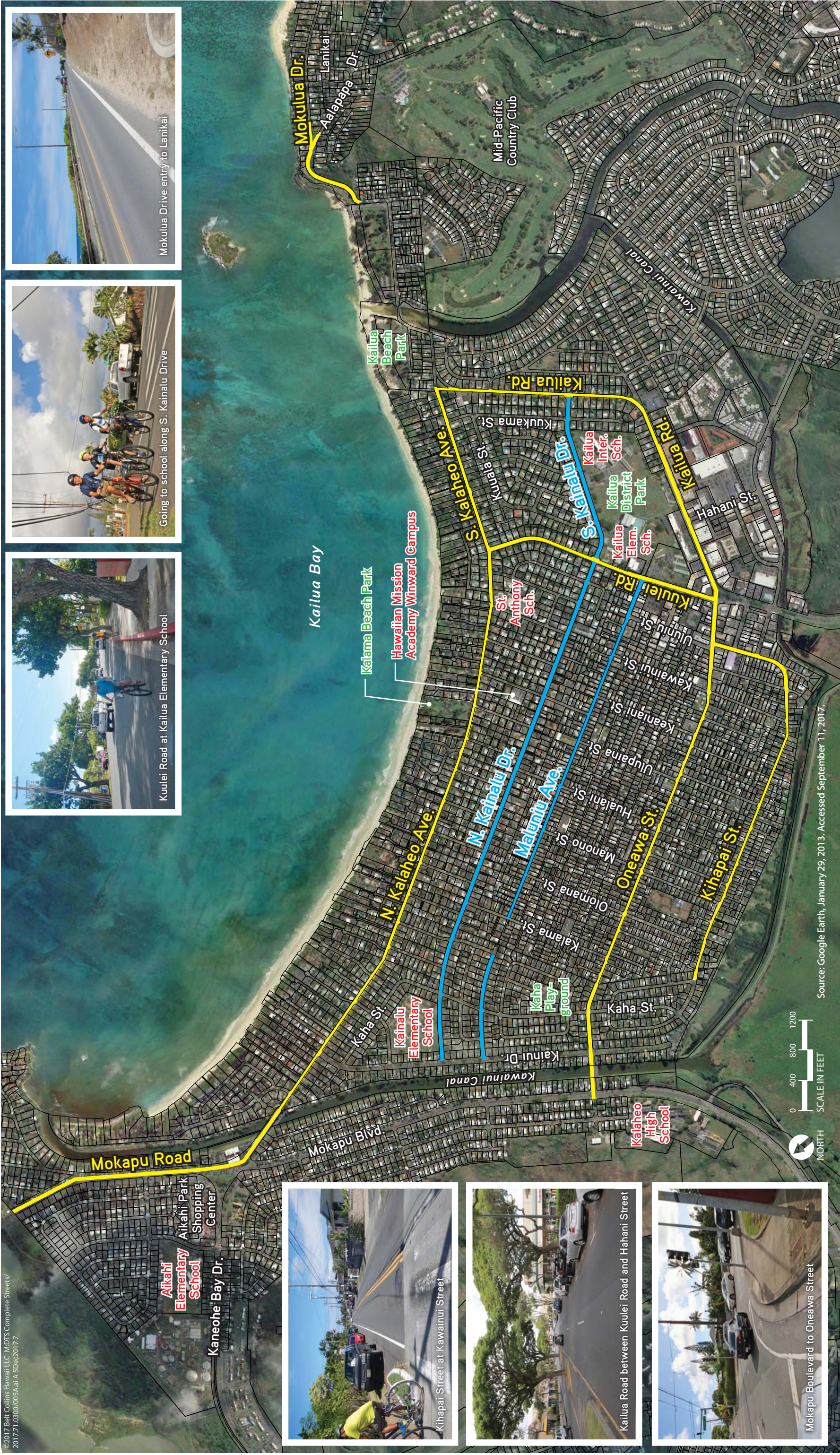
TASK 2

Community Engagement

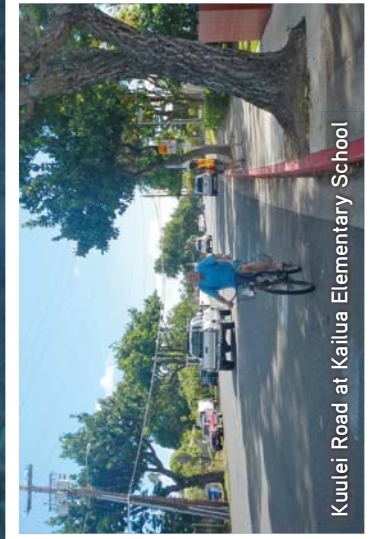
TASK 3

Environmental Review and 30% Design Plans

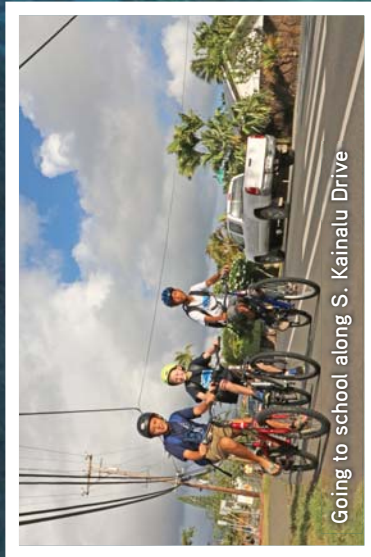
Tasks and Timeline		TASK 1 Data Collection & Multimodal Assessment	TASK 2 Community Engagement	TASK 3 Environmental Review and 30% Design Plans
2017	SEPTEMBER	<ul style="list-style-type: none"> • Data Collection 		
	OCTOBER			
	NOVEMBER			
	DECEMBER			
2018	JANUARY	<ul style="list-style-type: none"> • Draft Multimodal Assessment 	<p><i>Gather Community Input</i></p> <ul style="list-style-type: none"> • Meetings with Elected Officials • Neighborhood Board Presentation 	
	FEBRUARY			
	MARCH			
	APRIL			
	MAY			
	JUNE TO DECEMBER			



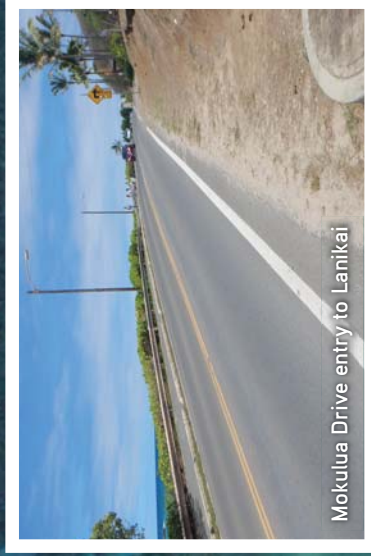
Source: Google Earth, January 29, 2013. Accessed September 11, 2017.



Kuuiei Road at Kailua Elementary School



Going to school along S. Kainalu Drive



Mokulua Drive entry to Lanikai



Kihapai Street at Kawainui Street



Kailua Road between Kuuiei Road and Hahani Street



Mokapu Boulevard to Oneawa Street

LEGEND

- Study Segments
- Alternate Segments

Honolulu COMPLETE STREETS

STUDY AREA

Complete Streets Project: KAILUA

Oahu, Hawaii